



APC MGE Galaxy 3500 15kVA 400V uninterruptible power supply (UPS) 12000 W

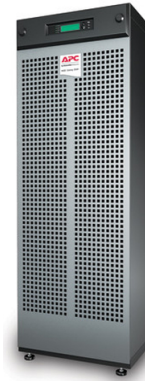
Brand : APC

Product code: G35T15KH4B4S

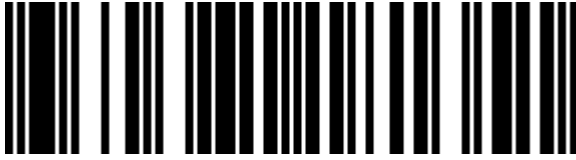
Product name : MGE Galaxy 3500 15kVA 400V

MGE Galaxy 3500 15kVA 400V with 4 Battery Modules, Start-up 5X8

APC MGE Galaxy 3500 15kVA 400V. Output power capacity: 15 kVA, Output power: 12000 W, Input frequency: 40/70 Hz. Battery technology: Sealed Lead Acid (VRLA), Battery recharge time: 5 h. Product colour: Black. Certification: CE,EN 50091-2,EN/IEC 62040-3,EN/IEC 62040-1-1,IEC 61000-3-2,IEC 61000-3-3,ISO 14001,ISO.... Weight: 627 kg



| Features | | Operational conditions | |
|-----------------------------------|-------------------------|---|---|
| Output power capacity * | 15 kVA | Operating altitude | 0 - 999.9 m |
| Output power * | 12000 W | Non-operating altitude | 0 - 15000 m |
| Input frequency * | 40/70 Hz | Certificates | |
| Maximum current | 20 A | CE,EN 50091-2,EN/IEC 62040-3,EN/IEC 62040-1-1,IEC 61000-3-2,IEC 61000-3-3,ISO 14001,ISO 9001,VFI-SS-111 | |
| Emergency Power Off (EPO) | ✓ | Certification | |
| Noise level | 51.3 dB | Weight & dimensions | |
| Battery | | Weight | 627 kg |
| Battery technology | Sealed Lead Acid (VRLA) | Packaging data | |
| Battery recharge time | 5 h | Package weight | 658 kg |
| Replacement battery cartridge | 4 | Logistics data | |
| Design | | Harmonized System (HS) code | 85078000 |
| Product colour * | Black | Other features | |
| Operational conditions | | Battery type | VRLA |
| Operating temperature (T-T) | 0 - 40 °C | Output connections | 1 x 4-wire (3PH + G) 1 x 5-wire (3PH + N + G) 1 x Screw Terminals |
| Storage temperature (T-T) | -15 - 45 °C | Input connection type | 5-wire (3PH + N + G) |
| Operating relative humidity (H-H) | 0 - 95% | Dimensions (WxDxH) | 523 x 838 x 1491 mm |
| Storage relative humidity (H-H) | 0 - 95% | Output voltage note | +/- 5% |
| | | Package dimensions (WxDxH) | 650 x 1062 x 1643 mm |



7330381181351

Disclaimer. The information published here (the "Information") is based on sources that can be considered reliable, typically the manufacturer, but this Information is provided "AS IS" and without guarantee of correctness or completeness. The Information is only indicative and can be changed at any time without notification. No rights can be based on the Information. Suppliers or aggregators of this Information do not accept any liability with regard to the content of (web)pages and other documents, including its Information. The publisher of the Information can not be held liable for the content of 3rd party websites that are linking this Information or are linked to from this Information. You as the User of the Information are solely responsible for the choice and usage of this Information. You are not entitled to transfer, copy or otherwise multiply or distribute the Information. You are obliged to follow the directions of the copyright owner(s) with regard to the use of the Information. Exclusively Dutch law is applicable. With regard to price and stock data on the site, the publisher followed a number of starting points, which are not necessarily relevant for your private or business circumstances. Therefore, the price and stock data are only indicative and are subject to changes. You are personally responsible for the way you use and apply this information. As a user of the Information or sites or documents in which this Information is included, you will adhere to standard fair use including avoidance of spamming, ripping, intellectual-property violations, privacy violations, and any other illegal activity.

Publication date: 01-FEB-2025. Prints or copies of Information are only valid on the printed Publication date