



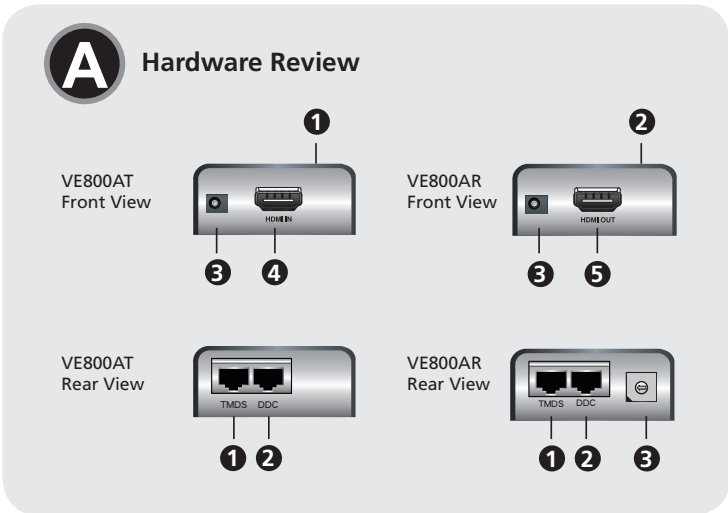
© Copyright 2015 ATEN® International Co., Ltd.  
ATEN and the ATEN logo are trademarks of ATEN International Co., Ltd. All rights reserved. All other trademarks are the property of their respective owners.

This product is RoHS compliant.

Part No. PAPE-1223-C91G      Printing Date: 02/2015



Package Contents	
1 VE800AT HDMI Extender	1 Mounting Kit
1 VE800AR HDMI Extender	1 User Instructions
2 Power Adapters	



## VE800A HDMI Extender Quick Start Guide www.aten.com

### Hardware Review **A**

#### VE800AT / VE800AR Front View

1. Power LED (top cover, VE800AT only)
2. Online/Power LED (top cover, VE800AR only)
3. Power Jack
4. HDMI Input Port (VE800AT)
5. HDMI Output Port (VE800AR)

#### VE800AT/ VE800AR Rear View

1. TMSD Port (Transition-Minimized Differential Signaling)
2. DDC Port
3. EQ Switch (VE800AR only)

### Hardware Installation **B**

1. Use an HDMI cable to connect the HDMI output port on the video source device to the HDMI input port on the VE800AT.
2. Use one Cat 5e cable to connect the TMDS port on the VE800AT to the TMDS port on the VE800AR.

3. (Optional) Use a second Cat 5e cable to connect the DDC port on the VE800AT to the DDC port on the VE800AR
  4. Use an HDMI cable to connect the HDMI input port on the display device to the HDMI output on the VE800AR.
  5. Using the two power adapters supplied with this package, connect the VE800AT and the VE800AR to an AC power outlet.
  6. Turn on the source and display devices.
- Note:** For VE800A, a second Cat 5e cable is required only if you need to use EDID Bypass and HDCP authentication.

### Operation

Picture Adjustment

Use the EQ switch to adjust the equalization strength to improve a blinking image.

The values range from 0-7 where:

- 7: strongest equalization  
0: weakest equalization

## Système d'extension HDMI VE800A - Guide de démarrage rapide www.aten.com

### Description de l'appareil **A**

#### Vue avant du VE800AT / VE800AR

1. Voyant d'alimentation (cache supérieur, VE800AT seulement)
2. Voyant en ligne/d'alimentation (cache supérieur, VE800AR seulement)
3. Prise d'alimentation
4. Port d'entrée HDMI (VE800AT)
5. Port de sortie HDMI (VE800AR)

#### Vue arrière du VE800AT / VE800AR

1. Port TMDS (signalisation différentielle à transition minimisée)
2. Port DDC
3. Bouton EQ (VE800AR uniquement)

### Installation du matériel **B**

1. Utilisez un câble HDMI pour relier le port de sortie HDMI du périphérique d'affichage source au port d'entrée HDMI situé sur l'unité VE800AT.
2. Utilisez un câble de catégorie 5e pour connecter le port TMDS de l'unité VE800AT au port TMDS de l'unité VE800AR.

3. (Facultatif) Utilisez un second câble de catégorie 5e pour connecter le port DDC de l'unité locale VE800AT au port DDC de l'unité VE800AR.
4. Utilisez un câble HDMI pour relier le port d'entrée HDMI du périphérique d'affichage au port de sortie HDMI situé sur l'unité VE800AR.
5. En utilisant les deux adaptateurs secteur fournis dans l'emballage, branchez les unités VE800AT et VE800AR sur une prise de courant.
6. Allumez les périphériques d'affichage et source.

**Remarque** : pour le système VE800A, il ne faut un second câble de catégorie 5e que si vous avez besoin d'utiliser le contournement du mode EDID et l'authentification HDCP.

### Fonctionnement

Réglage de l'image

Utilisez le commutateur EQ pour régler le niveau d'égalisation afin d'améliorer la

qualité d'une image tremblante.

Les valeurs s'étendent de 0 à 7 où :

- 7 : égalisation la plus forte  
0 : égalisation la plus faible

## VE800A HDMI-Verlängerung Kurzanleitung www.aten.com

### Hardwareübersicht **A**

#### VE800AT / VE800AR - Vorderseite

1. LED-Betriebsanzeige (obere Abdeckung, nur beim VE800AT)
2. Online-/LED-Betriebsanzeige (obere Abdeckung, nur beim VE800AR)
3. Stromeingangsbuchse
4. HDMI-Eingang (VE800AT)
5. HDMI-Ausgang (VE800AR)

#### VE800AT / VE800AR - Rückseite

1. TMDS-Port (Transition-Minimized Differential Signaling)
2. DDC-Port
3. EQ-Schalter (nur beim VE800AR)

### Hardware installieren **B**

1. Verbinden Sie den HDMI-Ausgang der Video-Signalquelle mit dem HDMI-Eingang des VE800AT. Verwenden Sie dazu ein HDMI-Kabel.
2. Verbinden Sie den TMDS-Port des VE800AT mit dem TMDS-Port des VE800AR. Verwenden Sie dazu ein Kat. 5e-Kabel.

3. (Optional) Verbinden Sie den DDC-Port des VE800AT mit dem DDC-Port des VE800AR. Verwenden Sie dazu ein zweites Kat. 5e-Kabel.
4. Verbinden Sie den HDMI-Eingang des Video-Anzeigergerätes mit dem HDMI-Ausgang des VE800AR. Verwenden Sie dazu ein HDMI-Kabel.
5. Verbinden Sie den VE800AT und den VE800AR mithilfe der mitgelieferten Netzteile mit einer Steckdose.
6. Schalten Sie die Signalquelle und die Anzeigergeräte ein.

**Hinweis:** Beim VE800A ist ein zweites Kat. 5e-Kabel nur erforderlich, wenn Sie die EDID-Bypass-Funktion und HDCP-Authentifizierung verwenden möchten.

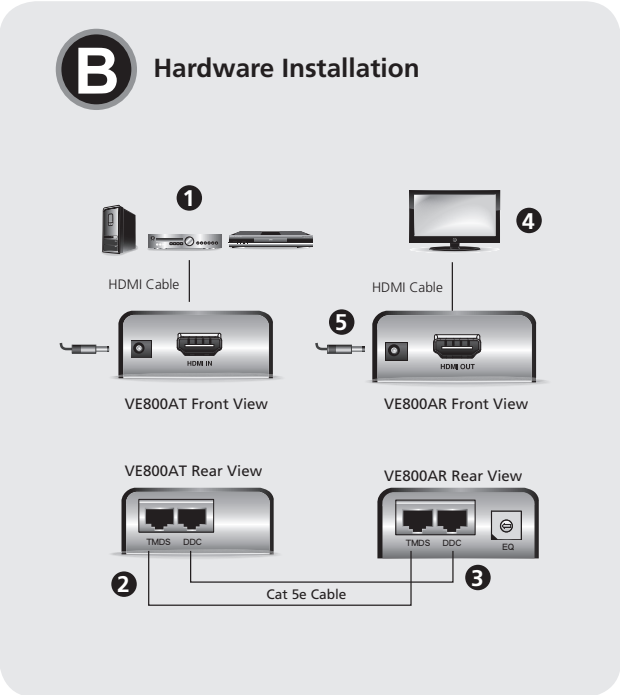
### Bedienung

Bild einstellen

Mit dem EQ-Schalter können Sie die Verstärkung bzw. Dämpfung justieren, um ein flackerndes Bild zu kompensieren.

Die möglichen Werte laufen von 0 bis 7, wobei gilt:

- 7: größte Laufzeitfehlerkorrektur  
0: kleinste Laufzeitfehlerkorrektur



## VE800A Alargador HDMI Guía rápida www.aten.com

### Presentación del hardware **A**

#### VE800AT / VE800AR – Vista frontal

1. Indicador de alimentación (tapa superior, VE800AT únicamente)
2. Indicador en línea/de alimentación (tapa superior, VE800AR únicamente)
3. Entrada de alimentación
4. Puerto de entrada HDMI (VE800AT)
5. Puerto de salida HDMI (VE800AR)

#### VE800AT / VE800AR – Vista posterior

1. Puerto TMDS (Transition-Minimized Differential Signaling)
2. Puerto DDC
3. Conmutador EQ (VE800AR únicamente)

### Instalar el hardware **B**

1. Conecte el puerto de salida HDMI del dispositivo fuente de señal al puerto de entrada HDMI del VE800AT. Para ello, utilice un cable HDMI.
2. Utilice un cable de Cat. 5e para conectar el puerto TMDS del VE800AT al puerto TMDS del VE800AR.

Important Notice			
Considering environmental protection, ATEN does not provide a fully printed user manual for this product. If the information contained in the Quick Start Guide is not enough for you to configure and operate your product, <b>please visit our website <a href="http://www.aten.com">www.aten.com</a>, and download the full user manual.</b>			
<b>Online Registration</b> <a href="http://eservice.aten.com">http://eservice.aten.com</a>	<b>Technical Phone Support</b> International: 886-2-86926959	<b>North America:</b> 1-888-999-ATEN	<b>United Kingdom:</b> 44-8-4481-58923

The following contains information that relates to China:

有毒有害物質或元素				
物料名稱	鉛	汞	六价鉻	多溴联苯
電源插頭	○	○	○	○
電源開關	○	○	○	○

○: 表示該有毒有害物質在該部件所有均質材料中的含量均在SJ/T 11363-2006規定的限量要求之下。  
●: 表示符合歐盟RoHS指令要求, 但該有毒有害物質至少在該部件的某一均質材料中的含量超出SJ/T 11363-2006的限量要求。  
×: 表示該有毒有害物質至少在該部件的某一均質材料中的含量超出SJ/T 11363-2006的限量要求。

### EMC Information

FEDERAL COMMUNICATIONS COMMISSION INTERFERENCE STATEMENT:

This equipment has been tested and found to comply with the limits for a Class A digital device, pursuant to Part 15 of the FCC Rules. These limits are designed to provide reasonable protection against harmful interference when the equipment is operated in a commercial environment. This equipment generates, uses, and can radiate radio frequency energy and, if not installed and used in accordance with the instruction manual, may cause harmful interference to radio communications. Operation of this equipment in a residential area is likely to cause harmful interference in which case the user will be required to correct the interference at his own expense.

**FCC Caution:** Any changes or modifications not expressly approved by the party responsible for compliance could void the user's authority to operate this equipment.

**CE Warning:** This is a class A product. In a domestic environment this product may cause radio interference in which case the user may be required to take adequate measures.

**Suggestion:** Shielded twisted pair (STP) cables must be used with the unit to ensure compliance with FCC & CE standards.

This device complies with Part 15 of the FCC Rules. Operation is subject to the following two conditions:(1) this device may not cause harmful interference, and(2) this device must accept any interference received, including interference that may cause undesired operation.

이 기기는 업무용(A급) 전자파 적합기기로서 판매자 또는 사용자는 이점을 주의하시기 바라며, 가정외의 지역에서 사용하는 것을 목적으로 합니다.

All information, documentation, firmware, software utilities, and specifications contained in this package are subject to change without prior notification by the manufacturer. Please visit our website <http://www.aten.com/download/?cid=dds> for the most up-to-date versions.

## Estensore HDMI VE800A - Guida rapida www.aten.com

### Hardware **A**

#### Vista anteriore del VE800AT/VE800AR

1. LED di accensione (coperchio superiore, solo VE800AT)
2. LED di accensione/online (coperchio superiore, solo VE800AR)
3. Presa d'alimentazione
4. Porta d'ingresso HDMI (VE800AT)
5. Porta d'ingresso HDMI (VE800AR)

#### Vista posteriore del VE800AT/VE800AR

1. Porta TMDS (Transition-Minimized Differential Signaling)
2. Porta DDC
3. Selettore EQ (solo VE800AR)

### Installazione dell'hardware **B**

1. Utilizzare un cavo HDMI per collegare la porta di uscita HDMI del dispositivo sorgente video alla porta di ingresso HDMI del VE800AT.
2. Utilizzare un cavo Cat 5e per connettere la porta TMDS del VE800AT alla porta TMDS del VE800AR.

## Краткое руководство пользователя HDMI-удлинителя VE800A www.aten.com

### Обзор оборудования **A**

#### Вид спереди VE800AT/VE800AR

1. Индикатор питания (верхняя крышка, только VE800AT)
2. Индикатор онлайн/питания (верхняя крышка, только VE800AR)
3. Гнездо питания
4. Вход HDMI (VE800AT)
5. Выход HDMI (VE800AR)

#### Вид сзади VE800AT/VE800AR

1. Порт TMDS (дифференциальная передача сигналов с минимизацией перепадов уровней)
2. Порт DDC
3. Переключатель EQ (только VE800AR)

### Установка оборудования **B**

1. Используя кабель HDMI, подключите выход HDMI источника видео к входу HDMI устройства VE800AT.
2. Используя один кабель Cat 5e, подключите порт TMDS устройства VE800AT к порту TMDS устройства VE800AR.

## VE800A Alargador HDMI Guía rápida www.aten.com

3. (Opcional) Utilice un segundo cable de Cat. 5e para conectar el puerto DDC del VE800AT al puerto DDC del VE800AR.
4. Conecte el puerto de entrada HDMI del dispositivo de visualización al puerto de salida HDMI del VE800AR. Para ello, utilice un cable HDMI.
5. Conecte el VE800AT y el VE800AR a una toma eléctrica mediante los dos adaptadores de alimentación incluidos.
6. Encienda los dispositivos de visualización y fuente.

**Nota:** Para el VE800A solo se requiere un segundo cable de Cat. 5e si desea utilizar las funciones de Bypass EDID y de autenticación HDCP.

### Funcionamiento

Ajustar la imagen

Utilice el botón EQ para ajustar el nivel de equalización con el fin de mejorar la calidad de una imagen intermitente.

El rango de valores permitidos comprende del 0 al 7, siendo:

- 7: mayor compensación  
0: menor compensación

## Estensore HDMI VE800A - Guida rapida www.aten.com

3. (Opzionale) Utilizzare un secondo cavo Cat 5e per connettere la porta DDC del VE800AT alla porta DDC del VE800AR.
4. Utilizzare un cavo HDMI per collegare la porta di ingresso HDMI del dispositivo di visualizzazione alla porta di uscita HDMI del VE800AR.
5. Utilizzare gli alimentatori in dotazione per connettere il VE800AT e il VE800AR ad una presa di corrente CA.
6. Accendere i dispositivi sorgente e di visualizzazione.

**Nota:** per il VE800A è necessario un secondo cavo Cat 5e soltanto se si utilizzano EDID Bypass e l'autenticazione HDCP.

### Funzionamento

Regolazione dell'immagine

Utilizzare il cursore EQ per regolare la potenza di equalizzazione per migliorare un'immagine che lampeggia.

I valori vanno a 0 a 7, dove:

- 7: equalizzazione più potente  
0: equalizzazione più debole

## Краткое руководство пользователя HDMI-удлинителя VE800A www.aten.com

3. (Дополнительно) Используя второй кабель Cat 5e, чтобы подключите порт DDC устройства VE800AT к порту DDC устройства VE800AR.
4. Используя кабель HDMI, подключите вход HDMI устройства отображения к выходу HDMI устройства VE800AR.
5. Используя два адаптера питания из комплекта поставки, подключите VE800AT и VE800AR к сетевой розетке.
6. Включите источник и устройства отображения.

**Примечание.** При работе с устройством VE800A второй кабель Cat 5e подключается только тогда, когда требуется использование функции обхода EDID и аутентификации HDCP.

### Работа

Настройка изображения

Переключатель EQ используется для задания уровня коррекции, устраняя проблемы с миганием изображения.

Используется диапазон значений 0-7, где:

- 7: самый высокий уровень коррекции  
0: самый низкий уровень коррекции

