

A solid green vertical bar is located on the left side of the page, extending from the top of the main text area down to the bottom of the product information section.

User Manual

Portable Laptop Console Crash Cart Adapter

GUC211V

PART NO. M1458

Table of Contents

Package Contents	4
Overview	4
System Requirements	4
Operating Systems	5
Features	5
Overview	6
Hardware Installation	7
Operation	8
Remote Desktop Toolbar	10
Settings	11
Hotkeys and Macros	12
Search	19
Video Settings	20
Mounting Virtual Media	22
Zoom	22
Virtual Media	22
On-Screen Keyboard	26
Mouse Pointer	27
Mouse Sync Mode	27
Configure Panel	28
Firmware Upgrade	29
VSR Viewer	32
Compliance Information	36
Limited Warranty	37

Package Contents

IOGEAR's GUC211V Portable Laptop Console Crash Cart Adapter package contains the following items:

- 1 x GUC211V
- 1 x USB Type-A to USB Mini-B Cable
- 1 x QSG

Overview

IOGEAR's GUC211V Portable Laptop Console Crash Cart Adapter provides a direct Laptop-to-Computer connection with instant desktop access. Through the built-in USB 2.0 and VGA cables, the GUC211V gives direct access, bi-directional file transfer, video recording, and image capture from the connected computer or kiosk. True Plug-N-Play: simply connect the cables between the laptop and the target computer for fast and easy remote desktop access.

In addition to offering simple Plug-N-Play desktop KVM (keyboard, video, mouse) access to servers, IOGEAR's GUC211V also allows you to transfer files between the computers using an innovative virtual media function through IOGEAR's intuitive GUI (graphical user interface).

IOGEAR's GUI console application can be run from the GUC211V or copied on to and run from the laptop to provide access to the target computer. The console window can be adjusted to fit the size and resolution of the target computer's desktop by resizing the panel automatically. This feature allows you to view the entire desktop of the target computer without the need to use a scroll bar. IOGEAR's Portable Laptop Console Crash Cart Adapter provides IT professionals with an effective hardware-based access tool that offers direct Laptop-to-Computer desktop control at any target computer's location.

System Requirements

- A laptop with a USB Type-A port
- A target computer / kiosk / server with a USB Type-A and VGA ports

Note:

1. IOGEAR's GUC211V only controls the target computer through a direct cable connection. This crash cart adapter cannot be used to control two standalone PCs as it only provides one-to-one access.
2. User must know login credentials of the target computer if it is part of the target computer's system requirement.

Operating Systems

Windows® 2000, Windows® Vista, Windows® 8, Windows® 10, Windows® 10.1

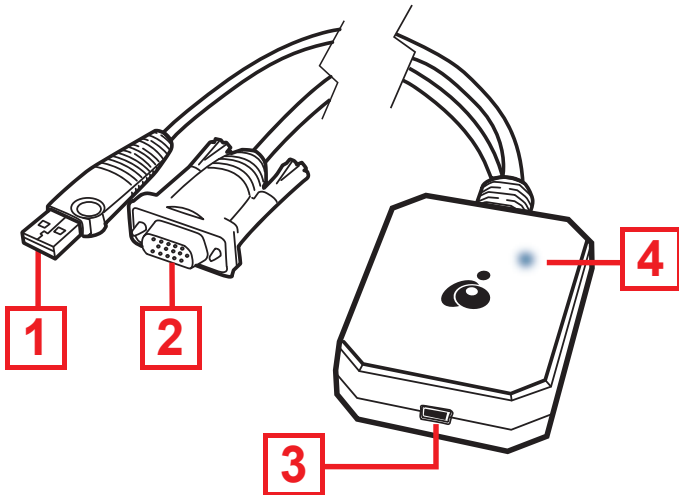
Features

- Provides direct Laptop-to-Computer desktop access
- Programmable macros and hotkeys
- Plug-N-Play - No additional software needed
- Bi-directional file transfer between connected laptop and computer
- Access laptop applications in virtual window without switching windows
- VGA - resolutions up to 1920x1200 @60Hz
- Perform OS patching, software installation and diagnostic testing on remote computer
- Video recording and capture of remote computer*
- Mouse DynaSync™ - automatically synchronizes the laptop and connected computer's mouse movements
- On-screen virtual keyboard with multi-language support
- Supports Windows® 2000, Window Vista®, Windows® 7, Windows® 8, Windows® 8.1, Windows® 10, Windows® 10.1
- Adjust remote computer virtual window resolution
- Hot-Pluggable
- Firmware upgradable

*Requires Java application v1.7.0_75 or later ready from laptop for video recording playback

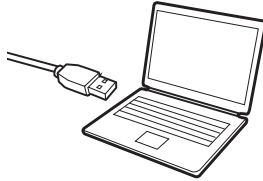
Overview

No.	Component	Description
1	USB Type-A Connector	Connect to the USB 2.0 Port on the target computer to provide keyboard, mouse and virtual media access.
2	VGA Connector	Connect to the VGA port on the target computer to provide video signals.
3	Mini USB Port	Connect the provided USB Type Mini-B end to this port and connect the USB Type-A end to the laptop.
4	Connection LED	Solid blue - the USB connection between the laptop and the target computer is established. Flashes blue – the laptop is accessing the target computer through a remote client session.

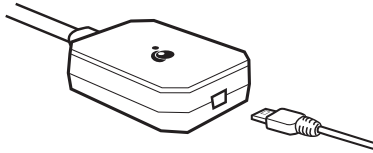


Hardware Installation

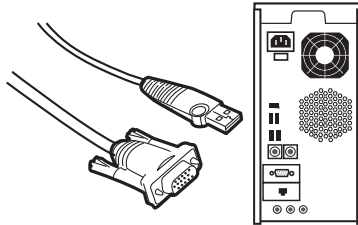
1. Connect the USB Type-A end of the USB Type-A to USB Mini-B Cable (included in this package) to the USB 2.0 port on the laptop.



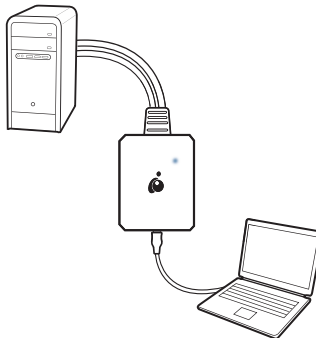
2. Connect the USB Mini-B end of the USB Type-A to USB Mini-B Cable (included in this package) to the Mini USB port on the GUC211V



3. Connect the built-in VGA and USB Type-A connector from the GUC211V to a USB 2.0 port on the target computer or kiosk or server.



4. When the connection between the target computer and the laptop is established, the LED on the GUC211V will light blue.



Operation

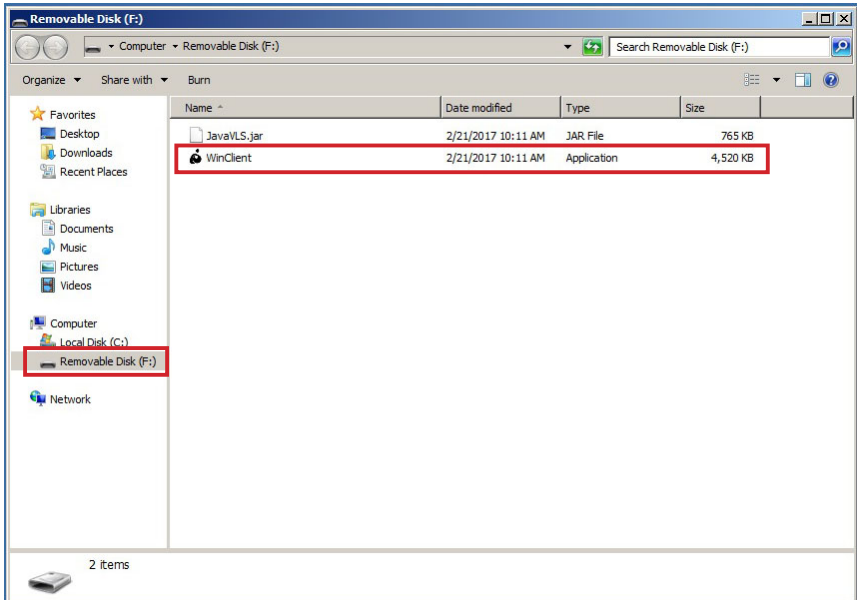
To establish a remote session from the connected laptop, please follow below steps:

1. Connect the GUC211V from the laptop to the target computer or server or kiosk.
2. After the GUC211V is connected to the target computer and laptop, a new Removable Disk drive will install on the laptop.

Note:

If the Removable Disk does not install, please check the cable connection between the GUC211V, connected laptop, and target computer.

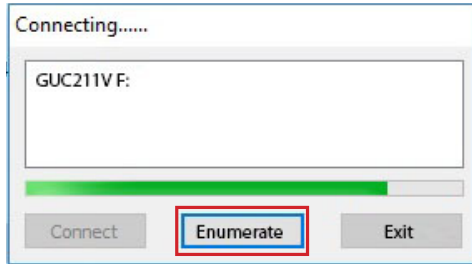
3. Open File Explorer window and click on the Removable Disk.
4. Run the **WinClient.exe** by double clicking the executable file.



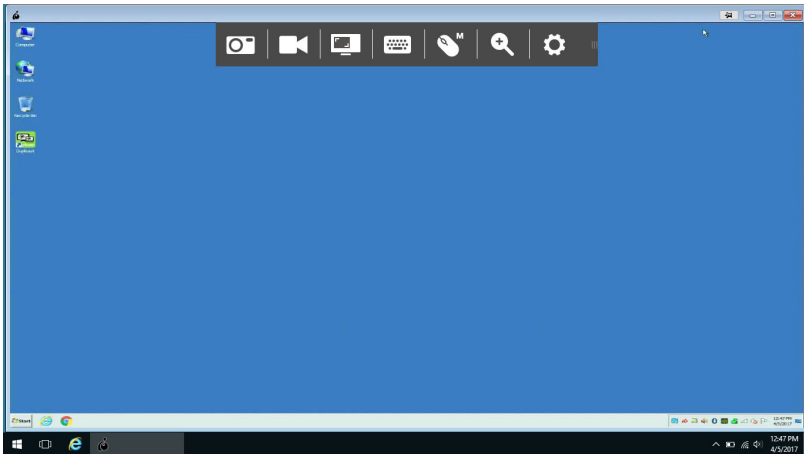
5. When WinClient opens, it will search for the target computer and open a remote session once a connection is established.

Note:

If the Client AP cannot connect to the target computer, please check the cable connections and click Enumerate.



6. Once connection is established, a remote desktop window of the target computer appears.



Remote Desktop Toolbar

GUC211V's WinClient interface provides a convenient remote desktop toolbar which is hidden at top center of the remote desktop window. Drag mouse over the top center to open the Toolbar.



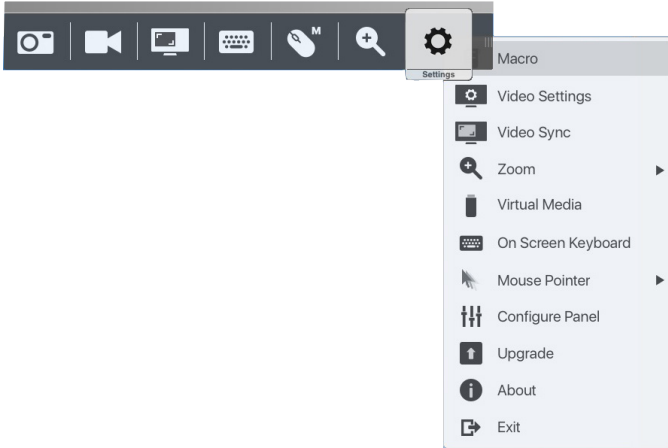
Toolbar can also be moved to a different location:

1. Place the mouse pointer over the Toolbar.
2. Click and drag the Toolbar to a desired location.

#	Icon	Description
1	Screen Capture	Click icon to take a snapshot (screen capture) of the target computer's display (see Configure Panel for more details)
2	Video Capture*	Click icon to start recording a video of the target computer's display. Click icon again to stop recording video. The video is saved on the laptop's desktop by default. You may change the Save to path in the Configure Panel (see Configure Panel for more details). *To play video files, Java app needed to be installed on laptop, see VSR Viewer
3	Video Sync	Click icon to have the vertical and horizontal offset values of the target computer's screen detected and automatically synchronized with the laptop's screen.
4	On-Screen Keyboard	Click icon to open the on-screen keyboard (see On-Screen Keyboard for more details) Note: Ctrl + Alt + Del configuration for the laptop has already been implemented onto the Remote Desktop Toolbar, this allows for call out Ctrl+Alt+Del function on the laptop Alt + Tab configuration for the laptop has already been implemented onto the Remote Desktop Toolbar, this allows for switching screens on the laptop Ctrl + Esc configuration for the laptop has already been implemented onto the Remote Desktop Toolbar, this allows to close GUC211V connection and return to laptop
5	Mouse Sync Mode	Click icon to toggle between Automatic or Manual mouse sync modes. See Mouse Sync Mode for more details. A – Automatic mode is selected M – Manual mode is selected Note: If mouse pointer appear to be stuck in the remote desktop window, press [F4][F5] from the laptop keyboard to show local cursor
6	Zoom	Click icon to adjust remote display window size (25%, 50%, 75%, 100%, 1:1, and Full Screen) See Zoom for more details
7	Settings	Click icon to open extended menu-style version of the Remote Desktop Toolbar. See Settings for more details

Settings

When clicking the last icon on the far right, it brings up a menu-style version of the Remote Desktop Toolbar, allowing you to select additional options, shown below:

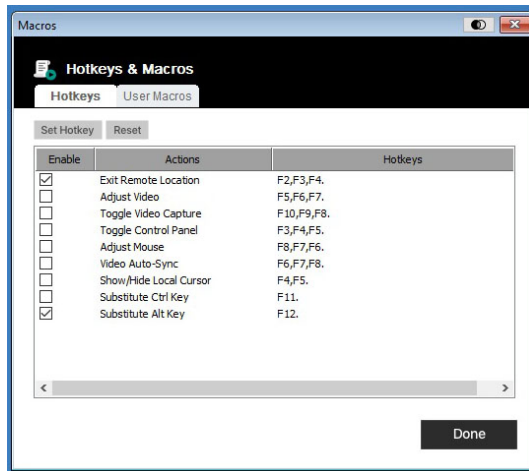


Icon	Function
	Click icon to bring up the Hotkeys & Macros dialog box (see Hotkeys & Macros)
	Click icon to bring up the Video Options dialog box (see Video Settings)
	Click icon to perform a video auto-sync operation. This feature is the same with clicking the Auto-Sync button in the Video Options dialog (see Video Settings)
	Click icon to zoom in and out the Remote Display Window (see Zoom) Note: This feature is only available in windowed mode. This feature is not available in Full Screen Mode
	Click icon to bring up the Virtual Media dialog box (see Virtual Media)
	Click icon to bring up the On-Screen Keyboard (see On-Screen Keyboard)
	Click icon to select mouse pointer style. Note: This icon changes depending on which mouse pointer type is selected (see Mouse Pointer)
	Click icon to bring up the Configure Panel dialog box (see Configure Panel)
	Click icon to bring up the Firmware Upgrade dialog box (see Firmware Upgrade)
	Provides firmware version and information of the GUC211V
	Click icon to exit the viewer. Exiting from a WinClient AP session closes the Remote Desktop Window

Hotkeys

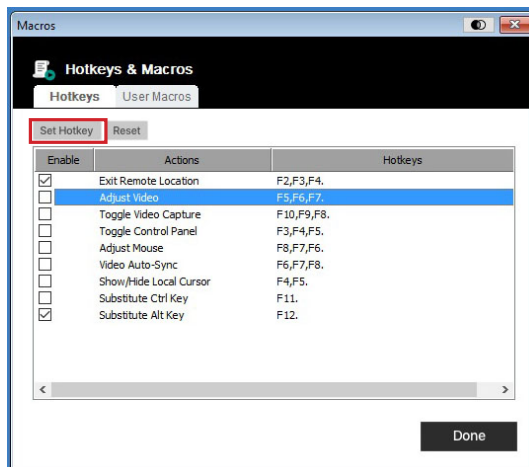
Hotkeys or keyboard shortcuts enable user to designate a specific key combination to trigger an action. The **Hotkeys** tab allows user to configure which hotkey performs specific actions on the target computer.

The hotkeys that invoke an action are shown to the right of its name. Use the checkbox to the left of an action's name to enable or disable its hotkey.

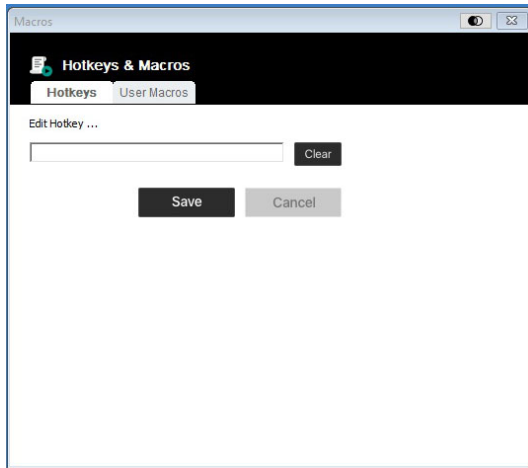


To change hotkey combination for an action, please follow below steps:

1. Highlight the hotkey combination, then click **Set Hotkey**.



2. Press your selected Function keys one at a time. The selected keys appear in the **Edit Hotkey** field as you enter press them one at a time.



- a. You may use the same Function keys for more than one action, as long as the key sequence is not the same.
 - b. To cancel the setting of a hotkey value, click **Cancel**. To clear an action's Hotkeys field, click **Clear**.
3. When you have finished keying in your Function key sequence, click **Save**.
 4. To reset all of the hotkeys to their default values, click **Reset**.

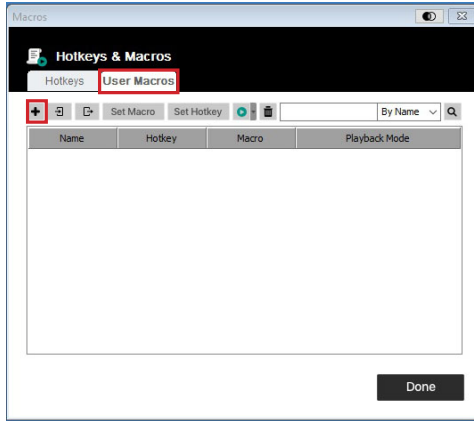
A more detailed explanation of the Hotkey actions is given in the table below.

Action	Explanation
Exit Remote Location	Breaks the connection from the GUC211V and returns to local client computer operation. This is equivalent to clicking the Exit icon on the Remote Desktop Toolbar. Default keys are F2, F3, F4
Adjust Video	Brings up the Video Settings dialog box. This is equivalent to clicking the Video Settings icon on the Remote Desktop Toolbar. Default keys are F5, F6, F7
Toggle Video Capture	Toggles the Video Capture feature to start and stop recording a video of the remote display. Default keys are F10, F9, F8
Toggle Remote Desktop Toolbar	Toggles the Remote Desktop Toolbar Off and On Default keys are F3, F4, F5
Adjust Mouse	This synchronizes the laptop and connected computer's mouse movements. Default keys are F8, F7, F6
Video Auto-Sync	This combination performs an auto-sync operation. This is equivalent to clicking the Video Sync icon on the Remote Desktop Toolbar. Default keys are F6, F7, F8
Show/Hide Local Cursor	Toggles Off and On: Hides local cursor and locks the mouse pointer and keyboard use within WinClient AP window. Also hides the Remote Desktop Toolbar. This is equivalent to selecting the Single pointer type from the Mouse Pointer icon on the Remote Desktop Toolbar Settings menu Default keys are F4, F5
Substitute Ctrl Key	If your laptop captures Ctrl key combinations, then you need to specify a substitute key for the Ctrl key. This will prevent Ctrl key combinations from laptop to be sent to the connected computer. For example, substituting the F11 key for Ctrl key. Pressing [F11 + 5] would appear to the connected computer as [Ctrl + 5] Default key would be F11 Note: Ctrl + Alt + Del configuration for the laptop has already been implemented onto the Remote Desktop Toolbar under On-Screen Keyboard
Substitute Alt Key	To prevent Alt key combination from laptop to be sent to the connected computer, another key may be substituted for the Alt key. For example, substituting the F12 key for Alt key. Pressing [F12 + Tab] would appear to the connected computer as [Alt + Tab]. Default key would be F12 Note: Alt + Tab configuration for the laptop has already been implemented onto the Remote Desktop Toolbar under On-Screen Keyboard

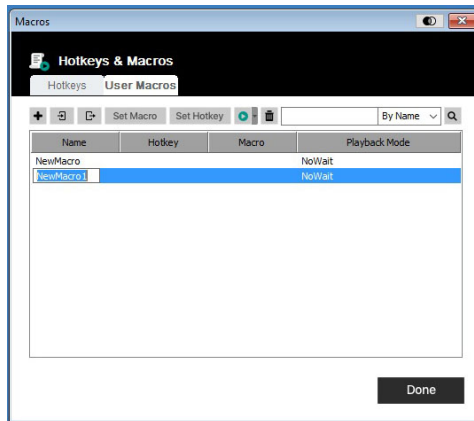
User Macros

Create User Macros to perform specific actions on the target computer by following below steps:

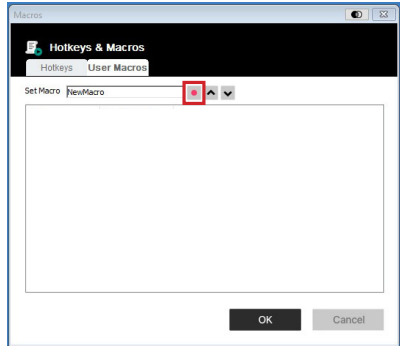
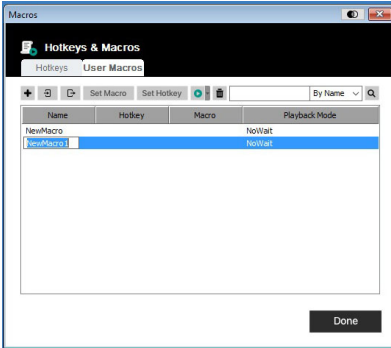
1. Select **User Macros**, then click **+**.



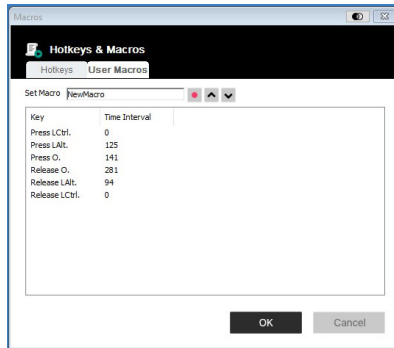
2. In the dialog box, replace the “New Macro” text with a name of our choice for the macro.



3. Click Set Macro, and then click **Record** button.



4. Press the keys for macro

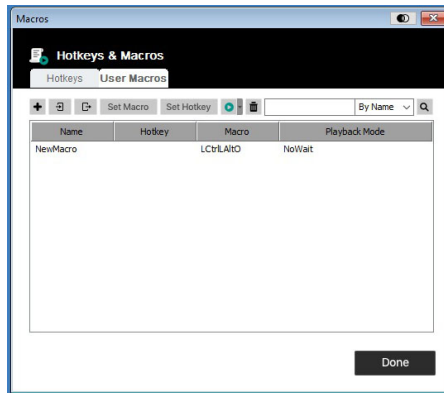


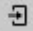

a. To minimize dialog box, click **Minimize**. Dialog box will disappear and a small panel appears at top left of the screen.



- b. To pause macro recording, click **Pause**
- c. To resume macro recording, click **Resume**
- d. To stop macro recording, click **Stop**
- e. When recording macro, focus must be on the remote screen and cannot be in the macro dialog box.
- f. To return to macro dialog box, click **Show Detail**

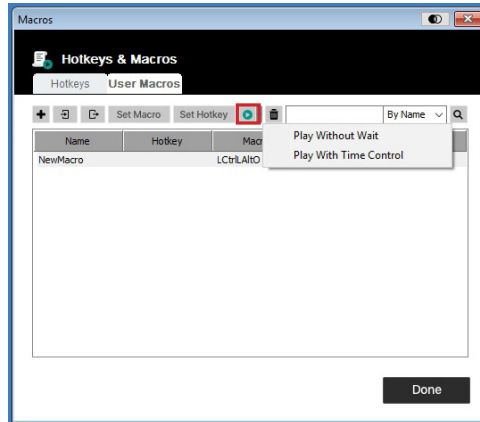
5. If **Minimize** dialog has not been brought up, click **OK** after finished with macro recording. You may return to the **Macros** dialog box with your system macro key presses displayed in the **Macro** column.



- 6. Select a macro and click **Set Hotkey** to create a hotkey combination that executes the macro.
- 7. To change any of the keystrokes, select the macro and click **Set Macro**. This brings up a dialog box for you to change the content of the keystrokes (keys, changing their order, etc.)
- 8. Repeat 1 – 6 to create any other macros
- 9. The complete macro list can be imported and exported by clicking “” “” on **Hotkeys & Macros**

After macros created, it can be run in two ways:

1. By using the **Hotkey** (if one was assigned)
2. By opening the Macros dialog box and click **Play**.

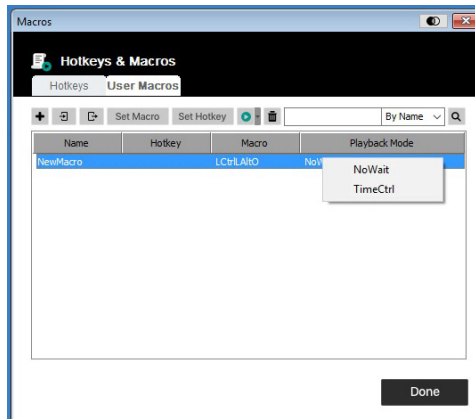


When running macro from this dialog box, there are 2 options:

If **Play Without Wait** is chosen, then the macro runs the key presses one after another with no time delay between them

If **Play With Time Control** is chosen, then the macros waits for the actual amount of time between key presses when created. Click on the arrow next to Play to make your choice

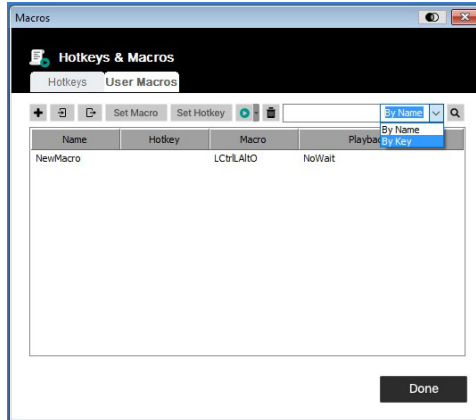
If **Play** is chosen without opening the play option list, then the macro runs with the default choice (**NoWait** or **TimeCtrl**), shown in the **Playback** column



Default choice can be changed by clicking on the current choice and select the alternate choice

Search

Search, at the top of the dialog box, allows you to filter the list of macros that appear in the large lower panel for you to lay or edit.



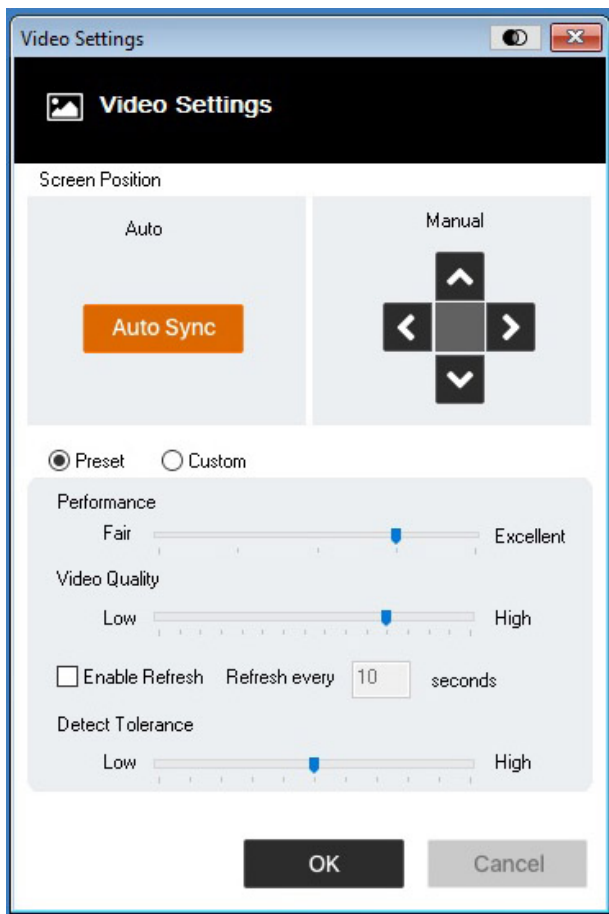
Click the drop-down menu to choose whether you want to search by name or by key; key in a string for the search; then, click **Search**. All instances that match your search string will appear in the upper panel.

Note:

User Macros are stored on the Local Client computer. Therefore, there is no limitation on the number of macros, the size of the macro names, or makeup of the hotkey combinations that invoke them

Video Settings

The options in the video settings dialog box enables users to adjust the Screen Position, slide bar settings (Performance, Video Quality, Detect Tolerance) and Refresh settings, as shown below:



Options	Usage
Manual	Adjust the horizontal and vertical position of the connected computer's window by clicking the Arrow buttons
Auto-Sync	<p>Click Auto-Sync to have the vertical and horizontal offset values of the remote screen detected and automatically synchronized with the local screen.</p> <p>Note:</p> <ol style="list-style-type: none"> 1. If the laptop and the connected computer's mouse pointers are out of sync, in most cases, performing this function will bring them back in sync 2. This function works best with a bright screen 3. Use the Screen Position arrows to position the remote display manually if preferred
Performance	The GUC211V will use this selection to automatically adjust the Video Quality settings, optimizing the quality of the video display or performance
Video Quality	Click and drag the slide bar to adjust the overall Video Quality. The larger the value, the clearer the picture because the more video data is transmitted
Enable Refresh	<p>The GUC211V can redraw the screen every 1 to 99 seconds, eliminating unwanted artifacts from the screen.</p> <p>Select Enable Refresh and enter a number from 1 through 99, the GUC211V will then redraw the screen at the interval you specify. This feature is disabled by default. Click to put a check mark in the box next to Enable Refresh to enable this feature.</p> <p>Note:</p> <ol style="list-style-type: none"> 1. The switch starts counting the time interval when mouse movement stops 2. Enabling this feature increases the volume of video data transmitted. The lower the number, the more often the video data is transmitted. Setting too low a value may adversely affect overall operating responsiveness.
Detect Tolerance	This setting also relates to video quality. It governs detecting or ignoring pixel changes. A high setting can result in a lower quality display due to less data transfer. A lower setting will result in better video quality, but setting the threshold too low may allow too much data to be transferred, negatively impacting overall performance.

Controls Zoom factor for the target computer's console windows.

Setting	Description
25%	Sizes and displays the remove view window at 25%
50%	Sizes and displays the remove view window at 50%
75%	Sizes and displays the remove view window at 75%
100%	Sizes and displays the remove view window at 100%
1:1	Sizes and displays the target computer's desktop view window at 100%. The difference between this setting and the 100% setting is that when the target computer's windows is resized, its contents do not resize – they remain at the size they were. To see any objects that are outside of the viewing area, move the mouse to the window edge to have the screen scroll
Full Screen	Sizes and displays the connected computer's window at full screen. To exit, click Full Screen a second time

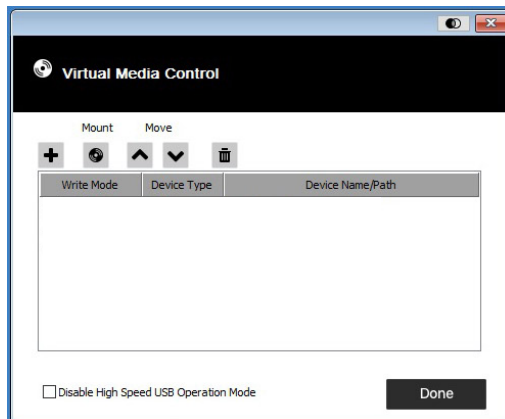
Virtual Media

Virtual Media allows a drive, ISO file, folder, removable disk, or smart card reader on a user's system to appear and act as if it were installed on the target computer.

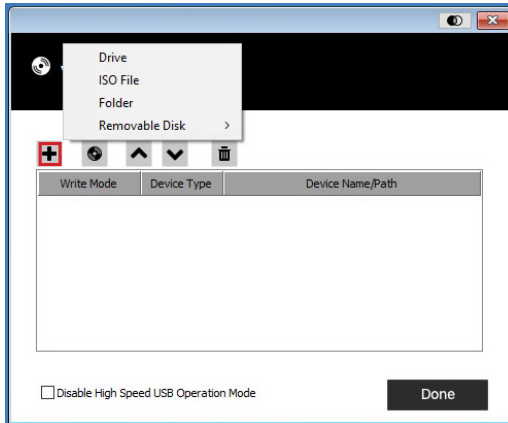
Mounting Virtual Media

To mount a virtual media device, follow below steps:

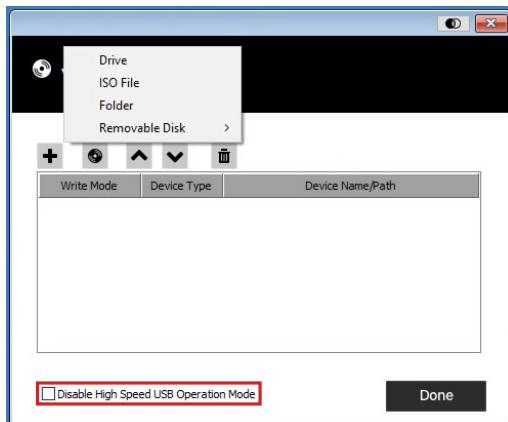
1. Click the Virtual Media icon to bring up the **Virtual Media Control** dialog box without texts



2. Click “+”, then select media source to be added. Depending on the selection, additional dialog box appear to enable user to select the desired Drive, ISO File, Folder, or Removable Disk.

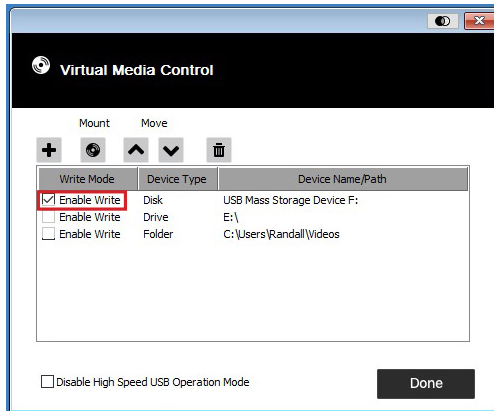



3. If the device only supports full speed USB, please check the Disable High Speed USB Operation Mode box.



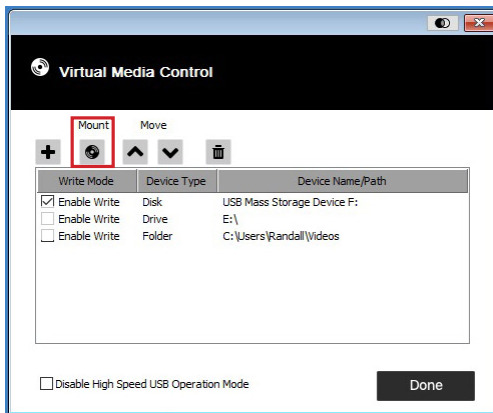
4. To add additional media sources click “+”, and select up to three virtual media choices. The top three in the list are the ones that are selected. Virtual Media and Smart Card readers can be mounted at the same time. To rearrange the selection order, highlight the device you would like to move, then click the “^” or “v” Arrow button.

5. Read refers to the directed device being able to send data to the target computer
Write refers to the redirected device being able to have data form the target computer written to it. For the redirected device to be writeable as well as readable, check the **Enable Write** box.

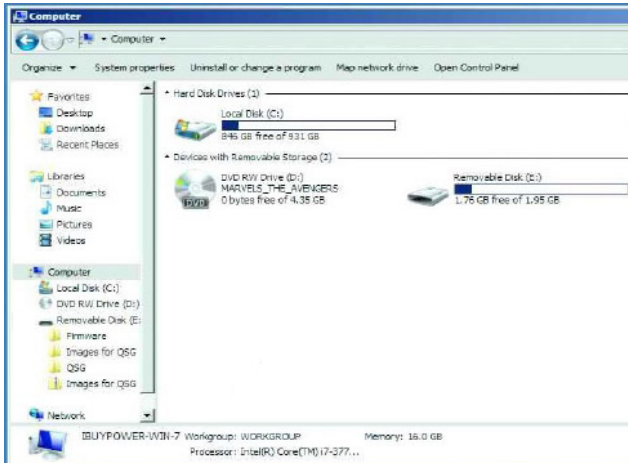


6. To remove a device from the list, select the device and click “”

7. After media sources selected, click **Mount**, then the dialog box closes.



8. The selected virtual media devices are now redirected to the target computer where they show up as drives, files, folders, etc. on the target computer's file system.

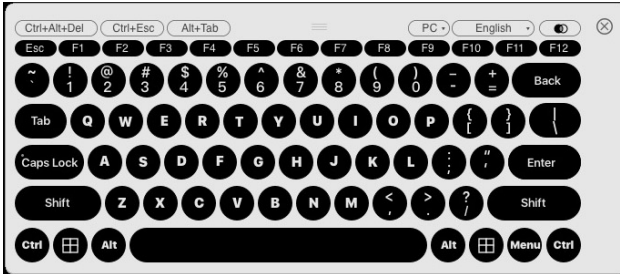


9. Once mounted, the virtual media can be treated as if they really existed on the target computer. This enables user to transfer files bi-directionally between the laptop and the connected computer. You may drag and drop files to/from them. You may also open files on the target computer for editing and then save them onto the redirected media, etc. Files saved to the redirected media will actually be saved on the laptop storage. Files dragged from the redirected media will actually come from laptop storage as well.
10. To end the redirection, bring up the Remote Desktop Toolbar and click on the Virtual Media icon. Then, all mounted devices are automatically unmounted.



On-Screen Keyboard

IOGEAR's GUC211V supports on-screen keyboard in multiple languages, with all the standard keys for each supported language. Click this icon to open the on-screen keyboard.



One of the advantages of the on-screen keyboard is that if the keyboard languages of the target computer and laptop's are not the same, then, there is no need to change settings of either system. Simply bring up the on-screen keyboard, selected the preferred language, and use the on-screen keyboard to type with.

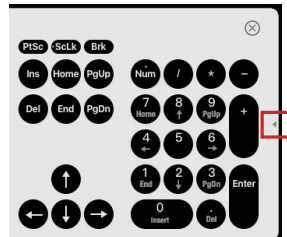
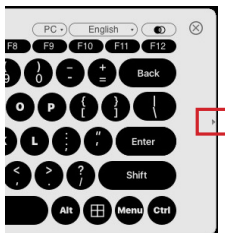


Note:

Use mouse to click on the keys as the physical keyboard will not apply on the on-screen keyboard.

Expanded Keyboard

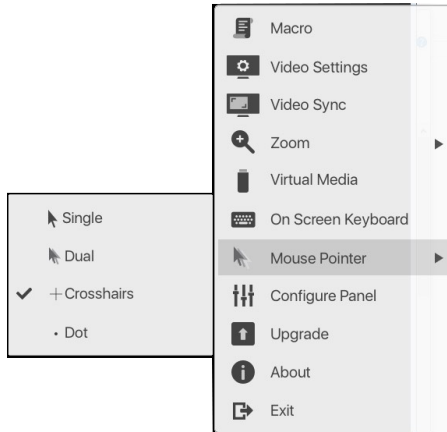
To display or hide the expanded keyboard keys, click the arrow on the right side of the keyboard





Mouse Pointer

GUCS211V offers a number of mouse pointer options when working in the target computer's display.



Note:

Selecting the Dot pointer has the same effect as the Toggle mouse display hotkey function.



Mouse Sync Mode

Synchronization of the laptop and target computer mouse pointers can be accomplished automatically and/or manually.

Automatic Mouse Synchronization

Mouse DynaSync™ provides automatic locked-in syncing of the target computer and laptop mouse pointers – eliminating the need to constantly resync the two movements.

The icon on the Remote Desktop Toolbar indicates the synchronization mode status as follows:

Icon	Function
	The A on this icon indicates that Mouse DynaSync is available and is enabled. This is the default setting when Mouse DynaSync is available
	The M on this icon indicates that the Mouse DynaSync is available but is not enabled

When Mouse DynaSync is available, clicking the icon toggles its status between enabled and/or disabled. If disable Mouse DynaSync is chosen, then would need to perform manual syncing procedures described under **Manual Mouse Synchronization**.

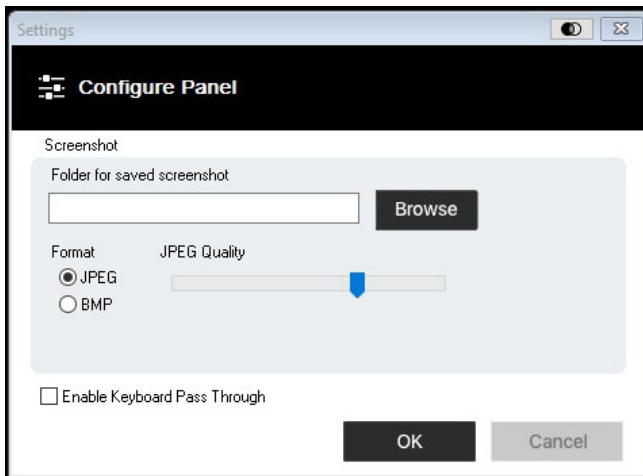
Manual Mouse Synchronization

If the laptop's mouse pointer goes out of sync from the target computer's mouse pointer, there are a number of methods to sync them back together:

1. Perform a video and mouse auto sync by clicking the Video Sync icon on the Remote Desktop Toolbar menu
2. Perform an Auto Sync in Video Settings (see **Video Settings** for more details)
3. Invoke Adjust Mouse function with the Adjust Mouse Hotkey (see **Adjust Mouse** section under **Hotkeys**)
4. Move the pointer into all 4 corners of the screen in any order
5. Drag the Remote Desktop Toolbar to a different position on the screen

Configure Panel

This feature enables users to configure snapshot and keyboard pass through settings:



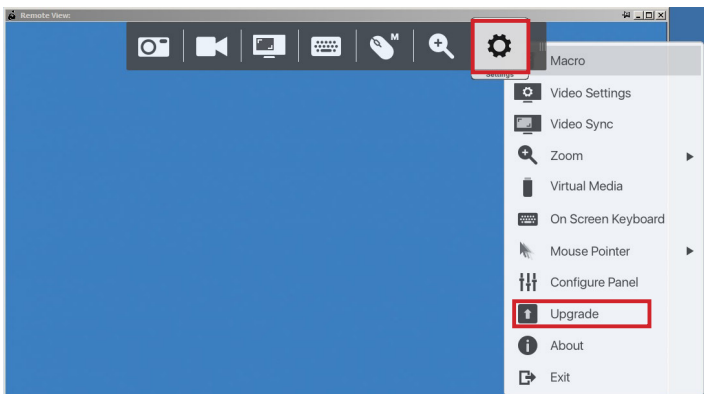
The details of the dialog box is described below:

Item	Description
Screenshot	These settings let the user configure the GUC211V's screen capture parameters, when using Screen Capture from the Remote Desktop Toolbar <ul style="list-style-type: none">• Path lets user select a directory that the captured screens and video files automatically get saved to. Click Browse, navigate to the directory of your choice, then, click OK. If directory is not specified, then the snapshot or video file will be saved onto your desktop• Click a radio button to choose whether the captured screen be saved as a JPEG (JPG) or BMP file.• If JPEG format is chosen, then quality of the captured file can be adjusted. The higher the quality, the better resolution the image will have.
Keyboard Pass Through	When this is enabled, the Alt+Tab key press is passed to the target computer and affects the target computer. When this is disabled, the Alt+Tab key press is functional only on your laptop

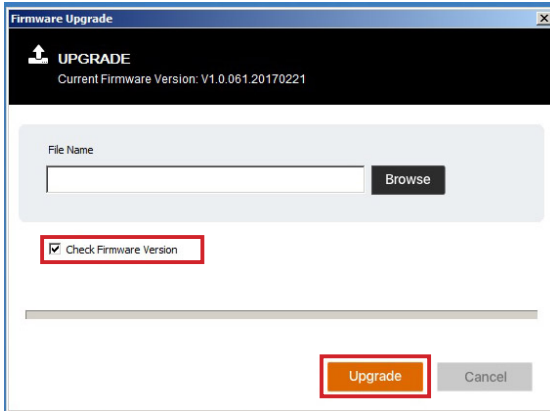
↑ Firmware Upgrade

To upgrade GUC211V firmware, please follow below steps:

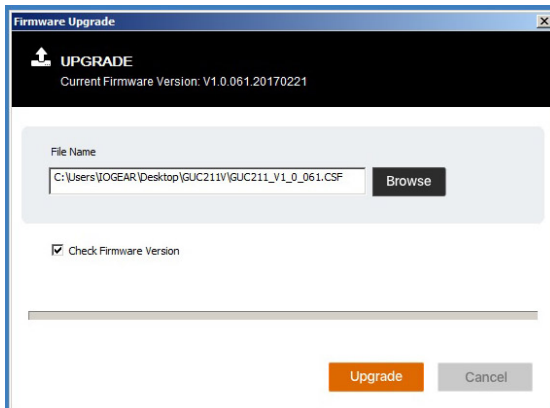
1. Download the latest GUC211V firmware upgrade package from www.IOGEAR.com/product/GUC211V to the laptop
2. Run the WinClient.exe file to open the remote view window. Then, from the Remote Desktop Toolbar, select Settings and Upgrade.



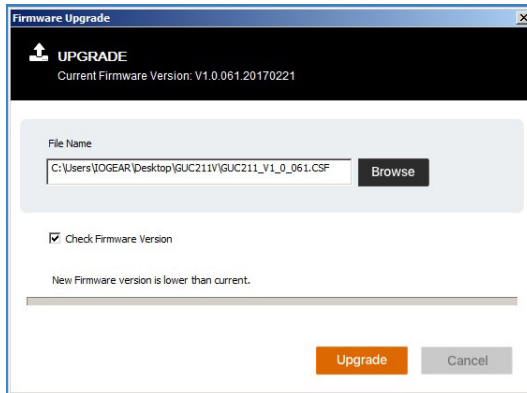
3. The Firmware Upgrade Window opens.



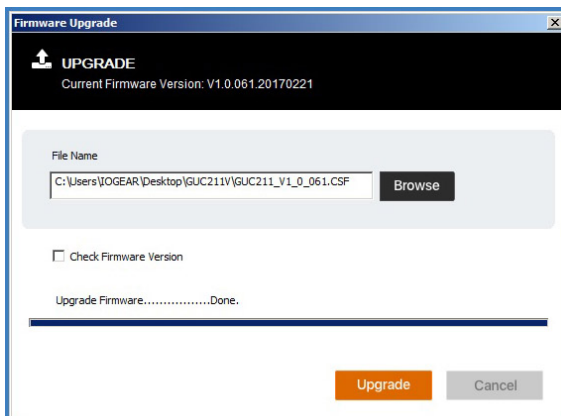
4. Click **Browse**, then navigate the directory of where the new firmware is located, and select the file.



5. Once firmware upgrade package is chosen, click Upgrade to begin the upgrade procedure.
- a. If Check Firmware Version is enabled, then the current firmware level will be compared to that of the upgrade file. If the current version is equal to or higher than the upgrade version, then, a popup message appears to inform you of the situation and stops the upgrade procedure.



- b. If Check Firmware Version is disabled, then. The upgrade file will be installed without checking level of the current firmware.
- c. As the upgrade proceeds, progress information is shown in the Progress Bar. Once the upgrade completes successfully, the GUC211V will reset itself.



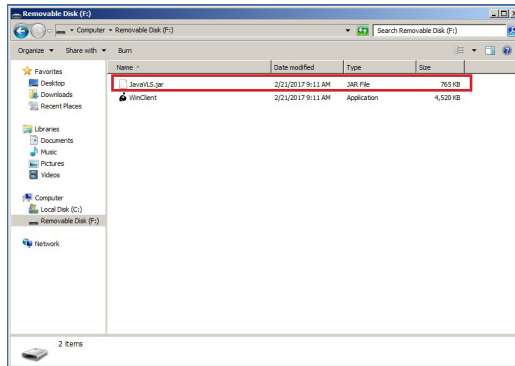
6. User may reconnect the GUC211V to check if the updated firmware version is correct.

The GUC211V can record a video of the target computer's desktop display via the Video icon on the Control Panel. Clicking the Video icon will start and stop the recording. Videos are saved to the laptop's desktop, unless path already specified (see **Configure Panel** section)

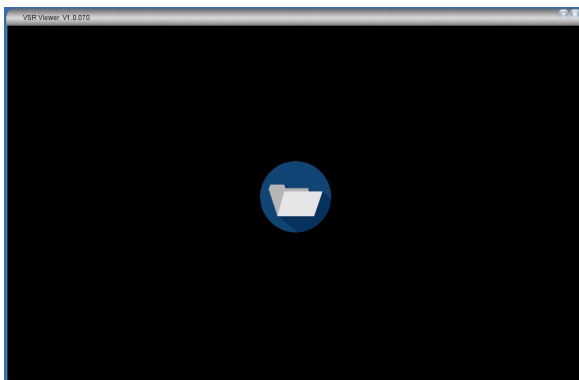
Please make sure that Java is downloaded and ready for use on your laptop.

To open a video file, please follow below steps:

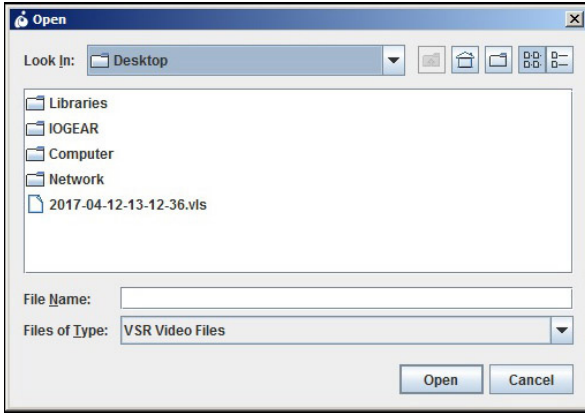
1. Open an Explorer window and access the Removable Drive created for the GUC211V
2. Double click JavaVLS.jar to launch the VSR Viewer.












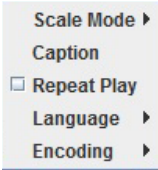
3. VSR Viewer window will appear.


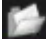




4. Double click the folder icon to browse and open a video file (saved under *.vls format)



Below table explains VSR Viewer Icons in details bottom tool bar only.

Icon	Function
	Double click this icon to browse and open saved *.vls video files
	Drag the round button left or right across the play-bar to bring the video to a specific time or frame. When the mouse is hovered over the play-bar, detailed time and date information will be displayed
	Click this icon to pause the video while on play
	Click this icon to play the video after paused
	Click this icon to fast-forward the video while on play
	Click this icon to rewind the video on play
	Click this icon to mute and unmute the audio
	Increase or decrease volume by dragging the round button across the volume bar
 	<p>Click this icon to open expanded Settings Menu bar</p> <ul style="list-style-type: none"> • Scale Mode <ul style="list-style-type: none"> Keep Video Size – Keeps the video the same size regardless of how the window is adjusted. Parts of the desktop may not appear on the screen if the window is made too small Scale Video to Window – Resizes the video to match the size of the window frame Keep Video Ratio – Keeps the ratio of the video to the window size regardless of how the frame is adjusted • Caption – Opens a window to adjust the text format for on-screen notifications. The caption feature displays text notifications when key-strokes and mouse clicks were performed on the connected computer. More detailed information can be obtained about the typed texts by opening the Control Panel (see Control Panel icon) <ul style="list-style-type: none"> Caption Setting – Clicking the small icon at the top right corner toggles the caption feature on and off Font – Select the font type and size User Key Strokes – Select the text and outline color of the text that represents the keys pressed on the keyboard when the user was accessing the connected computer User Mouse Clicks – Select the text and outline color that represents the mouse clicks pressed when the user was accessing the connected computer Position – Click a box to select where the text will appear on the screen Default – Click to revert the caption text back to default settings • Repeat Play - Puts the video in continuous loop, causing it to replay the video each time it ends • Language - Allows user to select language for the VSR Viewer GUI • Encoding - Allows user to select the video encoding for different regions. Default setting is US-ASCII

	Click this icon to save the video file to a new location and/or under a new file name
	Click this icon to open a new video file. The VLS Viewer can only open video files with the *.vls extension
	Click this icon to open the Control Panel window. The Control Panel displays information about every key that was pressed on the keyboard while the video was recording
	Click this icon to put the VLS Viewer in Full Screen mode. To exit Full Screen mode, click the icon again

Compliance Information

FCC Statement

This equipment has been tested and found to comply with the limits for a Class A digital device, pursuant to Part 15 of the FCC Rules. These limits are designed to provide reasonable protection against harmful interference when the equipment is operated in a commercial environment. This equipment generates, uses, and can radiate radio frequency energy and, if not installed and used in accordance with the instruction manual, may cause harmful interference to radio communications. Operation of this equipment in a residential area is likely to cause harmful interference in which case the user will be required to correct the interference at his own expense.

CE Statement

This device has been tested and found to comply with the following European Union directives: Electromagnetic Capability (2004/108/EC), Low Voltage (2006/95/EC) and R&TTED (1999/5/EC).

Limited Warranty

Warranty Information

This product carries a 3 Year Limited Warranty. For the terms and conditions of this warranty, please go to <http://www.iogear.com/support/warranty>

Register online at <https://www.iogear.com/registration>

Important Product Information

Product Model _____

Serial Number _____

Contact

WE'RE HERE TO HELP YOU!

NEED ASSISTANCE SETTING UP THIS PRODUCT?

Make sure you:

1. Visit www.iogear.com for more product information
2. Visit www.iogear.com/support for live help and product support

IOGEAR

www.iogear.com

iogear.custhelp.com

support@iogear.com

