

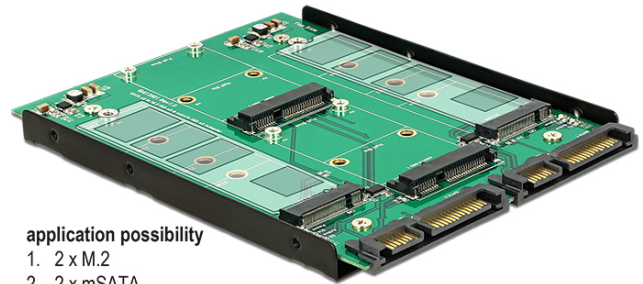
## Item No. 62946

# Delock 3.5" Converter 2 x SATA 22 pin > Dualport 2 x M.2 / 2 x mSATA

### Description

This Delock converter enables the usage of up to two SSDs simultaneously. It can be used to connect M.2 SSDs in 2280, 2260, 2242 and 2230 format and mSATA SSDs in full size and half size format. The converter can be installed into the system through the SATA interfaces.

**M.2**



#### application possibility

1. 2 x M.2
2. 2 x mSATA
3. 1 x M.2 + 1 x mSATA
4. 1 x M.2
5. 1 x mSATA

### Specification

- Connectors:  
2 x SATA 6 Gb/s 22 pin plug >  
2 x 67 pin M.2 key M slot  
2 x mSATA slot (half size / full size)
- Interface: SATA
- Supports M.2 modules in format 2280, 2260, 2242 and 2230 with key B or key B+M based on SATA
- Maximum height of the components on the module: 1.35 mm, application of double-sided assembled modules supported
- Data transfer rate up to 6 Gb/s
- Maximum power for modules: 3 A
- Short circuit protection, over heating protection
- ESD protection up to 2 kV
- Bootable
- LED indicator
- Dimensions (LxWxH): ca. 132 x 102 x 10 mm

### System requirements

- Windows 7/7-64/8.1/8.1-64/10/10-64, Linux ex Kernel 3.17.x / Kernel 4.x.x
- Two free SATA 22 pin interfaces

### Package content

- 3.5" Converter SATA > M.2 / mSATA
- Mounting material
- User manual

### Additional Information

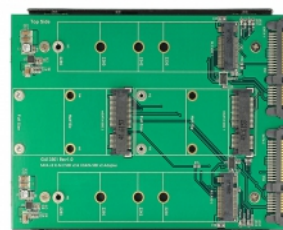
EAN: 4043619629466

Country of origin: Taiwan, Republic of China

Package: Retail Box



### Images



| General   |   |
|---|---|
| Form factor:                                    | 3.5"  |
| function:                                       | bootable  |
| Supported operating system:                     | Linux ex Kernel 3.17<br>Linux ex Kernel 4.x.x<br>Windows 7 32-bit<br>Windows 7 64-bit<br>Windows 8.1 32-bit<br>Windows 8.1 64-bit<br>Windows 10 32-bit<br>Windows 10 64-bit |
| Slot:   | SATA  |
| Supported module:                               | M.2 modules in format 2280, 2260, 2242 and 2230 with key B or key B+M based on SATA   |
| Maximum height of the components on the module: | 1.35 mm application of double-sided assembled modules supported   |
| Protection:                                     | ESD (Electrostatic Discharge)<br>Short circuit protection<br>Overheating protection   |
| Interface                                       |   |
| connector 1:                                    | 2 x SATA 6 Gb/s 22 pin plug   |
| connector 2:                                    | 2 x 67 pin M.2 key B slot   |
| connector 3:                                    | 2 x mSATA slot (half size / full size)  |
| Physical characteristics                        |   |
| Length:   | 132 mm  |
| Width:  | 102 mm  |
| Height:   | 10 mm   |