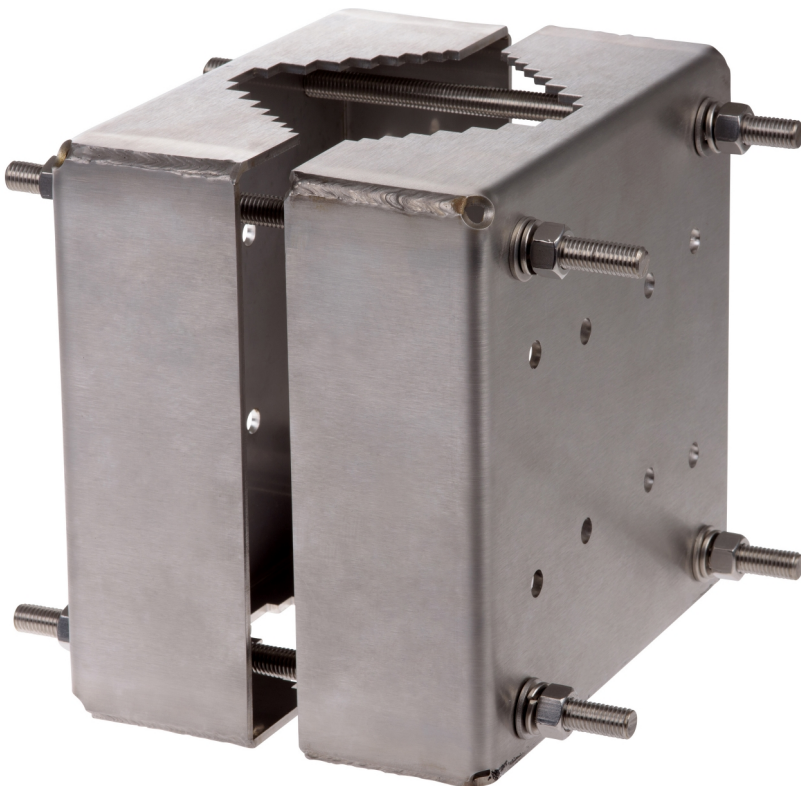


Pole Mount ExCam XPT

Pole mount for explosion-protected PTZ network cameras

Pole Mount ExCam XPT is made of stainless steel and designed for ExCam XPT Q6055 Explosion-Protected PTZ Network Camera. Together with the required Wall Mount ExCam XPT, it allows the camera to be mounted on poles. Pole Mount ExCam XPT is suitable for pole diameters between 110 to 150 mm (4.3 to 5.9 in). The pole mount is ideal for onshore, offshore, marine, and heavy industrial applications.

- > **Made of stainless steel EN 1.4404 (ASTM 316L)**
- > **For pole diameters from 110 to 150 mm (4.3 to 5.9 in)**
- > **Resistant to corrosion**
- > **Sturdy and safe**
- > **Compatible with ExCam XPT Q6055**



Pole Mount ExCam XPT

General	
Supported products	ExCam XPT Q6055 Explosion-Protected PTZ Network Camera
Material	Stainless steel EN 1.4404 (ASTM 316L)
Maximum load	50 kg (110 lb)
Dimensions	228 x 376 x 155 mm (9 x 14 13/16 x 6 1/8 in) without pole
Weight	3.5 kg (7.7 lb)

Required accessories	Wall Mount ExCam XPT
Optional accessories	For more accessories, see axis.com
Warranty	3-year warranty, see axis.com/warranty

Environmental responsibility:
axis.com/environmental-responsibility