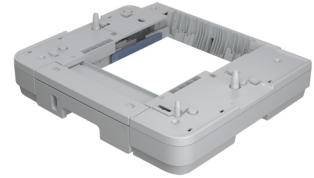
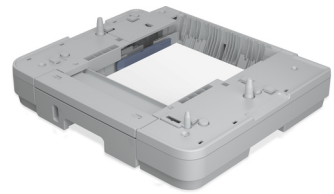


Epson 250-Sheet Paper Cassette Unit

Brand : Epson

Product code: C12C817011

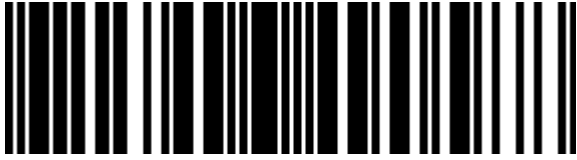
Product name : 250-Sheet Paper Cassette Unit



250-Sheet Paper Cassette Unit

Epson 250-Sheet Paper Cassette Unit. Brand compatibility: Epson, Compatibility: WorkForce Pro WP-4015DN WorkForce Pro WF-M5190DW WorkForce Pro WP-4025DW WorkForce Pro WP-4095DN..., Maximum capacity: 250 sheets. Quantity per pack: 1 pc(s), Package width: 185 mm, Package depth: 610 mm. Products per pallet: 20 pc(s), Pallet gross length: 120 cm, Pallet gross width: 80 cm. Standard media sizes: A4, A5, A6, B5, 10x15cm, 13x18cm, 9x13cm, Letter, Legal, Half Letter, 13x20cm, 20x25cm, 100x148mm,.... Custom media sizes: 89 ~ 215.9mm - 127 ~ 1.117mm

Features		Packaging data	
Brand compatibility *	Epson	Package depth	610 mm
	WorkForce Pro WP-4015DN	Package height	520 mm
	WorkForce Pro WF-M5190DW	Package weight	3.94 g
	WorkForce Pro WP-4025DW		
	WorkForce Pro WP-4095DN	Logistics data	
	WorkForce Pro WP-4515DN	Products per pallet	20 pc(s)
Compatibility *	WorkForce Pro WP-4525DNF	Pallet gross length	120 cm
	WorkForce Pro WP-4535DWF	Pallet gross width	80 cm
	WorkForce Pro WP-4595DNF	Pallet gross height	2 m
	WorkForce Pro WF-5110DW	Products per pallet layer	2 pc(s)
	WorkForce Pro WF-5620DWF	Products per pallet layer (UK)	2 pc(s)
	WorkForce Pro WF-M5690DWF	Products per pallet (UK)	20 pc(s)
Maximum capacity	250 sheets	Pallet length (UK)	120 cm
	A4, A5, A6, B5, 10x15cm, 13x18cm,	Pallet width (UK)	100 cm
Standard media sizes	9x13cm, Letter, Legal, Half Letter,	Pallet height (UK)	2 m
	13x20cm, 20x25cm, 100x148mm,	Harmonized System (HS) code	84439990
	#10, DL, C6, C4	Other features	
Country of origin	Japan	Custom media sizes	89 ~ 215.9mm - 127 ~ 1.117mm
Media formats			
Letter	✓		
Legal	✓		
Packaging data			
Quantity per pack	1 pc(s)		
Package width	185 mm		



8715946490588



0012304324393



012304324393



0010343884847



010343884847

Disclaimer. The information published here (the "Information") is based on sources that can be considered reliable, typically the manufacturer, but this Information is provided "AS IS" and without guarantee of correctness or completeness. The Information is only indicative and can be changed at any time without notification. No rights can be based on the Information. Suppliers or aggregators of this Information do not accept any liability with regard to the content of (web)pages and other documents, including its Information. The publisher of the Information can not be held liable for the content of 3rd party websites that are linking this Information or are linked to from this Information. You as the User of the Information are solely responsible for the choice and usage of this Information. You are not entitled to transfer, copy or otherwise multiply or distribute the Information. You are obliged to follow the directions of the copyright owner(s) with regard to the use of the Information. Exclusively Dutch law is applicable. With regard to price and stock data on the site, the publisher followed a number of starting points, which are not necessarily relevant for your private or business circumstances. Therefore, the price and stock data are only indicative and are subject to changes. You are personally responsible for the way you use and apply this information. As a user of the Information or sites or documents in which this Information is included, you will adhere to standard fair use including avoidance of spamming, ripping, intellectual-property violations, privacy violations, and any other illegal activity.