



Wireless Cube Camera Hardware Manual

C11W

Ver. 2016/01/08



ACTi
Connecting Vision

Table of Contents

Precautions **3**

Safety Instructions 5

Introduction **6**

List of Models..... 6

Package Contents..... 7

Physical Description 8

Basic Connections **10**

Connecting the Antenna 10

Connecting to Power 10

Connecting to a Wired Network..... 11

Connecting Audio Output Device (optional)..... 11

Installing the Memory Card (optional)..... 11

Installing the Camera **13**

Mounting the Bracket 13

Mounting the Camera 13

Adjusting the Viewing Angle and Focus..... 14

Connecting for the First Time **15**

Accessing the Camera **20**

Precautions

Read these instructions

You should read all the safety and operating instructions before using this product.

Heed all warnings

You must adhere to all the warnings on the product and in the instruction manual. Failure to follow the safety instruction given may directly endanger people, cause damage to the system or to other equipment.

Servicing

Do not attempt to service this video device yourself as opening or removing covers may expose you to dangerous voltage or other hazards. Refer all servicing to qualified service personnel.

Trademarks

All company names used in this manual are registered trademarks of their respective companies.

Liability

Every reasonable care has been taken during the writing of this manual. Please inform your local office if you find any inaccuracies or omissions. We cannot be held responsible for any typographical or technical errors and reserve the right to make changes to the product and manuals without prior notice.

Federal Communications Commission Statement



This equipment has been tested and found to comply with the limits for a class B digital device, pursuant to Part 15 of the FCC Rules. These limits are designed to provide reasonable protection against harmful interference in a residential installation. This equipment generates, uses, and can radiate radio frequency energy and, if not installed and used in accordance with the instructions, may cause harmful interference to radio communications. However, there is no guarantee that interference will not occur in a particular installation. If this equipment does cause harmful interference to radio or television reception, which can be determined by turning the equipment off and on, the user is encouraged to try to correct the interference by one or more of the following measures:

- Reorient or relocate the receiving antenna.
- Increase the separation between the equipment and receiver.
- Connect the equipment into an outlet on a circuit different from that to which the receiver is connected.
- Consult the dealer or an experienced radio/TV technician for help.

Warning: Changes or modifications to the equipment that are not expressly approved by the responsible party for compliance could void the user's authority to operate the equipment.

European Community Compliance Statement



This product has been tested and found to comply with the limits for Class B Information Technology Equipment according to European Standard EN 55022 and EN 55024. In a domestic environment, this product may cause radio interference in which cause the user may be required to take adequate measures.

Safety Instructions

Don't open the housing of the product

Cleaning

Disconnect this video product from the power supply before cleaning.

Attachments

Do not use attachments not recommended by the video product manufacturer as they may cause hazards.

Water and Moisture

Do not use this video product near water, for example, near a bathtub, washbowl, kitchen sink, or laundry tub, in a wet basement, or near a swimming pool and the like.

Don't use accessories not recommended by the manufacturer

Only install this device in a dry place protected from weather

Servicing

Do not attempt to service this video product yourself as opening or removing covers may expose you to dangerous voltage or other hazards. Refer all servicing to qualified service personnel.

Damage Requiring service

Disconnect this video product from the power supply immediately and refer servicing to qualified service personnel under the following conditions.

- 1) When the power-supply cord or plug is damaged
- 2) If liquid has been spilled, or objects have fallen into the video product.
- 3) If the video product has been directly exposed to rain or water.
- 4) If the video product does not operate normally by following the operating Instructions in this manual. Adjust only those controls that are covered by the instruction manual, as an improper adjustment of other controls may result in damage, and will often require extensive work by a qualified technician to restore the video product to its normal operation.


Safety Check

Upon completion of any service or repairs to this video product, ask the service technician to perform safety checks to determine if the video product is in proper operating condition.








Introduction

List of Models

This hardware manual contains the following models:

C11W		1.3MP Wireless Cube with Basic WDR, Fixed lens

Package Contents

Camera	Antenna	Power Adapter
		
Bracket	Mounting Screws	Quick Installation Guide
		
Warranty Card		
		

Physical Description



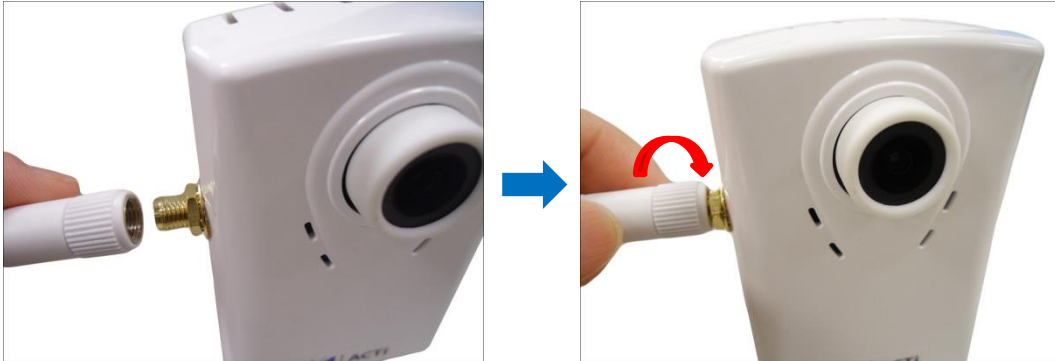
	Item	Description
1	DC 12V Power	Connects to the power adapter to supply power to the camera.
2	Ethernet Port	Connects to a network using a standard Ethernet cable. There are two (2) LED indicators on the Ethernet port that indicate the camera status: <ul style="list-style-type: none"> • Power / Wireless LED (Amber) <ul style="list-style-type: none"> ○ Solid LED: Power is on and camera is ready. ○ Flashing LED: Wireless connection is in progress. The flashing speed indicates the speed of the wireless connection (slow or fast). ○ Solid + Flashing LED (with undetermined pattern): Indicates that the camera is searching for a wireless network. • LAN LED (Green) <ul style="list-style-type: none"> ○ Solid LED: No network connection via Ethernet. ○ Flashing LED: Camera is connected to the network via Ethernet.
3	Audio Output	Connects to audio output devices, such as a speaker, etc.
4	Built-in Microphone	Receives audio input.
5	Memory Card Slot	Insert a memory card into this slot for local recording purposes. NOTE: Supports microSDHC only.

Item		Description
6	Reset Button	<p>Restores the camera to its factory default settings.</p> <p>How to reset the camera?</p> <ol style="list-style-type: none">1. Power off the camera.2. Press and hold the RESET button as you power on the camera.3. Continuously press the RESET button until the Amber LED lights up which will normally take about 30 seconds to complete.

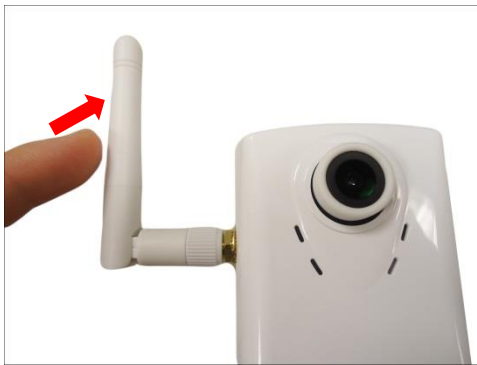
Basic Connections

Connecting the Antenna

1. Screw the antenna to the antenna jack.



2. Turn the antenna to its vertical position.



Connecting to Power

Connect one end of the bundled power adapter to the camera DC 12V jack and the other end to a power outlet.



Connecting to a Wired Network

Connect one end of an Ethernet cable to the LAN port of the camera and the other end to a network switch.



Connecting Audio Output Device (optional)

If necessary, connect the audio out device jack to the audio out port of the camera.



Installing the Memory Card (optional)

1. Insert the memory card with the metal contacts facing the back of the camera.



2. Push the card until it clicks into place.



NOTE: Supports microSDHC cards only.

Installing the Camera

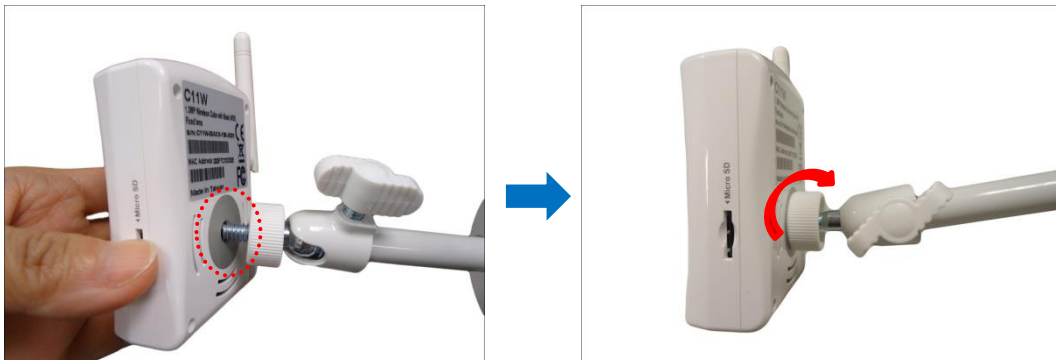
Mounting the Bracket

Attach the bracket to the wall using the three (3) supplied screws.



Mounting the Camera

1. Attach the camera to the bracket and tighten the knob.



2. Adjust the tilt angle and tighten the knob to fix the camera position.



Adjusting the Viewing Angle and Focus

Based on the live view, adjust the camera viewing angle and focus to get the target view.

1. Loosen the knob and tilt the camera towards the target view.



2. Tighten the knob to fix the camera position.
3. The camera comes with a pre-fixed focus applicable for most environments. If there is a need make adjustments when viewing the camera Live View, turn the lens left or right to adjust the focus.



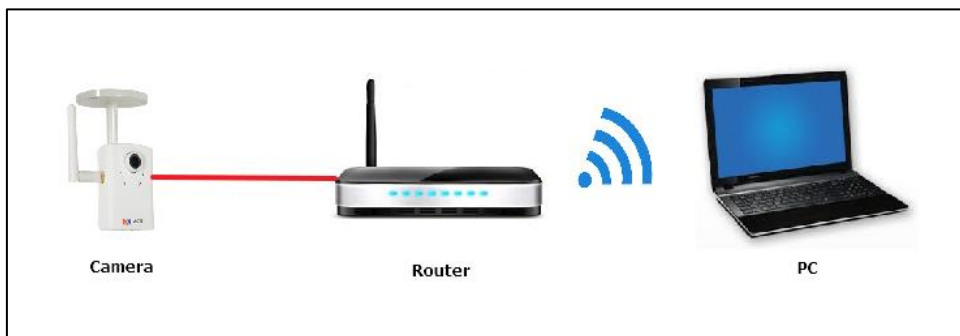
Connecting for the First Time

When setting up the camera for the first time, the setup must be done by wired connection using Ethernet even if the camera will be used wirelessly. To do the initial setup, the camera and the PC must be connected to the same network access point, such as a router. Also, set the PC default browser to **Microsoft Internet Explorer**.

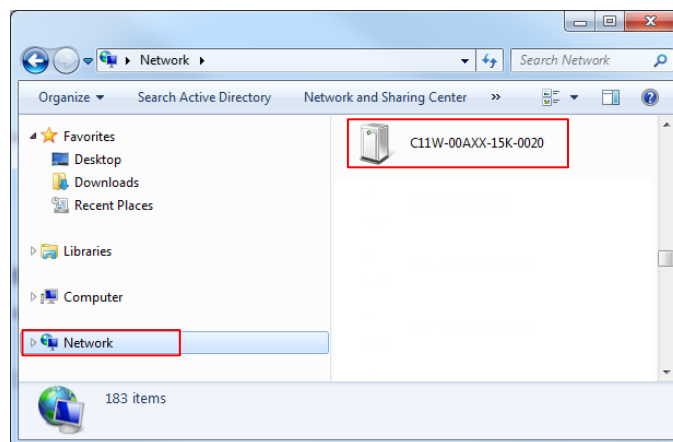
1. Plug the camera power adapter to the power source. Once the camera is powered up, the power LED (amber) lights up.
2. Plug the Ethernet cable to the camera.



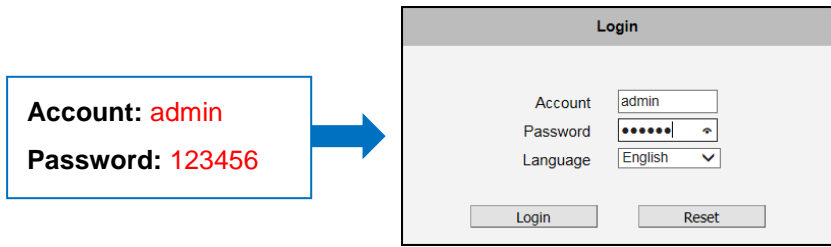
3. Plug the other end of the Ethernet cable to one of the LAN ports on the router.




4. In Windows system, click **Network** and double-click on the camera model to open the Web Configurator page.



- On the Login page, enter the default **Account** and **Password** and then click **Login**.

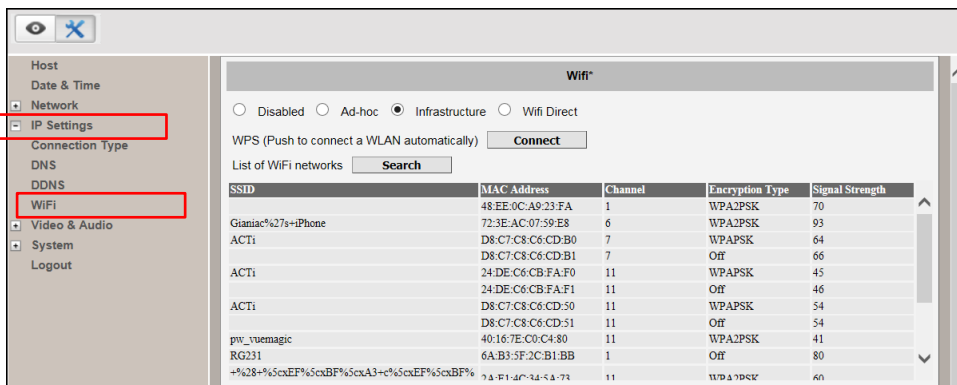


NOTE: Install ActiveX Control for video streaming management when prompted in Internet Explorer.

- After login, the Live View page is displayed. Click the SETUP  icon.



- From the SETUP menu, click **IP Settings > WiFi**.



8. Setting up wireless connection can be managed by one of the following ways: **Wi-Fi Protected Setup (WPS)** or **Manual Setup**.

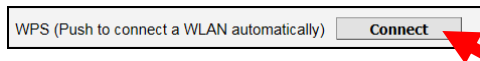
- A. **Wi-Fi Protected Setup (WPS):** WPS provides simple and secure wireless connection between the devices by pressing the WPS button on both devices. The router must have a WPS button (refer to Router documentation for details) to use this feature.

To connect or pair devices by WPS:

- a. Press the WPS button on the router.



- b. Click the **Connect** button on the Web Configurator.



- c. Pairing of devices may take a few minutes to complete. Once the camera is successfully paired with the router, the Amber LED will flash quickly.



- d. Disconnect the Ethernet cable from the camera. Wireless setup is complete.



- e. Access the camera via wireless network connection. See [Accessing the Camera](#) on page 20.

NOTE: For more detailed information, refer to the Firmware Manual downloadable from www.acti.com.

B. **Manual Setup:** This function searches for the wireless network and lets the user to manually configure the wireless settings by entering the security mode, passcode and other required parameters to connect to the network.

- a. On the **WiFi** page, click **Search** to list the available networks within the camera range.

SSID	MAC Address	Channel	Encryption Type	Signal Strength
Gianiac%27s+iPhone	72:3E:AC:07:59:E8	1	WPA2PSK	100
RG231	6A:B3:5F:2C:B1:BB	1	Off	76
	48:EE:0C:A9:23:FA	1	WPA2PSK	92
%5cxE6%5cxA1%5cx83%5cxE6%5cxA8%5cx82%5cxE6%5cxAF%5cx94	78:F8:82:B7:22:1D	6	WPA2PSK	70
	D8:C7:C8:C6:CD:51	11	Off	56
+%28+%5cxEF%5cxBF%5cxA3+c%5cxEF%5cxBF%5cxA3%29%5cxE2%5cx96%5cx82%5cxCE%5cxBE	2A:E1:4C:34:5A:73	11	WPA2PSK	86
ACTi	24:DE:C6:CB:FA:F0	11	WPAPSK	46
	24:DE:C6:CB:FA:F1	11	Off	46
	D8:C7:C8:C6:CD:B1	7	Off	68

- b. Click the **SSID**, commonly known as the network name of the wireless network that you want to connect to.
- c. Scroll down the WiFi page to see the wireless network security settings. The displayed parameters change according to the configurations of the selected wireless network.
- d. Normally, wireless networks are encrypted for security and depending on the encryption type, may require WEP or WPA key. Enter the passcode on the space provided.

SSID
Channel
Security Mode None WEP WPA_PSK/WPA2_PSK
WPA Mode AES TKIP
WPA Key
(ASCII : 8~63 digits; HEX : 64 digits)
 Get IP address automatically (DHCP)
IP Address . . .
Subnet Mask . . .
Gateway . . .

NOTE: Refer to the camera Firmware Manual for more detailed description of the wireless network settings.

- e. Then, click **Apply** to connect to the wireless network. Once the camera is successfully connected, the Amber LED will flash quickly.



- f. Disconnect the Ethernet cable from the camera. Wireless setup is complete.



- g. Access the camera via wireless network connection. See [Accessing the Camera](#) on page 20.

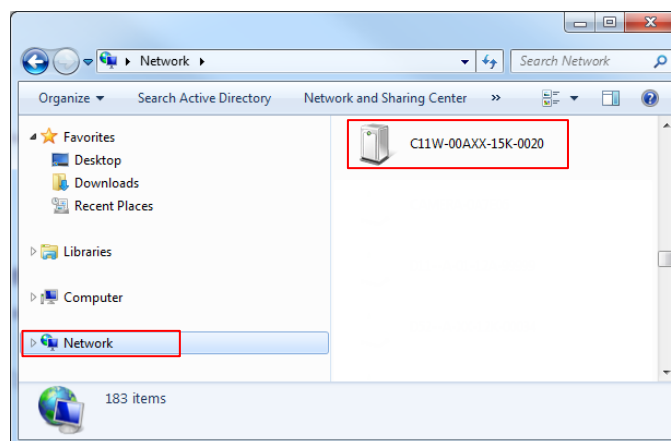
NOTE: For more detailed information, refer to the Firmware Manual downloadable from www.acti.com.

Accessing the Camera

To access the camera live view, the camera and the PC must belong to the same network. A sample connection diagram is shown below.



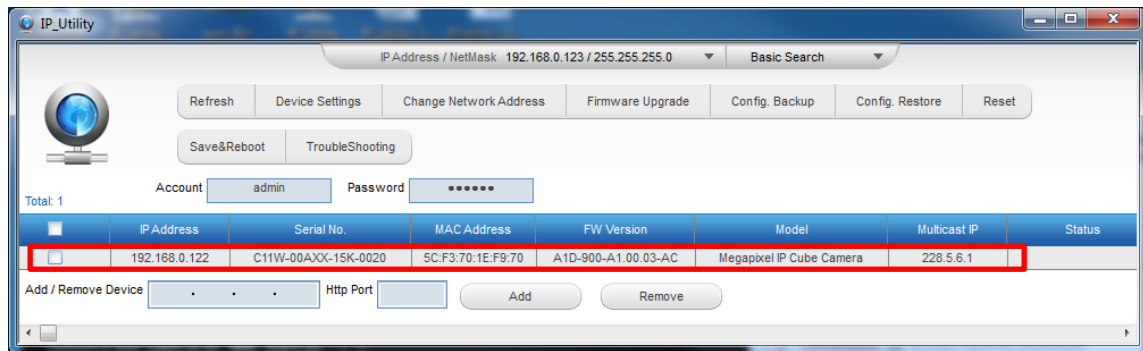
The quickest way to discover the cameras in the network is to use the simplest network search, built in the Windows system. In Windows system, click **Network** and double-click on the camera model to launch the default browser of the PC with the IP address of the target camera filled in the address bar of the browser already.



If you work with our cameras regularly, then **there is even a better way to discover the cameras in the network** – by using **IP Utility**. The IP Utility is a light software tool that can not only discover the cameras, but also list lots of valuable information, such as IP and MAC addresses, serial numbers, firmware versions, etc., and allows quick configuration of multiple devices at the same time.

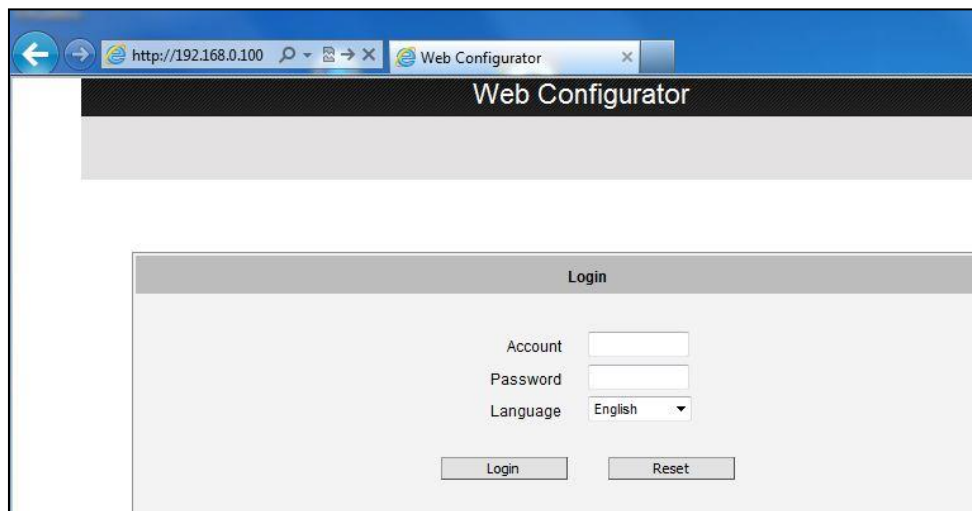
Search and download the latest IP Utility from <http://www.acti.com/DownloadCenter>.

Upon launching of IP Utility, an instant report will be shown as follows:

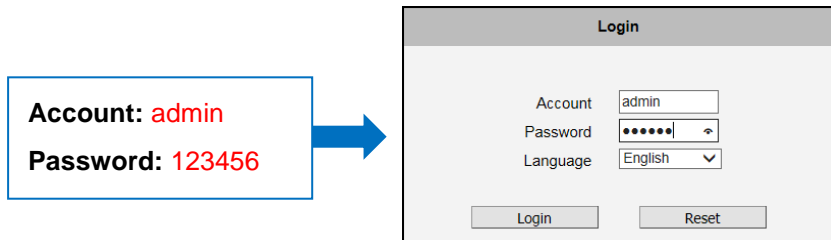


You can quickly notice the camera model in the list. Click on the IP address to automatically launch the default browser of the PC with the IP address of the target camera filled in the address bar of the browser already.

The user interface called **Web Configurator** appears with the Login page.



Enter the default **Account** and **Password** and then click **Login**.



NOTE: For more detailed information, refer to the Firmware Manual downloadable from www.acti.com.



Copyright © 2016, ACTi Corporation All Rights Reserved

7F, No. 1, Alley 20, Lane 407, Sec. 2, Ti-Ding Blvd., Neihu District, Taipei, Taiwan 114, R.O.C.

TEL : +886-2-2656-2588 FAX : +886-2-2656-2599

Email: sales@acti.com