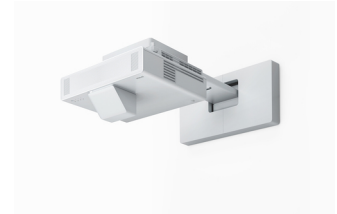


## Epson EB-800F

**Tuotemerkki :** Epson

**Tuotekoodi:** V11H923540

**Tuotteen nimi :** EB-800F



- Ultralyhyen etäisyyden projektori: Kompakti ja huomaamaton muotoilu.
- Jopa 130 tuuman näyttö: Full HD -resoluutio, 5 000 lumenin kirkkaus ja 3LCD-tekniikka
- Vankka luotettavuus: Helposti ylläpidettävä laserprojektor, jolla on 5 vuoden takuu
- Helppo asentaa: 360 asteen kierto ja mahdollisuus pystyheijastukseen
- Joustava toisto: Toista sisältöä suoraan USB-muistitikulta

EB-800F

Epson EB-800F. Projektorin kirkkaus: 5000 ANSI lumenia, Projektioteknologia: 3LCD, Projektorin oletusresoluutio: 1080p (1920x1080). Valonlähteen tyyppi: Laser, Valonlähteen käyttöikä: 20000 h, Valonlähteen käyttöikä (säästötila): 30000 h. Tarkennus: Ohje, Kiinteä polttoväli: 3,9 mm, Zoomin malli: Auto. Videon käsittely: 10 bittiä, Videon väritilat: Taulu, Elokvateatteri, Dynaaminen, Esitys, sRGB, DICOM-tilannetila, Multi-projection. Sarjaliitännän tyyppi: RS-232C

Projector		Features	
Screen size compatibility *	1651 - 3302 mm (65 - 130")	Country of origin	China
Projection distance (wide)	0 - 0.4 m	Password protection	✓
Projection distance (tele)	0 - 0.8 m	<b>Multimedia</b>	
Projector brightness *	5000 ANSI lumens	Built-in speaker(s) *	✓
Projection technology *	3LCD	RMS rated power	8 W
Projector native resolution *	1080p (1920x1080)	Number of built-in speakers	2
Contrast ratio (typical) *	2500000:1	<b>Design</b>	
Native aspect ratio *	16:9	Market positioning *	Business
Number of colours	1.07 billion colours	Product type *	Ultra short throw projector
Projector brightness (economic mode)	3500 ANSI lumens	Product colour *	White
Vertical scan range	192 - 240 Hz	Placement	Ceiling, Desktop, Wall
Keystone correction, horizontal	-3 - 3°	Cable lock slot	✓
Keystone correction, vertical	-3 - 3°	Cable lock slot type	Kensington
Matrix size	1.57 cm (0.62")	<b>Power</b>	
Heat dissipation	1244 BTU/h	Power source *	AC
<b>Light source</b>		Power consumption (typical) *	366 W
Light source type *	Laser	Power consumption (standby) *	0.5 W
Service life of light source *	20000 h	Power consumption (economy mode)	262 W
Service life of light source (economic mode)	30000 h	AC input voltage	220-240 V
<b>Lens system</b>		AC input frequency	50 - 60 Hz
Focus *	Manual	<b>Software</b>	
Fixed focal length	3.9 mm	Software support	via: Crestron Integrated Partner, Crestron RoomView, Extron IP Link, Extron XTP, AMX Device Discovery, Control4 Simple Device Discovery Protocol
Zoom capability	✓	<b>Operational conditions</b>	
Zoom type	Auto	Storage temperature (T-T)	-10 - 60 °C
Zoom ratio	1.35:1	Operating relative humidity (H-H)	20 - 80%
Throw ratio	0.27 - 0.37:1	Storage relative humidity (H-H)	10 - 90%
<b>Video</b>		<b>Weight &amp; dimensions</b>	
Full HD *	✓	Width	458 mm
3D *	✗	Depth	375 mm
Video processing	10 bit	Height	210 mm
Video colour modes	Blackboard, Cinema, Dynamic, Presentation, sRGB, DICOM simulation mode, Multi-projection		

Ports & interfaces		Weight & dimensions	
HDBaseT port	✓	Weight *	9.4 kg
USB 2.0 ports quantity	2	Package width	530 mm
USB 2.0 Type-B ports quantity	1	Package depth	595 mm
Audio (L/R) in *	3	Package height	345 mm
Audio (L/R) out	1	Package weight	13.2 kg
Serial interface type *	RS-232C	Packaging content	
VGA (D-Sub) ports quantity *	3	Remote control included *	✓
HDMI ports quantity *	4	Batteries included	✓
Composite video in *	1	Cables included	AC
DVI port *	✗	Warranty card	✓
Network		WLAN adapter included	✓
Smart TV *	✗	Packaging content	CD manual, cable cover, lens cap, warranty document
Ethernet LAN *	✓	Bundled software	Inhalt DIY-App, EasyMP Multi PC Projection, Epson Projektor Content Manager, Epson Projektor Management
Ethernet LAN (RJ-45) ports	1	Technical details	
Ethernet LAN data rates	10,100 Mbit/s	Sustainability certificates	TCO
Wi-Fi *	✗	Logistics data	
Web browser	✓	Quantity per pack	1 pc(s)
Storage		Products per pallet	12 pc(s)
Card reader integrated *	✗	Pallet gross weight	0 g
Features		Products per pallet (UK)	12 pc(s)
Noise level (economic mode)	27 dB	Pallet weight (UK)	0 g
Noise level *	36 dB	Harmonized System (HS) code	85286200
		Other features	
		Supported network protocols	HTTPS, IPv6, SNMP, ESC/VP.net, PJLink



8715946688992

Disclaimer. The information published here (the "Information") is based on sources that can be considered reliable, typically the manufacturer, but this Information is provided "AS IS" and without guarantee of correctness or completeness. The Information is only indicative and can be changed at any time without notification. No rights can be based on the Information. Suppliers or aggregators of this Information do not accept any liability with regard to the content of (web)pages and other documents, including its Information. The publisher of the Information can not be held liable for the content of 3rd party websites that are linking this Information or are linked to from this Information. You as the User of the Information are solely responsible for the choice and usage of this Information. You are not entitled to transfer, copy or otherwise multiply or distribute the Information. You are obliged to follow the directions of the copyright owner(s) with regard to the use of the Information. Exclusively Dutch law is applicable. With regard to price and stock data on the site, the publisher followed a number of starting points, which are not necessarily relevant for your private or business circumstances. Therefore, the price and stock data are only indicative and are subject to changes. You are personally responsible for the way you use and apply this information. As a user of the Information or sites or documents in which this Information is included, you will adhere to standard fair use including avoidance of spamming, ripping, intellectual-property violations, privacy violations, and any other illegal activity.