

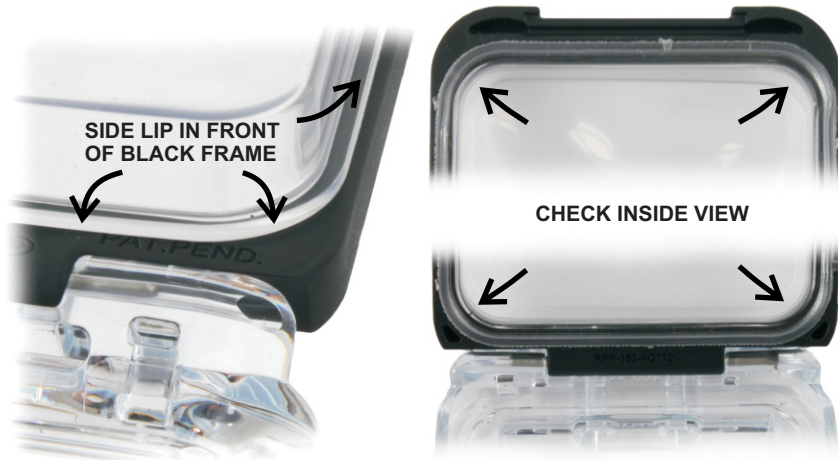
RAM AQUA BOX™ PRO 10 SERIES

CAUTION: THIS PRODUCT IS NOT INTENDED FOR UNDERWATER USE. THE RAM AQUA BOX™ PRO SERIES IS INTENDED TO PROTECT YOUR DEVICE FROM SPLASH, MUD, RAIN OR OTHER HARSH WEATHER. DO NOT SUBMERGE AQUA BOX™ UNDER WATER. THE ELECTRONIC DEVICE IS NOT COVERED FOR DAMAGE WHEN USING THIS PRODUCT.



FLEX LENS PLACEMENT

INSERT FLEX-LENS FROM BEHIND BLACK AQUA BOX FRAME. SECURE THE SIDE LIP OF THE LENS IN FRONT OF THE BLACK FRAME. WORK YOUR WAY AROUND THE ENTIRE LENS TO SECURE IN PLACE. PRESS FIRMLY AGAINST EACH CORNER TO ENSURE PROPER LENS FITMENT. CHECK LENS FITMENT PERIODICALLY TO KEEP FITTING CONSISTENT.



FOAM PAD PLACEMENT

OPTIONAL FOAM STRIPS CAN BE CUT AND CONFIGURED TO ACCOMMODATE THIN DEVICES. FOAM STRIP CONFIGURATIONS MAY VARY DEPENDING ON DEVICE. THE FOLLOWING EXAMPLE DEMONSTRATES THE STANDARD USE OF EITHER FOAM STRIP.



YOUR DEVICE IS NOT REQUIRED TO MAKE FIRM CONTACT WITH FLEX LENS IN ORDER TO BE A SECURE FIT.

RMR-INS-AQ7-1

National Products, Inc. 8410 Dallas Ave S. Seattle, WA 98108 206-763-8361 www.rammount.com

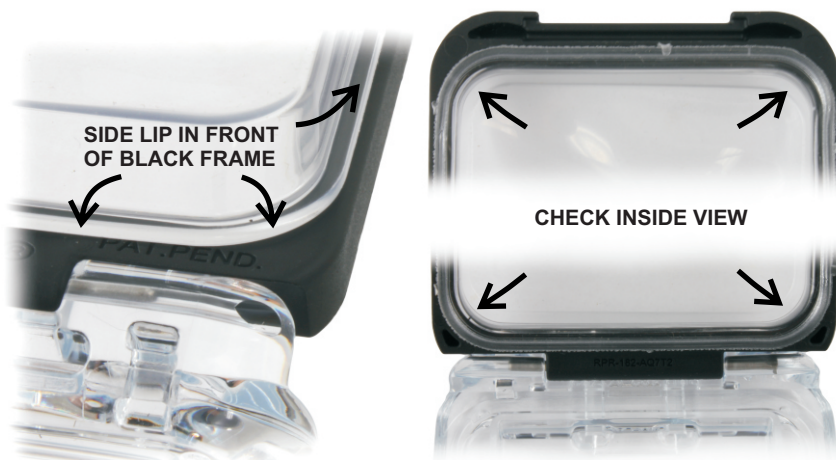
RAM AQUA BOX™ PRO 10 SERIES

CAUTION: THIS PRODUCT IS NOT INTENDED FOR UNDERWATER USE. THE RAM AQUA BOX™ PRO SERIES IS INTENDED TO PROTECT YOUR DEVICE FROM SPLASH, MUD, RAIN OR OTHER HARSH WEATHER. DO NOT SUBMERGE AQUA BOX™ UNDER WATER. THE ELECTRONIC DEVICE IS NOT COVERED FOR DAMAGE WHEN USING THIS PRODUCT.



FLEX LENS PLACEMENT

INSERT FLEX-LENS FROM BEHIND BLACK AQUA BOX FRAME. SECURE THE SIDE LIP OF THE LENS IN FRONT OF THE BLACK FRAME. WORK YOUR WAY AROUND THE ENTIRE LENS TO SECURE IN PLACE. PRESS FIRMLY AGAINST EACH CORNER TO ENSURE PROPER LENS FITMENT. CHECK LENS FITMENT PERIODICALLY TO KEEP FITTING CONSISTENT.



FOAM PAD PLACEMENT

OPTIONAL FOAM STRIPS CAN BE CUT AND CONFIGURED TO ACCOMMODATE THIN DEVICES. FOAM STRIP CONFIGURATIONS MAY VARY DEPENDING ON DEVICE. THE FOLLOWING EXAMPLE DEMONSTRATES THE STANDARD USE OF EITHER FOAM STRIP.



YOUR DEVICE IS NOT REQUIRED TO MAKE FIRM CONTACT WITH FLEX LENS IN ORDER TO BE A SECURE FIT.

RMR-INS-AQ7-1

National Products, Inc. 8410 Dallas Ave S. Seattle, WA 98108 206-763-8361 www.rammount.com

RAM AQUA BOX™ PRO ACCESSORIES

SOME ACCESSORIES MAY NOT BE INCLUDED IN ALL KITS

QUICK RELEASE MOUNTING CLIP

POSITION BOTTOM TWO HOLES OF AQUA BOX™ PRO ONTO THE LOCATOR PINS OF THE MOUNTING CLIP. PRESS AQUA BOX™ BACK AGAINST CLIP TO SNAP THE BACK RECEIVER INTO PLACE. PROVIDED HARDWARE CONNECTS MOUNTING CLIP TO YOUR RAM MOUNT.



SAFETY LANYARD

INSERT THIN LOOP THROUGH LEFT SLOT UNDER THE BOTTOM OF THE AQUA BOX™ PRO. PULL LANYARD THROUGH THE LOOP AND TIGHTEN TO SECURE SAFETY LANYARD.



BELT CLIP BUTTON ADAPTER

SLIDE BUTTON ADAPTER INTO BOTTOM SLOT OF AQUA BOX™ PRO. PRESS FIRMLY TO CLICK BUTTON INTO PLACE. COMPATIBLE WITH STANDARD AFTERMARKET BELT CLIP BUTTON RECEIVERS.



RAM BELT CLIP BUTTON RECEIVER

SECURES OVER BELT CLIP BUTTON ADAPTER.



National Products, Inc. 8410 Dallas Ave S. Seattle, WA 98108 206-763-8361 www.rammount.com

RAM AQUA BOX™ PRO ACCESSORIES

SOME ACCESSORIES MAY NOT BE INCLUDED IN ALL KITS

QUICK RELEASE MOUNTING CLIP

POSITION BOTTOM TWO HOLES OF AQUA BOX™ PRO ONTO THE LOCATOR PINS OF THE MOUNTING CLIP. PRESS AQUA BOX™ BACK AGAINST CLIP TO SNAP THE BACK RECEIVER INTO PLACE. PROVIDED HARDWARE CONNECTS MOUNTING CLIP TO YOUR RAM MOUNT.



SAFETY LANYARD

INSERT THIN LOOP THROUGH LEFT SLOT UNDER THE BOTTOM OF THE AQUA BOX™ PRO. PULL LANYARD THROUGH THE LOOP AND TIGHTEN TO SECURE SAFETY LANYARD.



BELT CLIP BUTTON ADAPTER

SLIDE BUTTON ADAPTER INTO BOTTOM SLOT OF AQUA BOX™ PRO. PRESS FIRMLY TO CLICK BUTTON INTO PLACE. COMPATIBLE WITH STANDARD AFTERMARKET BELT CLIP BUTTON RECEIVERS.



RAM BELT CLIP BUTTON RECEIVER

SECURES OVER BELT CLIP BUTTON ADAPTER.



National Products, Inc. 8410 Dallas Ave S. Seattle, WA 98108 206-763-8361 www.rammount.com