

# VIRTUOSO RGB WIRELESS XT



官方网站: [corsair.com](https://corsair.com)

技术服务热线: 400 841 7130

支持: [support.corsair.com](https://support.corsair.com)

博客: [corsair.com/blog](https://corsair.com/blog)

论坛: [forum.corsair.com](https://forum.corsair.com)

微信: CorsairRMA

© 2020-2022 CORSAIR MEMORY, Inc. 版权所有。  
实物可能与所示图片不同。进口商: 可赛尔 (深圳) 贸易有限公司  
产地: 中国 | 产品: 耳机 | 49-002150 AC  
© 2020-2022 CORSAIR MEMORY, Inc. All rights reserved.



# VIRTUOSO RGB WIRELESS XT

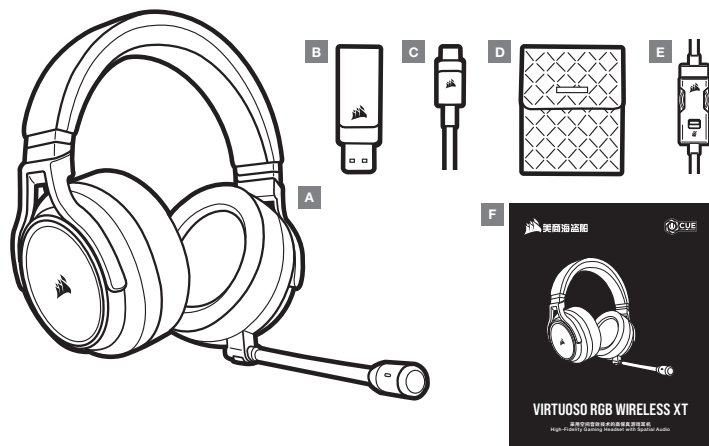
采用空间音效技术的高保真游戏耳机  
High-Fidelity Gaming Headset with Spatial Audio



简体中文 ..... 1

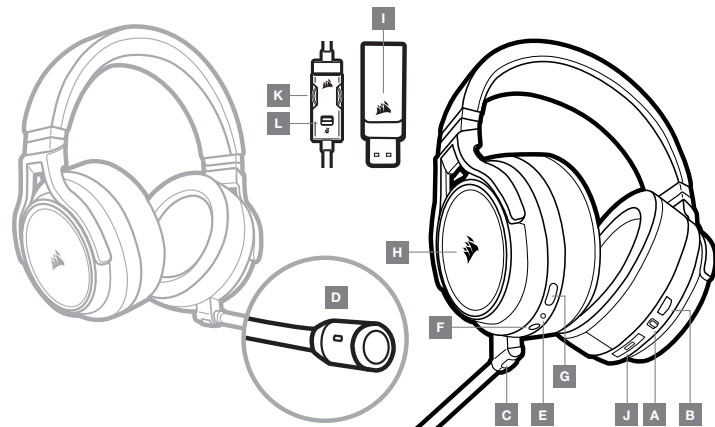
ENGLISH ..... 6

## 包装内容物部分



- A — 美商海盗船 VIRTUOSO RGB WIRELESS XT 耳机  
 B — 无线 USB 发射器  
 C — USB 充电线  
 D — 收纳袋  
 E — 3.5mm 线控  
 F — 快速入门指南

## 控件和功能部分



- A — 无线/有线模式切换开关  
 B — 音量控制  
 C — 麦克风静音按钮  
 D — 麦克风状态 LED 指示灯  
 E — 耳机状态 LED 指示灯 (电池/充电)  
 F — 3.5mm 耳机输入插孔  
 G — 充电端口  
 H — RGB LED 灯  
 I — 配对状态 LED 指示灯 (无线 USB 发射器)  
 J — 蓝牙多功能按钮 (MFB) 和状态 LED 指示灯  
 K — 音量控制  
 L — 麦克风静音

## 开始使用美商海盗船 VIRTUOSO RGB WIRELESS XT 耳机

### 有线模式

有线模式有两种连接方式，即USB连接和3.5mm接口连接。要启用有线模式，请将无线/有线模式操作选择器移动到“有线”位置。使用PC上的USB连接，可实现高清音频再现（高达24bit/96kHz音频）。3.5mm模拟连接兼容于大多数移动设备。使用3.5mm线控来连接移动设备或游戏主机手柄，以便获得更出色的性能，同时还能实现音量和静音控制。“有线”位置通常用于在没有进行充电或没有无线连接时关闭耳机。

### 无线模式

#### PC

要启用无线模式，请将无线/有线模式切换开关切换到“无线”位置。将无线 USB 发射器连接到 PC 上的任意 USB (type-A) 端口。耳机最多可在与发射器相距 60 英尺 (18.2 米) 的范围内工作，但其他无线设备、电子设备及其他障碍 (例如墙) 可能会影响耳机的性能。如果耳机设置为此模式，但未使用，耳机将在 10 分钟后自动休眠，以节省电池电量。耳机将在恢复使用时自动唤醒。

**重要提示:** 首次在 PC 上使用美商海盗船 VIRTUOSO RGB WIRELESS XT 耳机发射器时，操作系统将自动安装设备驱动程序。我们建议在设备驱动程序加载后重新启动 PC，然后再开始使用耳机。

#### iCUE

- 前往 [corsair.com/support/downloads](https://corsair.com/support/downloads) 下载 iCUE 软件。
- 使用 iCUE 软件可启用耳机的全套功能。
- 注意：如果不使用软件的情况下使用耳机，某些功能将禁用。
- > 在运行 Windows 10 或更高版本的 PC 上安装 iCUE 软件。
- > 安装完成后，重新启动 PC，然后启动 iCUE。



iCUE 软件可用于：

- > 选择 RGB LED 颜色偏好。
- > 选择和自定义音频均衡器 (EQ) 设置。
- > 调节麦克风输入音量和麦克风侧音。

软件随附的文档更详细地介绍了如何使用耳机的功能。

### 无线模式 (PLAYSTATION)

将无线 USB 发射器连接到 PS4 或 PS5 主机上的任意 USB 端口。在 PlayStation 界面上，将“Output to Headphones” (输出到耳机) 设置为“All Audio” (所有音频)。将音量控制 (耳机) 调整到高。然后再用耳机音量控制整音量。

美商海盗船 VIRTUOSO RGB WIRELESS XT 耳机必须在首次使用前完全充满电。

- > 将 USB 充电线连接到 PC 上可正常工作的任意 USB 端口，另一端连接到耳机上的 USB (type-C) 充电端口。
- 美商海盗船 VIRTUOSO RGB WIRELESS XT 耳机电池没有“记忆效应”，因此无需在再次充电前彻底耗尽电量。请记住，USB 充电线需要使用高功率 (USB 2.0 或更高) 端口。

### 电池状态 LED 指示灯 (耳机上)

电量低	电量中	电量高
红色	橙色	绿色

LED 指示灯将在充电时闪烁，并在充满电时呈绿色持续亮起。未充电时，LED 指示灯将按以上所示电池电量颜色闪烁。

### 无线状态 LED 指示灯 (无线 USB 发射器)

- > 如果发射器连接到耳机并运行正常，则 LED 指示灯将呈白色持续亮起。
  - > 如果发射器无法连接到耳机，则 LED 指示灯将呈红色快速闪烁。
  - > 如果耳机和发射器均已开启，但是 LED 指示灯依旧呈红色闪烁，请使用 iCUE 软件重新对发射器和耳机进行配对。
- 前往 [corsair.com/support/downloads](https://corsair.com/support/downloads) 下载新版的 iCUE 软件。

### 麦克风控制

- > 短按 (0.1 秒 -1 秒) 麦克风静音按钮开启 (麦克风状态 LED 指示灯将变红) 和关闭静音。
- > 长按 (2 秒 -4 秒) 麦克风静音按钮开启和关闭侧音。

**注意:** iCUE 软件也可用于控制这些功能。

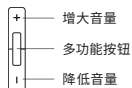
## PACKAGE CONTENTS SECTION

## 蓝牙模式

> 要打开蓝牙模式, 请按住 MFB 按钮 3-5 秒。MFB LED 指示灯将呈红色双闪, 直到耳机完成配对。要启用配对, 请按住 MFB 按钮直到 LED 指示灯呈红色和蓝色交替闪烁。耳机配对后, MFB LED 指示灯将呈蓝色闪烁。

> 要关闭蓝牙模式, 请按住 MFB 按钮 3-5 秒。MFB LED 指示灯将关闭。

断开连接	正在配对	已连接
双闪 (红光)	交替闪烁 (红光和蓝光)	单次闪烁 (蓝光)



## 接听和挂断电话

> 要接听来电, 请按一下 MFB 按钮。要挂断电话, 请再按一下 MFB 按钮。

## 聆听音乐 (媒体播放)

> 要播放歌曲, 请按一下 MFB 按钮。要暂停播放, 请再按一下 MFB 按钮。要快进, 请快速按两下 MFB 按钮。要后退, 请快速按三下 MFB 按钮。

## 蓝牙音量控制

> 使用 MFB 按钮旁边的“+”和“-”按钮来增大音量(+)或降低音量(-)。

## 为了获得更好的无线性能

> 请将无线适配器放置在无障碍的开阔区域。

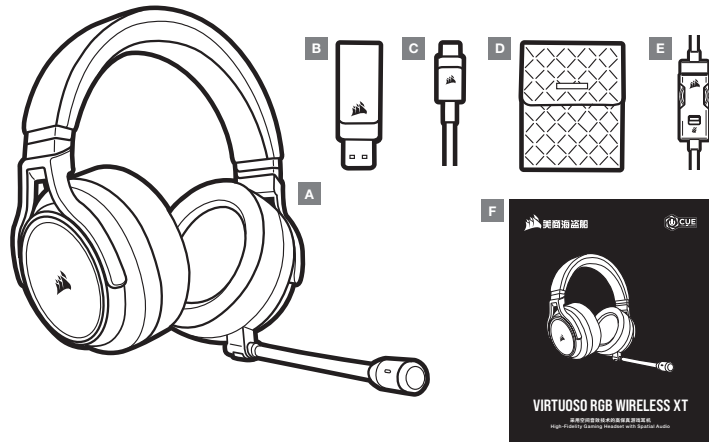
> 确保在首次使用之前给电池充满电。

> 不要让电池长期保持完全放电状态。使电池保持留有部分电量可极大地延长电池续航时间。

> 如果 RGB 照明效果对您不重要, 则可以通过 ICUE 禁用, 以延长电池使用时间。

> 将耳机放置在室温环境中 (20-30°C 或 68-86°F)。

注意: 长时间以高音量听东西可能会损害听力。应每隔一段时间休息一下, 而且刚开始时应尽可能将音量调至极低, 然后再调高。



A — CORSAIR VIRTUOSO RGB WIRELESS XT headset

B — Wireless USB transmitter

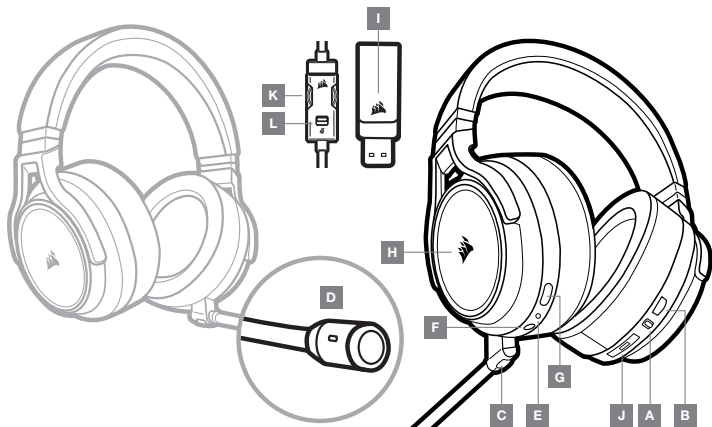
C — USB charging cable

D — Storage pouch

E — 3.5mm inline controller

F — Quick start guide

## CONTROLS AND FEATURES SECTION



A — Wireless/Wired mode operation selector

B — Volume control

C — Microphone mute button

D — Microphone status LED

E — Headset status LED (battery/charge)

F — 3.5mm analog input jack

G — Charging port

H — RGB LED light

I — Pairing status LED (Wireless USB transmitter)

J — Bluetooth multi-function button (MFB) and status LED

K — Volume control

L — Mic mute

## GETTING STARTED WITH YOUR CORSAIR VIRTUOSO RGB WIRELESS XT HEADSET

### WIRED MODE

Wired mode has two connection options, USB and 3.5mm. To enable wired mode, move the Wireless/Wired mode operation selector to the “Wired” position. Use the USB connection on PC for the highest quality audio reproduction (up to 24bit/96kHz audio). The 3.5mm analog connection allows compatibility with most mobile devices. Use the included 3.5mm inline controller to connect to mobile device or console controllers for optimal performance and volume and mute control. The “wired” position is also used to turn the headset off when not charging or connecting wirelessly.

### WIRELESS MODE

#### PC

To enable wireless mode, move the Wireless/Wired mode operation selector to the “Wireless” position. Connect the wireless USB transmitter to any USB (type-A) port on your PC. The headset is designed to operate at a range of up to 60 feet (18.2m) from the transmitter, but other wireless devices, electronics and obstructions such as walls may impact performance. When the headset is set to this mode and not being used, the headset will automatically go to sleep after 10 minutes to conserve battery life. It will automatically wake up when picked back up.

**IMPORTANT:** The first time you use the CORSAIR VIRTUOSO RGB WIRELESS XT Headset transmitter on a PC, the operating system will automatically install the device driver. After the device driver loads, we recommend you reboot your PC before use.

#### iCUE

Go to [corsair.com/support/downloads](https://corsair.com/support/downloads) to download the iCUE software.

Using the iCUE software will enable the full feature set of your headset.

Note: if the headset is used without software, some features will be disabled.

> Install the iCUE software on a PC running Windows 10 or later.

> After installation is complete, reboot your PC, and launch iCUE.

iCUE software can be used to:

> Choose your RGB LED color preference.

> Select and customize audio equalizer (EQ) settings.

> Adjust microphone input volume, and microphone sidetone.

The software's built-in documentation explains how to use the headset's features in greater detail.



## WIRELESS MODE (PLAYSTATION)

Connect the wireless USB transmitter to any USB port on your PS4 or PS5 console. Use the PlayStation UI to set "Output to Headphones" to "All Audio".

Adjust volume control (Headphones) to maximum level. Then adjust volume with the headset volume control.

The CORSAIR VIRTUOSO RGB WIRELESS XT headset must be fully charged before its first use.

> Connect the USB charging cable to any working USB (type-A) port on your PC and the opposite end to the USB (type-C) charging port on the headset.

The CORSAIR VIRTUOSO RGB WIRELESS XT headset battery has no "memory effect", so there is no need to completely discharge it before recharging. Remember that the USB charging cable requires a high power (USB 2.0 or higher) port.

## BATTERY STATUS LED INDICATIONS (ON HEADSET)

LOW	MEDIUM	HIGH
RED	ORANGE	GREEN

LED will pulse while being charged and turn solid green at full charge. When not being charged, LED will blink based on power levels shown above.

## WIRELESS STATUS LED INDICATIONS (ON WIRELESS USB TRANSMITTER)

- > When the transmitter is connected to the headset and operating normally, LED will turn solid white.
- > If the transmitter cannot connect to the headset, LED will blink red rapidly.
- > If headset is turned on and the transmitter is powered on and LED is still blinking red, please use iCUE software to re-pair the transmitter to the headset.

Go to [corsair.com/support/downloads](https://corsair.com/support/downloads) to download the latest version of the iCUE software.

## MICROPHONE CONTROL

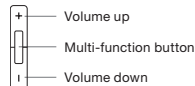
- > Short key press (0.1-1 seconds) on mic mute button toggles mute on (microphone status LED will turn RED) and off.
- > Long key press (2-4 seconds) on mic mute button toggles sidetone on and off.

**NOTE:** iCUE software can also be used to control these features.

## BLUETOOTH MODE

- > To power on Bluetooth mode, press and hold the MFB for 3-5 seconds. The MFB LED will double blink red until the headset is paired. To enable pairing, press and hold the MFB until the LED blinks red and blue. When the headset is paired, the MFB LED will blink blue.
- > To power off Bluetooth mode, press and hold the MFB for 3-5 seconds. The MFB LED will turn off.

DISCONNECTED	PAIRING	CONNECTED
DOUBLE BLINK (RED)	ALTERNATING BLINK (RED & BLUE)	SINGLE BLINK (BLUE)



## ANSWERING AND ENDING PHONE CALLS

- > To answer an incoming call, single press the MFB. To end the call, single press the MFB button again.

## LISTENING TO MUSIC (MEDIA PLAYBACK)

- > To play a track, single press the MFB. To pause playback, single press the MFB again. To skip forward, press the MFB button twice quickly. To skip backward, press the MFB button three times quickly.

## BLUETOOTH VOLUME CONTROL

- > Use the + and - buttons next to the MFB to adjust volume up (+) or down (-).

## FOR OPTIMAL WIRELESS PERFORMANCE

- > Place the wireless adapter in an open, unobstructed area.
- > Make sure the battery is fully charged before initial use.
- > Do not leave the battery fully discharged for long periods. Battery life is maximized by keeping the battery in a partially charged state.
- > If RGB lighting effects are unimportant to you, they can be disabled with iCUE to extend battery life.
- > Keep the headset at room temperature (20-30°C or 68-86°F).

**NOTE:** Prolonged listening at high volumes may adversely affect your hearing. Take breaks between sessions and always begin with the volume at the lowest possible level before increasing.

Manufactured under license from Dolby Laboratories. Dolby, Dolby Atmos and the double-D symbol are trademarks of Dolby Laboratories Licensing Corporation.



