



## Product 215780



**215780 MultiStand** MultiStand support leg, for larger surfpads. Length: 120 mm. Mounting Adapter and Screws Included. Black.

This support leg is to be used then you want to convert your current holder into a MultiStand. Easily change the existing tilt swivel to the support leg instead and you will have a completely new holder!

When using a MultiStand it is easier to carry the surfpad around with you. Convenient to use anywhere at home, in the car or in the office. Diminishes the risk to drop the device, since the stand is easier to grip than the device itself. You can use the stand in several angles, just adjust the position depending on area of use. Also adapted for use in the lap. Made of black ABS plastic.

You can attach the stand onto a wall, or any other place, by using the enclosed mounting adapter. If you want to be able to attach the stand onto more than one place, you can buy several mounting adapters (see item no 215461).

The support leg is 120 mm long and fits best with larger surfpads.

Tablets should not be installed onto a car's dashboard. The ProClip is designed for installation of smaller devices (phones), not for large devices (tablets). If you want to place a tablet onto the car's dashboard, each combination of tablet-car must be examined in detail by you in order to determine if such an installation is possible in the specific case. Consideration should be given to the position and how firmly the ProClip is in place, as well as the size of the tablet you wish to use. Brodit will not give any recommendations for such installations. An installation of a tablet onto a vehicle's dashboard is always done on the customer's own responsibility. Brodit recommends to use tablets on the car's headrest, installed onto a Brodit headrest mount.

MultiStand film!

EAN: 7320282157807

**Item no 215780 fits:**

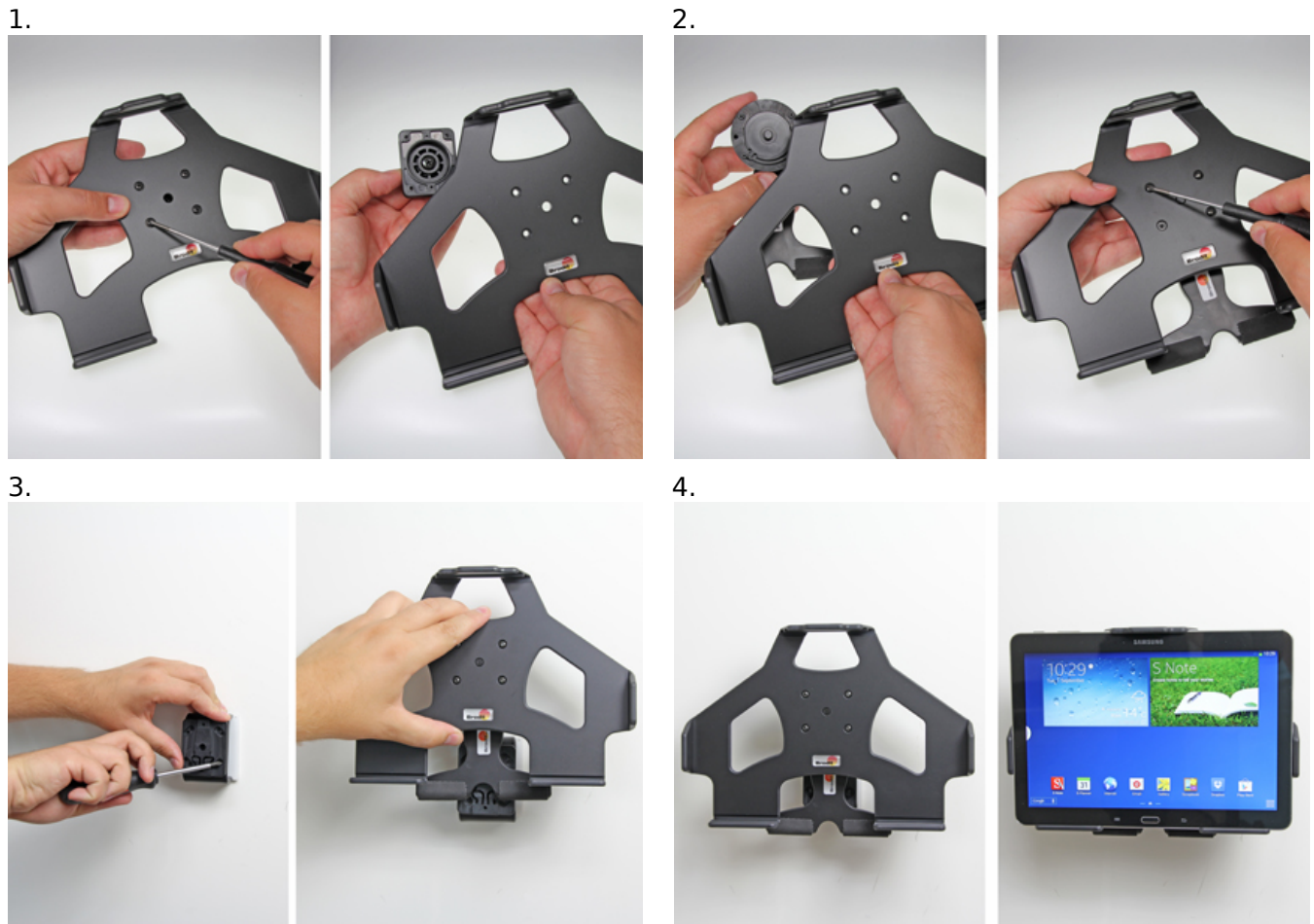
, , (For all countries)

Apple iPad 1 (For all countries)

Apple iPad 2 (For all countries)

Apple iPad Air (For all countries)  
Apple iPad Air 2 (For all countries)  
Apple iPad New (3rd Gen) (For all countries)  
Apple iPad New 4th Gen (For all countries)  
Apple iPad New with Retina (Lightning Connector) (For all countries)  
Apple iPad Pro 12.9 (For all countries)  
Apple iPad Pro 9.7 (For all countries)  
Asus Eee Pad Transformer TF101 (For all countries)  
Dell Latitude 10 - ST2 (For all countries)  
Dell Latitude ST 10,1" (For all countries)  
Dell Venue 11 Pro (Model 5130) (For all countries)  
Dell Venue 11 Pro, New (Model 7140) (For all countries)  
Dell Venue 8 Pro (For all countries)  
Dell Venue 8 Pro NEW (Model 5855) (For all countries)  
HP ElitePad 1000 10.1 (For all countries)  
HP ElitePad 900 10.1 (For all countries)  
Microsoft Surface (For all countries)  
Microsoft Surface 2 (For all countries)  
Microsoft Surface 3 (For all countries)  
Microsoft Surface PRO (For all countries)  
Microsoft Surface Pro 2 (For all countries)  
Microsoft Surface Pro 3 (For all countries)  
Motorola ET1 (For all countries)  
Motorola Xoom (For all countries)  
Paddytek Paddy-T V2 (For all countries)  
Panasonic Toughpad FZ-A1 (For all countries)  
Panasonic Toughpad FZ-G1 (For all countries)  
Samsung Galaxy Note 10.1 (2014 Edition) SM-P6000 (For all countries)  
Samsung Galaxy Note 10.1 (2014 Edition) SM-P6050 (For all countries)  
Samsung Galaxy Note 10.1 GT-N8000 (For all countries)  
Samsung Galaxy Note 10.1 GT-N8020 (For all countries)  
Samsung Galaxy Note PRO 12.2 4G SM-P905 (For all countries)  
Samsung Galaxy Note PRO 12.2 Wi-Fi SM-P900 (For all countries)  
Samsung Galaxy Tab 10.1 GT-P7500 (For all countries)  
Samsung Galaxy Tab 10.1 SCH-I905 (For USA)  
Samsung Galaxy Tab 2 10.1 (For all countries)  
Samsung Galaxy Tab 3 10.1 GT-P5200 (For all countries)  
Samsung Galaxy Tab 3 10.1 GT-P5210 (For all countries)  
Samsung Galaxy Tab 3 10.1 GT-P5220 (For all countries)  
Samsung Galaxy Tab 4 10.1 SM-T530 (For all countries)  
Samsung Galaxy Tab 4 10.1 SM-T531 (For all countries)  
Samsung Galaxy Tab 4 10.1 SM-T535 (For all countries)  
Samsung Galaxy Tab A 10.1 (2016) (For all countries)  
Samsung Galaxy Tab A 9.7 (For all countries)  
Samsung Galaxy Tab E 9.6 (For all countries)  
Samsung Galaxy Tab PRO 10.1 LTE SM-T525 (For all countries)  
Samsung Galaxy Tab PRO 10.1 SM-T520 (For all countries)  
Samsung Galaxy Tab PRO 12.2 4G SM-T905 (For all countries)  
Samsung Galaxy Tab PRO 12.2 Wi-Fi SM-T900 (For all countries)  
Samsung Galaxy Tab S 10.5 SM-T800 (For all countries)  
Samsung Galaxy Tab S 10.5 SM-T805 (For all countries)  
Samsung Galaxy Tab S2 9.7 (For all countries)  
Sony Xperia Z3 Tablet Compact (For all countries)  
Sony Xperia Z4 Tablet (For all countries)  
Zebra ET50 10.1 (For all countries)  
Zebra ET55 10.1 (For all countries)

## INSTALLATION INSTRUCTIONS



Please read all of the instructions and look at the pictures before attaching the holder.

1. Remove the tilt swivel from the holder by loosening the screws on the front of the holder.
  2. Place the MultiStand support leg so it fits with the holes that used to hold the tilt swivel into place. Fasten the MultiStand support leg using the enclosed screws.
  3. To install the multi stand: Press the mounting adapter on the back side of the holder downward, so it slides out from the groove. Place the mounting adapter into desired position and screw it into place with the enclosed screws. Place the holder above the mounting adapter and press it downward so the mounting adapter fits into the groove. Press until you hear/feel it snaps into place. To remove the holder: Pull the holder straight upward, away from the mounting adapter.
  4. The holder is in place in horizontal position.
-