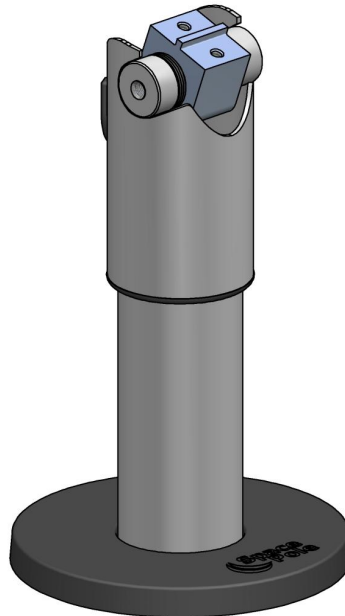


## Project Configuration Sheet – DTP101-nn

### SP1 DuraTilt™ with Pole Mount Version 1.1



#### Parts List

Part No.	Description	Qty	Assemble	Box
1101-0120	120mm SpacePole with flange and 210° 7mm rotation slot	1		1
7501	DuraTilt™ tilting joint with anti wobble sleeve (P22116), M6/6mm hex screw (M9936-0606), cable grommet (P22610) and SpacePole sticker (MK15-0007)	1		1
P22505	Plastic flange cover	1		1

#### Fixings

	Description	Qty	Box
MK10-0001	10 x 5/8 self tapping screws 4mm Allen Key	4 1	1 1

#### Install Instructions

MK15-0016

#### Box

Box B012 with DuraTilt™ in Box B010  
36 x B012 packed in Master Box B014

#### Box Label

MK15-0021 – SP1 DuraTilt™-nn – SP1 DuraTilt™ Pole Mount  
MK15-0021 –DTP101-nn – SP1 DuraTilt™ with 120mm Pole – V 1.1  
MK15-0001 – 36 x DTP101-nn – SP1 DuraTilt™ with 120mm Pole V 1.1

**Security Seal** MK15-0002

Colour	<nn>	
	01	Light Grey
	02	Black
	03	Silver
	04	Pearl
	05	Iron Grey