



Indoor Mini Dome & Indoor Mini Fisheye Dome Hardware Manual

**D91, D92, E91, E92, E93, E94, E95, E96,
E97, E98, E911, E912, E913, E914**

Ver. 2017/11/27



ACTi
Connecting Vision

Table of Contents

Precautions **4**

Safety Instructions	6
----------------------------------	----------

Introduction **7**

List of Models.....	7
Package Contents.....	9
Physical Description	10

Installation Procedures **12**

Installing the Camera on a Surface	13
Installing the Camera on a Gang Box	16
Step 1: Install the Gang Box	17
Step 2: Install the Gang Box Converter	18
Step 3: Connect the Cable	19
Step 4: Install the Camera.....	19
Step 5: Connect to Network	20
Step 6: Access the Camera Live View	20
Step 7: Adjust the Viewing Angle and Focus.....	20
Step 8: Close the Dome Cover	20
Basic Connections	21

Other Adjustments and Accessories **22**

How to Adjust the Viewing Angle and Focus	22
How to Rotate the Viewing Orientation (E96 / E98).....	24
How to Replace the Dome Cover.....	25
How to Replace the Lens (D91 / D92 only).....	27

Accessing the Camera **30**

Configure the IP Addresses	30
---	-----------

Using DHCP Server to Assign IP Addresses..... 30
Using the Default Camera IP Address..... 32
Access the Camera..... 34

Precautions

Read these instructions

You should read all the safety and operating instructions before using this product.

Heed all warnings

You must adhere to all the warnings on the product and in the instruction manual. Failure to follow the safety instruction given may directly endanger people, cause damage to the system or to other equipment.

Servicing

Do not attempt to service this video device yourself as opening or removing covers may expose you to dangerous voltage or other hazards. Refer all servicing to qualified service personnel.

Trademarks

All names used in this manual are probably registered trademarks of respective companies.

Liability

Every reasonable care has been taken during the writing of this manual. Please inform your local office if you find any inaccuracies or omissions. We cannot be held responsible for any typographical or technical errors and reserve the right to make changes to the product and manuals without prior notice.

Federal Communications Commission Statement



This equipment has been tested and found to comply with the limits for a class B digital device, pursuant to Part 15 of the FCC Rules. These limits are designed to provide reasonable protection against harmful interference in a residential installation. This equipment generates, uses, and can radiate radio frequency energy and, if not installed and used in accordance with the instructions, may cause harmful interference to radio communications. However, there is no guarantee that interference will not occur in a particular installation. If this equipment does cause harmful interference to radio or television reception, which can be determined by turning the equipment off and on, the user is encouraged to try to correct the interference by one or more of the following measures:

- Reorient or relocate the receiving antenna.
- Increase the separation between the equipment and receiver.
- Connect the equipment into an outlet on a circuit different from that to which the receiver is connected.
- Consult the dealer or an experienced radio/TV technician for help.

Warning: Changes or modifications to the equipment that are not expressly approved by the responsible party for compliance could void the user's authority to operate the equipment.

European Community Compliance Statement



This product has been tested and found to comply with the limits for Class B Information Technology Equipment according to European Standard EN 55022 and EN 55024. In a domestic environment, this product may cause radio interference in which cause the user may be required to take adequate measures.

Safety Instructions

Cleaning

Disconnect this video product from the power supply before cleaning.

Attachments

Do not use attachments not recommended by the video product manufacturer as they may cause hazards.

Water and Moisture

Do not use this video product near water, for example, near a bathtub, washbowl, kitchen sink, or laundry tub, in a wet basement, or near a swimming pool and the like.

Don't use accessories not recommended by the manufacturer

Only install this device in a dry place protected from weather

Servicing

Do not attempt to service this video product yourself as opening or removing covers may expose you to dangerous voltage or other hazards. Refer all servicing to qualified service personnel.

Damage Requiring service

Disconnect this video product from the power supply immediately and refer servicing to qualified service personnel under the following conditions.

- 1) When the power-supply cord or plug is damaged
- 2) If liquid has been spilled, or objects have fallen into the video product.
- 3) If the video product has been directly exposed to rain or water.
- 4) If the video product does not operate normally by following the operating Instructions in this manual. Adjust only those controls that are covered by the instruction manual, as an improper adjustment of other controls may result in damage, and will often require extensive work by a qualified technician to restore the video product to its normal operation.











Safety Check





Upon completion of any service or repairs to this video product, ask the service technician to perform safety checks to determine if the video product is in proper operating condition.

Introduction

List of Models

This hardware manual contains the following models:

D91		1MP Indoor Mini Dome with Fixed lens
D92		3MP Indoor Mini Dome with Fixed lens
E91		1MP Indoor Mini Dome with Basic WDR, Fixed lens
E92		3MP Indoor Mini Dome with Basic WDR, Fixed lens
E93		5MP Indoor Mini Dome with Basic WDR, Fixed lens
E94		1.3MP Indoor Mini Dome with Basic WDR, SLLS, Fixed lens
E95		2MP Indoor Mini Dome with Basic WDR, SLLS, Fixed lens
E96		5MP Indoor Mini Fisheye Dome with Basic WDR, Fixed lens
E97		10MP Indoor Mini Dome with Basic WDR, Fixed lens
E98		10MP Indoor Mini Fisheye Dome with Basic WDR, Fixed lens

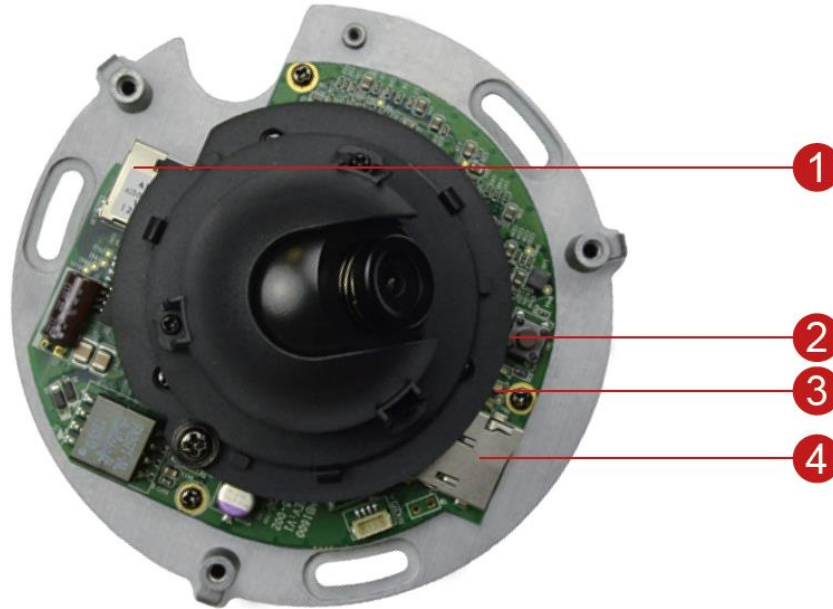
E911		3MP Video Analytics Indoor Mini Dome with Extreme WDR, SLLS, Fixed lens
E912		5MP Video Analytics Indoor Mini Dome with Extreme WDR, SLLS, Fixed lens
E913		3MP Indoor Mini Dome with Superior WDR, Fixed lens
E914		5MP Video Analytics Indoor Mini Fisheye Dome with Extreme WDR, SLLS, Fixed lens

Package Contents

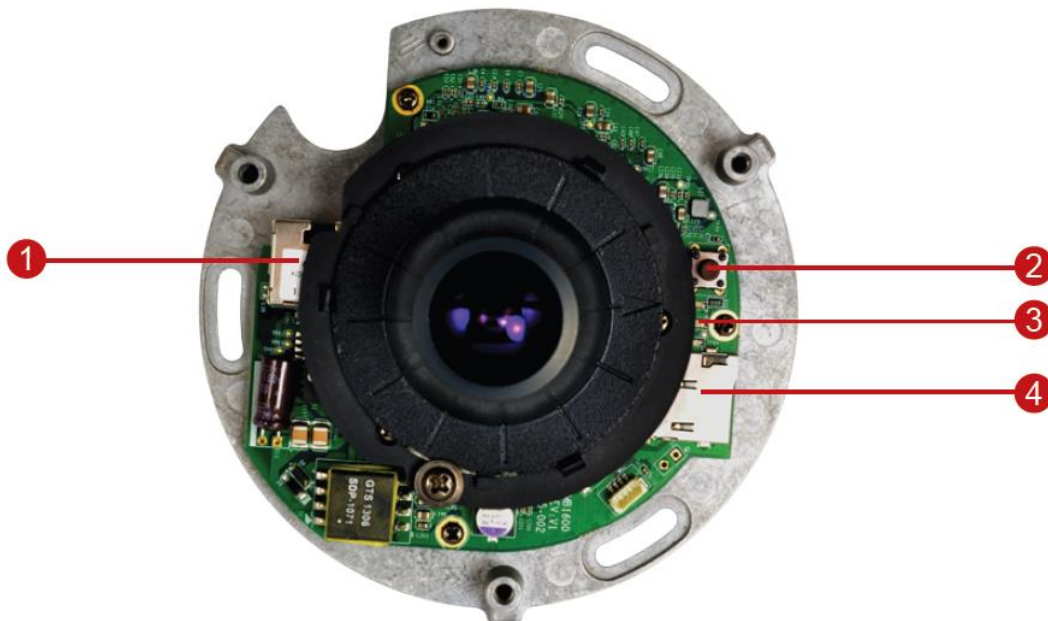
<p>Camera (Mini Dome)</p>	<p>Camera (Mini Fisheye Dome)</p>
	<p style="text-align: center;">or</p> 
<p>Screw Kit</p>	<p>Drill Template</p>
	
<p>Hexagon Screwdriver</p>	<p>Lens Focus Tuner (Not available in E93, E96, E97, E912, E914 models)</p>
	
<p>Quick Installation Guide</p>	<p>Warranty Card</p>
	

Physical Description

Mini Dome / Mini Fisheye Dome



Mini Fisheye Dome



1) Ethernet Port

The Ethernet port connects to a network using an Ethernet cable.

2) Reset Button

The **Reset Button** is used to restore the factory default settings of the camera, including the administrator's password.

How to reset the camera?

While the power is on, press and hold the **Reset Button** for 5 seconds or until the **Blue LED** lights up.

3) LED Indicators

- **Blue LED:** The **Power LED** lights blue when the camera is powered on, the light goes off once the initial boot up process is complete.
- **Amber LED:** The **Ethernet Activity LED** blinks amber when network activity is in progress.
- **Green LED:** The **Ethernet Link LED** lights green when a network connection is established.

4) Memory Card Slot

Insert a memory card (not included) into this slot for local recording.

NOTE: Supports microSDHC and microSDXC cards.

How to install the memory card?

Insert the memory card into the slot with the metal contacts facing down, and then push the card until it clicks into place.

How to remove the memory card?

Access the Web Configurator to "safely unmount" the card (see the camera Firmware Manual for details). Once unmounted from the firmware, push the card to eject it from the slot.

Installation Procedures

Before mounting the camera, remove the dome cover by loosening the three (3) screws.



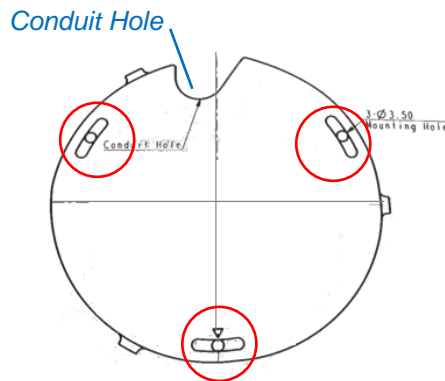
NOTE: Some models have styrofoam inside the dome cover which is used to protect the lens during shipping. Remember to remove the styrofoam before mounting the camera.

There are two ways to mount the camera:

- **Surface mount:** Use this method to mount the camera directly on the ceiling. See [Installing the Camera on a Surface](#) on page 13.
- **Gang Box Mount:** If the camera will be mounted on a gang box (applicable in some areas in the US), a gang box converter (not included in the camera package) is needed. See [Installing the Camera on a Gang Box](#) on page 16.

Installing the Camera on a Surface

1. Mark the location of the screw holes base on the drill template included in the package.

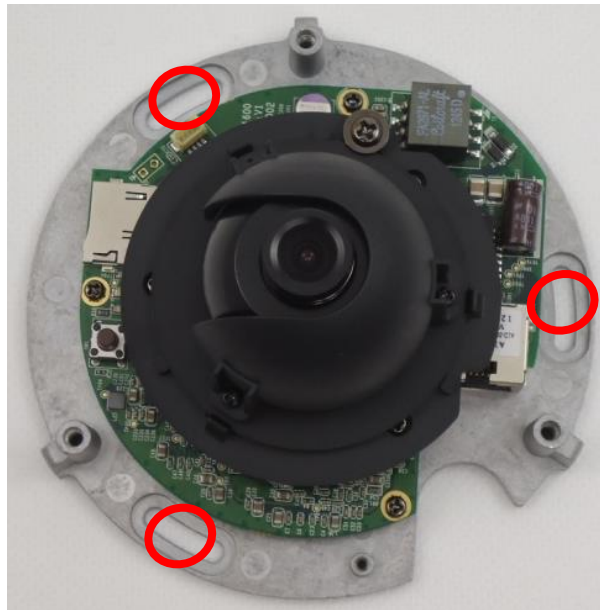


NOTE: Depending on the surface where you will install the camera, it may be necessary to drill three (3) holes with ϕ 3.5 on the ceiling and use the supplied screw to.

2. Route the cables through the ceiling, taking the Conduit Hole on the drilling template as a reference. Or, slide off the cable exit tab on the dome cover to route the cable through that hole later.



3. Use the camera body and locate the three (3) screw holes.



4. Install the camera body to the ceiling using the three (3) screws included in the camera package.



NOTE: Please make sure the screw is flat on the plate.

5. Connect the Ethernet cable to the Ethernet port of the camera.
6. Adjust the camera viewing angle and focus. See [How to Adjust the Viewing Angle](#) and [Focus](#) on page 22.


NOTE: Not applicable to E96 model.

7. Attach the cover to the camera body and tighten the three (3) screws to secure it.



Installing the Camera on a Gang Box

In case the camera has to be installed on a gang box, use the gang box converter below to install your camera.

Gang Box Converter	Description	Supported Gang Box
<p>PMAX-0805</p> 	<p>The gang box converter is installed onto the gang box which can either be on a surface or inside the surface. The camera can then be installed onto the gang box converter.</p>	<p>4" Round 4" Octagon</p>

NOTE: The gang box and the gang box converter are not included in the camera package.

Step 1: Install the Gang Box

Before installation, note that the gang box must be installed with either of the following orientation:



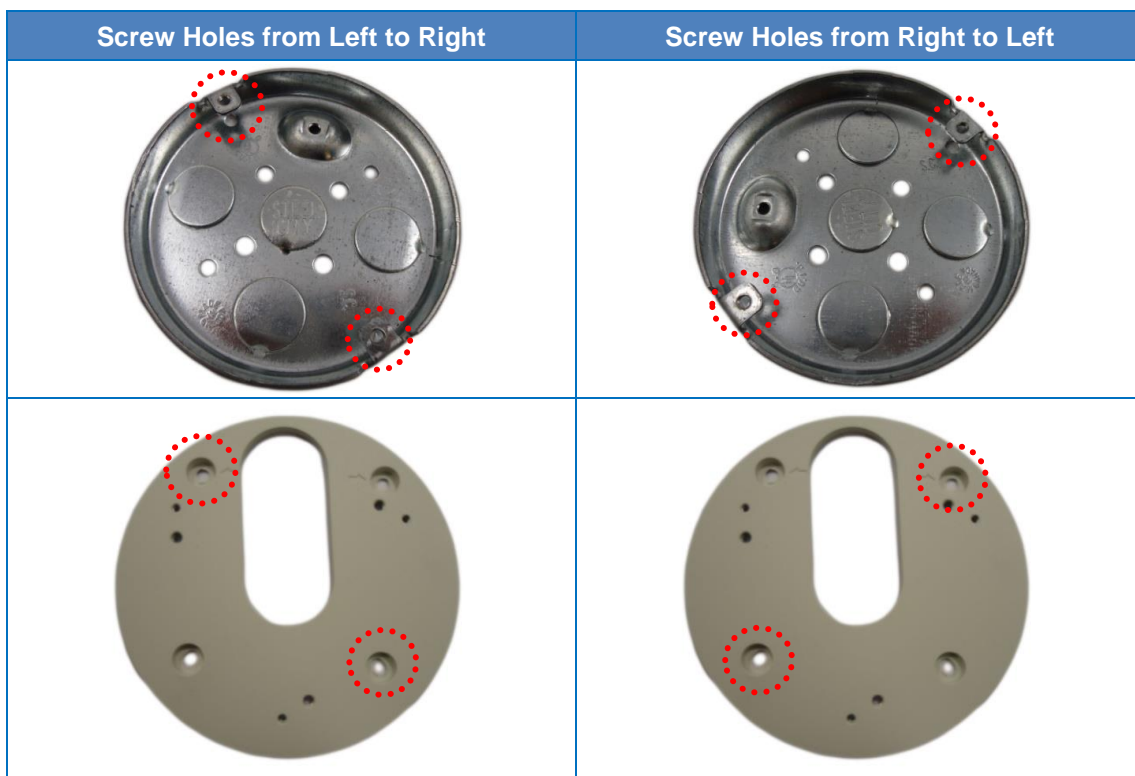
1. Remove a knockout on the gang box to route the network cable.
2. Route the network cable along the surface or inside the surface and into the gang box.
3. Attach the gang box on the surface or inside the surface according to the recommended orientation above.

Step 2: Install the Gang Box Converter

1. Route the network cable to pass through the hole of the gang box converter.



2. Install the gang box converter onto the gang box using the screws included in the gang box package. Note which screw holes to attach to secure the converter to the gang box.



NOTE: Same screw holes apply when using the 4" octagon gang boxes.

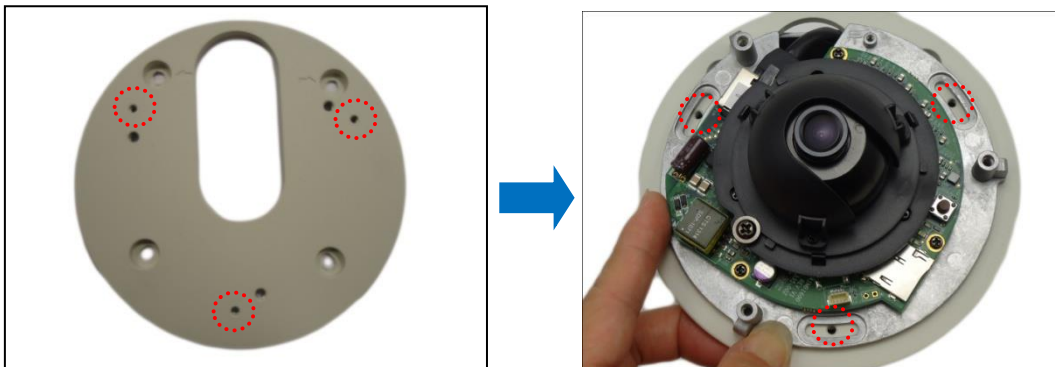
Step 3: Connect the Cable

Connect the network cable to the Ethernet port of the camera.



Step 4: Install the Camera

1. Align the camera screw holes to the screw holes of the gang box converter.



2. Attach the three (3) screws (included in the gang box converter package) to secure the camera to the converter.



Step 5: Connect to Network

On the network side, connect the other end of the network cable to a network switch. See [Basic Connections](#) on page 21 for more information.

Step 6: Access the Camera Live View

See [Accessing the Camera](#) on page 30 for more information on how to access the Live View of the camera.

Step 7: Adjust the Viewing Angle and Focus

Based on the Live View, adjust the viewing angle, focus, and orientation of the camera. Adjustments vary depending on model, see [How to Adjust the Viewing Angle and Focus](#) on page 22 or [How to Rotate the Viewing Orientation \(E96 / E98 / E914\)](#) on page 24 for more information.

Step 8: Close the Dome Cover

1. Align cable tab side of the dome cover to the direction of the network cable.
2. Tighten the three (3) screws using the supplied hex screwdriver to attach the dome cover.



Final installation should look similar to the illustration below.



Basic Connections

Follow the procedures below to connect the camera to the network.



Please use a PoE (Power over Ethernet) supported switch or injector:

- 1) Connect your IP Camera to the PoE Switch / Injector using an Ethernet cable.
- 2) Connect your PoE Switch / Injector to a PC / network using another Ethernet cable.

Other Adjustments and Accessories

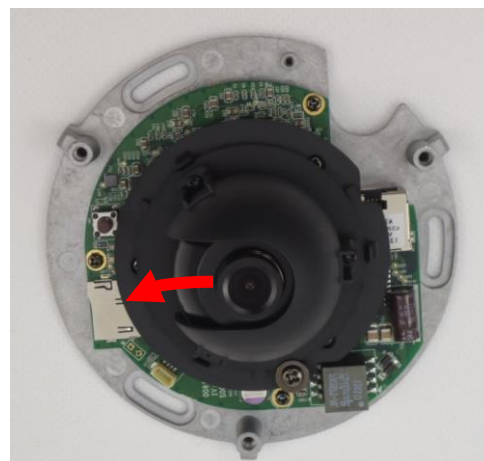
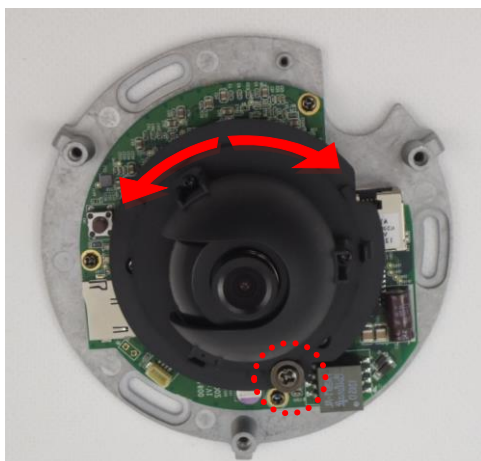
How to Adjust the Viewing Angle and Focus

NOTE: The following procedures are not applicable to Mini Fisheye Dome cameras.

1. Loosen the three (3) screws to remove the dome cover.



2. Based on the live view from the camera, adjust the viewing angle with pan and tilt direction (for Mini Dome models only).



3. Adjust the focus.

NOTE: Not applicable for E93 / E97 / E911 / E912 / E913 model because the camera is already pre-focused.

- a. Attach the focus tuner (included in the camera package) on the lens and adjust the focus of the lens.



- b. Remove the lens focus tuner.

4. Attach the dome cover to the camera and tighten the three (3) screws.



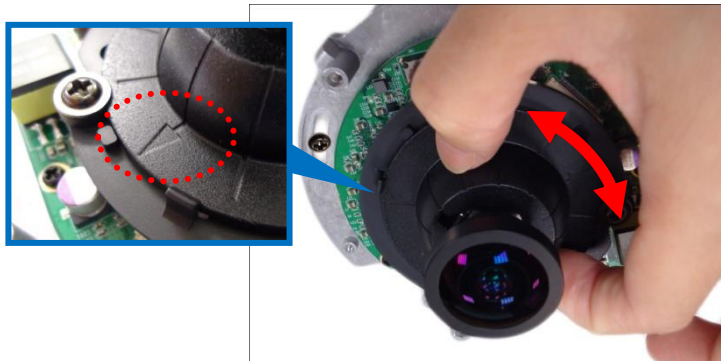
How to Rotate the Viewing Orientation (E96 / E98 / E914)

This section describes the procedures in rotating the viewing orientation of Mini Fisheye Dome cameras.

1. Open the dome cover.
2. Loosen the screw as marked below.



3. Turn the lens holder to rotate the viewing orientation. Note that the arrow indicates the viewing direction.



4. When the desired orientation is achieved, tighten the screw to fix the orientation position.



5. Close the dome cover.

How to Replace the Dome Cover

For more discrete surveillance needs, the pre-installed dome cover can be replaced with a smoked, non-vandal proof dome cover. The smoked dome cover is an optional accessory; contact your sales agent to purchase.

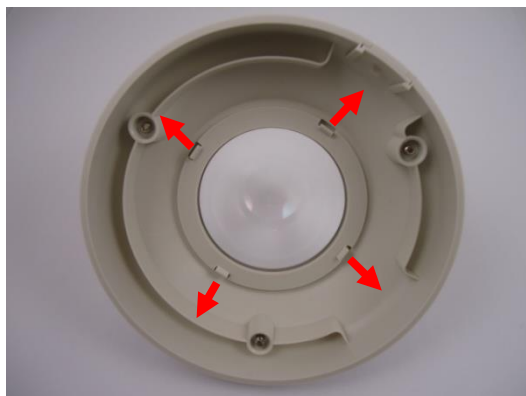
Optional Accessories	
PDCX-1106	

To replace the dome cover, follow the procedures below:

1. Loosen the three (3) screws to remove the dome cover.



2. Push the clips outwards to release the dome cover latches.



3. Remove the ring from the cover.



4. Insert ring to the new dome cover and latch it to the cover body.



How to Replace the Lens (D91 / D92 only)

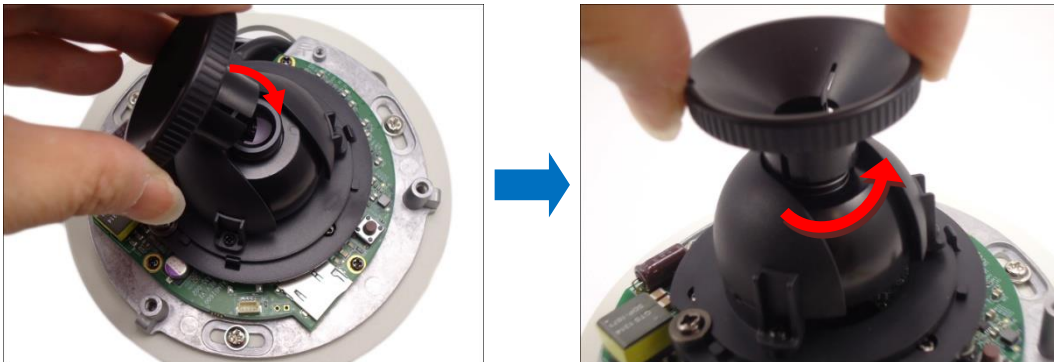
For wider viewing angle, the bundled lens can be replaced with the optional IR-compatible lens. Contact your sales agent to purchase.

To replace the lens, follow the procedures below:

1. Using the bundled hex screwdriver, loosen the three (3) screws to open the dome cover.



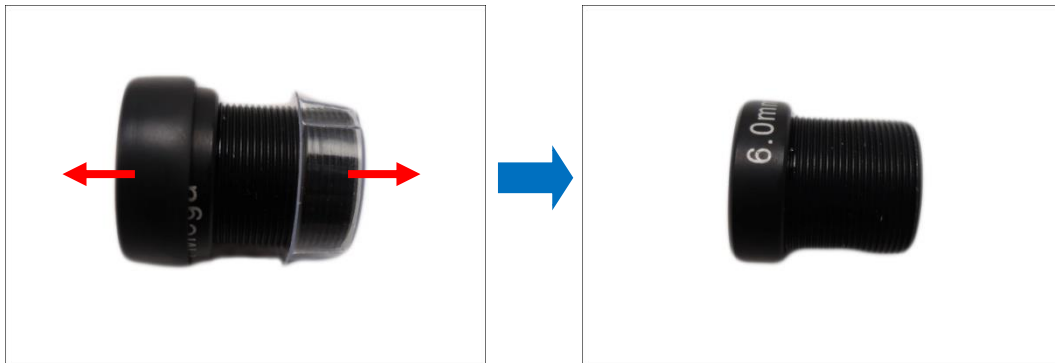
2. Attach the lens focus tuner to the lens and continuously rotate until the lens comes off.



3. When the lens comes off, remove the spring and remove the bundled lens from the lens focus tuner.



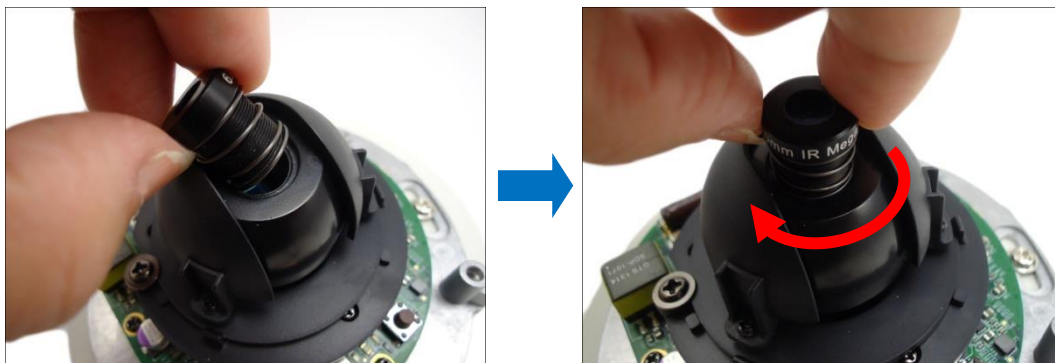
- Remove the transparent plastic from the replacement lens.



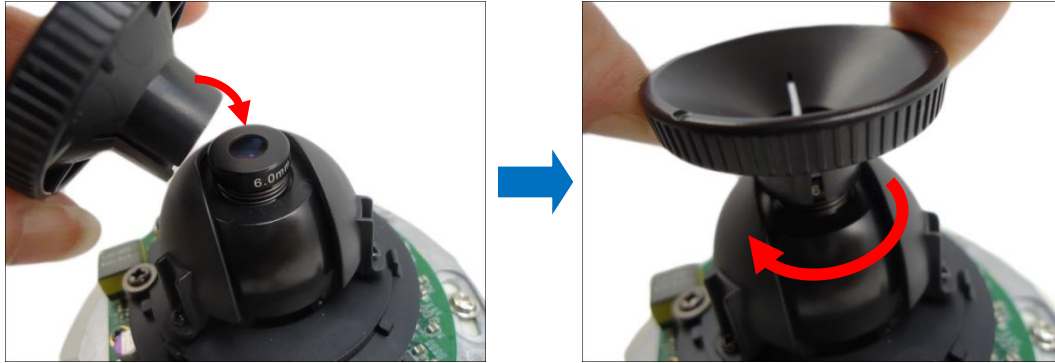
- Attach the spring to the replacement lens.



- Continuously rotate the replacement lens to attach it to the camera.



7. Attach the lens focus tuner when the tip of the lens is difficult to hold then turn it clockwise or counter-clockwise to adjust the camera focus. See [How to Adjust the Viewing Angle and Focus](#) on page 22 for more information.



8. Close the dome cover.

Accessing the Camera

Configure the IP Addresses

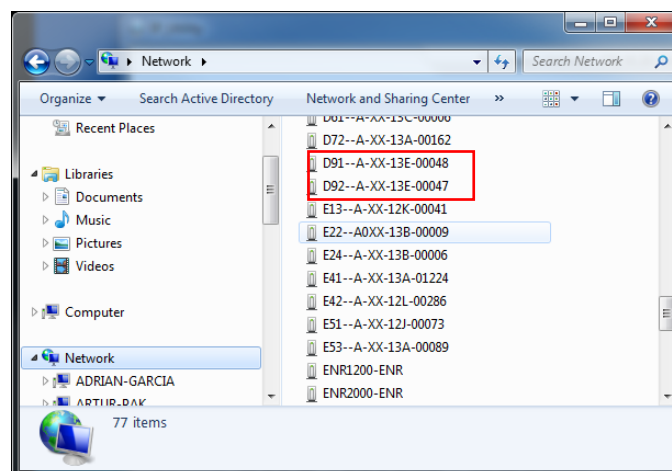
In order to be able to communicate with the camera from your PC, both the camera and the PC have to be within the same network segment. In most cases, it means that they both should have very similar IP addresses, where only the last number of the IP address is different from each other. There are 2 different approaches to IP Address management in Local Area Networks – by DHCP Server or Manually.

Using DHCP Server to Assign IP Addresses

If you have connected the computer and the camera into the network that has a DHCP server running, then you do not need to configure the IP addresses at all – both the camera and the PC would request a unique IP address from DHCP server automatically. In such case, the camera will immediately be ready for the access from the PC. The user, however, might not know the IP address of the camera yet. It is necessary to know the IP address of the camera in order to be able to access it by using a Web browser.

The quickest way to discover the cameras in the network is to use the simplest network search, built in the Windows system – just by pressing the “Network” icon, all the cameras of the local area network will be discovered by Windows thanks to the UPnP function support of our cameras.

In the example below, we successfully found the camera that we had just connected to the network.

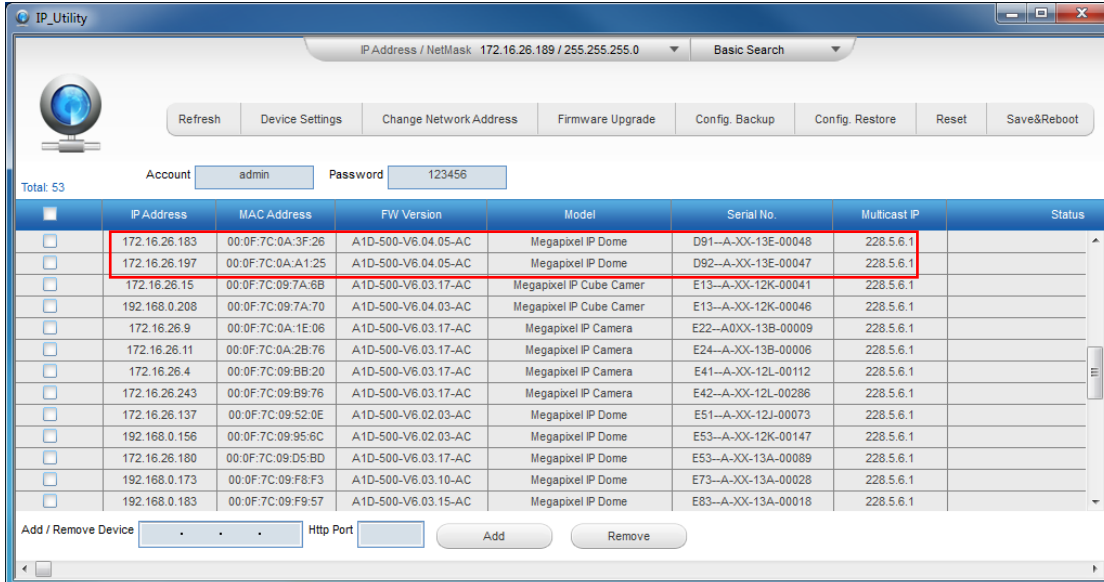


By double-clicking with the left mouse on the camera model, it is possible to automatically launch the default browser of the PC with the IP address of the target camera filled in the address bar of the browser already.

If you work with our cameras regularly, then **there is even a better way to discover the cameras in the network** – by using **IP Utility**. The IP Utility is a light software tool that can not only discover the cameras, but also list lots of valuable information, such as IP and MAC addresses, serial numbers, firmware versions, etc, and allows quick configuration of multiple devices at the same time.

The IP Utility can be downloaded for free from http://www.acti.com/IP_Utility

With just one click, you can launch the IP Utility and there will be an instant report as follows:



The screenshot shows the IP Utility application window. At the top, it displays the current IP address and NetMask (172.16.26.189 / 255.255.255.0) and a Basic Search dropdown. Below this are several action buttons: Refresh, Device Settings, Change Network Address, Firmware Upgrade, Config. Backup, Config. Restore, Reset, and Save&Reboot. There are also input fields for Account (admin) and Password (123456). The main area contains a table with 53 total devices. The table has the following columns: IP Address, MAC Address, FW Version, Model, Serial No., Multicast IP, and Status. The first three rows of the table are highlighted with a red border. At the bottom, there are fields for adding or removing devices, including an Http Port field and Add/Remove buttons.

IP Address	MAC Address	FW Version	Model	Serial No.	Multicast IP	Status
172.16.26.183	00:0F:7C:0A:3F:26	A1D-500-V6.04.05-AC	Megapixel IP Dome	D91--A-XX-13E-00048	228.5.6.1	
172.16.26.197	00:0F:7C:0A:A1:25	A1D-500-V6.04.05-AC	Megapixel IP Dome	D92--A-XX-13E-00047	228.5.6.1	
172.16.26.15	00:0F:7C:09:7A:6B	A1D-500-V6.03.17-AC	Megapixel IP Cube Camer	E13--A-XX-12K-00041	228.5.6.1	
192.168.0.208	00:0F:7C:09:7A:70	A1D-500-V6.04.03-AC	Megapixel IP Cube Camer	E13--A-XX-12K-00046	228.5.6.1	
172.16.26.9	00:0F:7C:0A:1E:06	A1D-500-V6.03.17-AC	Megapixel IP Camera	E22--A0XX-13B-00009	228.5.6.1	
172.16.26.11	00:0F:7C:0A:2B:76	A1D-500-V6.03.17-AC	Megapixel IP Camera	E24--A-XX-13B-00006	228.5.6.1	
172.16.26.4	00:0F:7C:09:BB:20	A1D-500-V6.03.17-AC	Megapixel IP Camera	E41--A-XX-12L-00112	228.5.6.1	
172.16.26.243	00:0F:7C:09:B9:76	A1D-500-V6.03.17-AC	Megapixel IP Camera	E42--A-XX-12L-00286	228.5.6.1	
172.16.26.137	00:0F:7C:09:52:0E	A1D-500-V6.02.03-AC	Megapixel IP Dome	E51--A-XX-12J-00073	228.5.6.1	
192.168.0.156	00:0F:7C:09:95:6C	A1D-500-V6.02.03-AC	Megapixel IP Dome	E53--A-XX-12K-00147	228.5.6.1	
172.16.26.180	00:0F:7C:09:D5:BD	A1D-500-V6.03.17-AC	Megapixel IP Dome	E53--A-XX-13A-00089	228.5.6.1	
192.168.0.173	00:0F:7C:09:F8:F3	A1D-500-V6.03.10-AC	Megapixel IP Dome	E73--A-XX-13A-00028	228.5.6.1	
192.168.0.183	00:0F:7C:09:F9:57	A1D-500-V6.03.15-AC	Megapixel IP Dome	E83--A-XX-13A-00018	228.5.6.1	

You can quickly see the camera model in the list. Click on the IP address to automatically launch the default browser of the PC with the IP address of the target camera filled in the address bar of the browser already.

Using the Default Camera IP Address

If there is no DHCP server in the given network, the user may have to assign the IP addresses to both PC and camera manually to make sure they are in the same network segment.

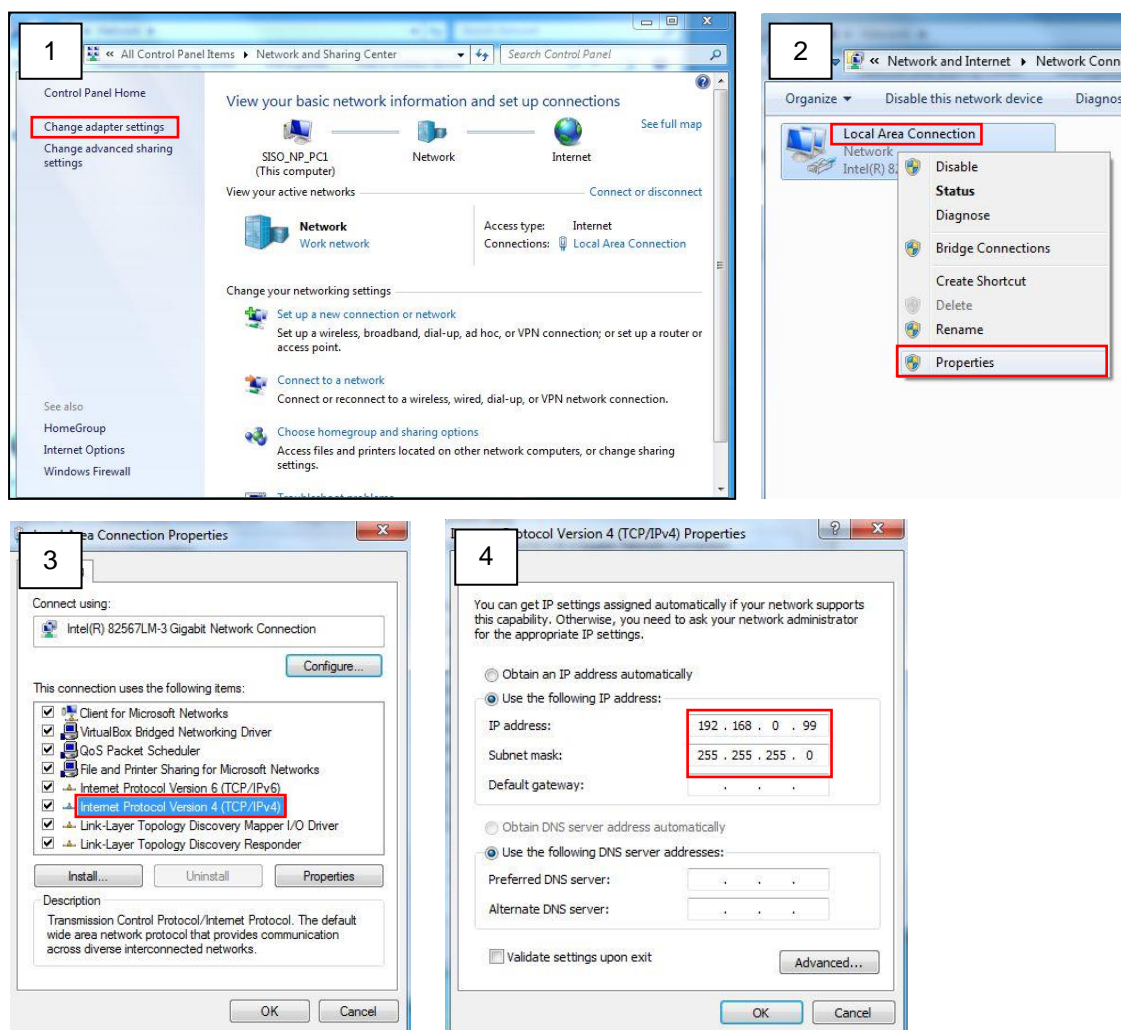
When the camera is plugged into network and it does not detect any DHCP services, it will automatically assign itself a default IP:

192.168.0.100

Whereas the default port number would be **80**. In order to access that camera, the IP address of the PC has to be configured to match the network segment of the camera.

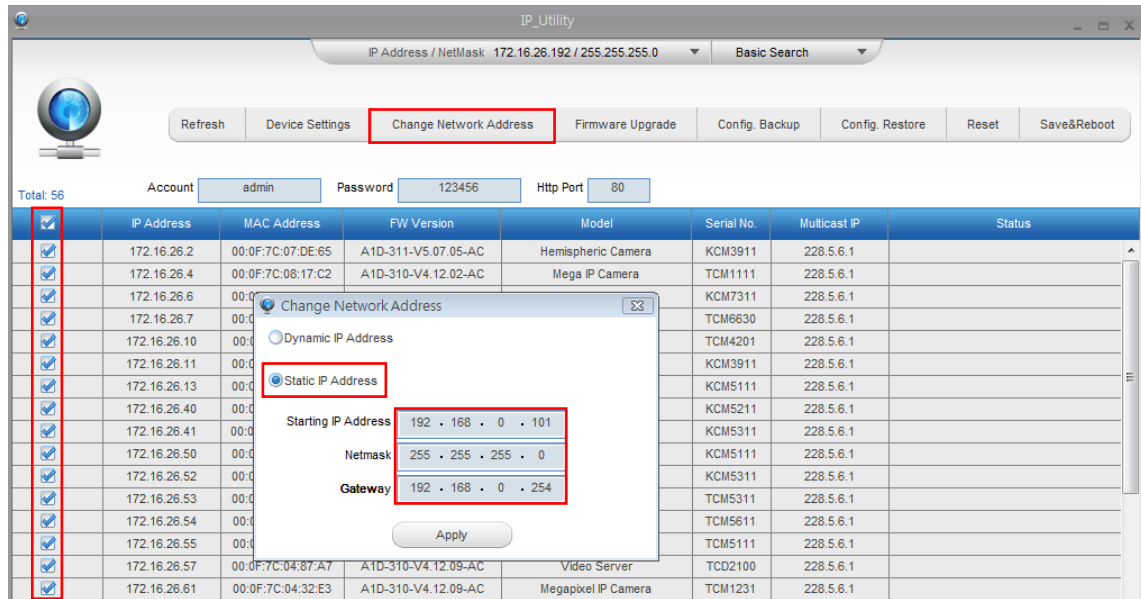
Manually adjust the IP address of the PC:

In the following example, based on Windows 7, we will configure the IP address to **192.168.0.99** and set Subnet Mask to **255.255.255.0** by using the steps below:



Manually adjust the IP addresses of multiple cameras:

If there are more than 1 camera to be used in the same local area network and there is no DHCP server to assign unique IP addresses to each of them, all of the cameras would then have the initial IP address of **192.168.0.100**, which is not a proper situation for network devices – all the IP addresses have to be different from each other. The easiest way to assign cameras the IP addresses is by using **IP Utility**:



With the procedure shown above, all the cameras will have unique IP addresses, starting from 192.168.0.101. In case there are 20 cameras selected, the last one of the cameras would have the IP 192.168.0.120.

Later, by pressing the “Refresh” button of the IP Utility, you will be able to see the list of cameras with their new IP addresses.



Please note that it is also possible to change the IP addresses manually by using the Web browser. In such case, please plug in only one camera at a time, and change its IP address by using the Web browser before plugging in the next one. This way, the Web browser will not be confused about two devices having the same IP address at the same time.

Access the Camera

Now that the camera and the PC are both having their unique IP addresses and are under the same network segment, it is possible to use the Web browser of the PC to access the camera.

You can use **Microsoft Internet Explorer** to access the camera.

The browser functionality comparison:

Functionality	Internet Explorer
Live Video	Yes
Live Video Area Resizable	Yes
PTZ Control	Yes
Capture the snapshot	Yes
Video overlay based configuration (Motion Detection regions, Privacy Mask regions)	Yes
All the other configurations	Yes

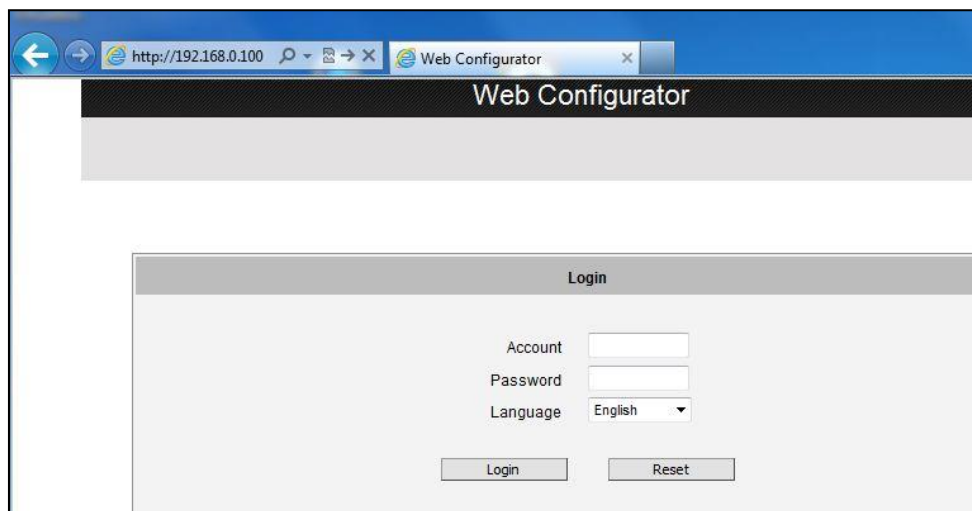
When using Internet Explorer browser, the ActiveX control for video stream management will be downloaded from the camera directly – the user just has to accept the use of such control when prompted so. No other third party utilities are required to be installed in such case.

The following examples in this manual are based on Internet Explorer browser in order to cover all functions of the camera.

Assuming that the camera's IP address is **192.168.0.100**, you can access it by opening the Web browser and typing the following address into Web browser's address bar:

http://192.168.0.100

Upon successful connection to the camera, the user interface called **Web Configurator** would appear together with the login page. The HTTP port number was not added behind the IP address since the default HTTP port of the camera is 80, which can be omitted from the address for convenience.



Before logging in, you need to know the factory default Account and Password of the camera.

Account: **Admin**

Password: **123456**

For further operations, please refer to the **Firmware User Manual**.



Copyright © 2017, ACTi Corporation, All Rights Reserved

7F, No. 1, Alley 20, Lane 407, Sec. 2, Ti-Ding Blvd., Neihu District, Taipei, Taiwan 114, R.O.C.

TEL : +886-2-2656-2588 FAX : +886-2-2656-2599

Email: sales@acti.com