

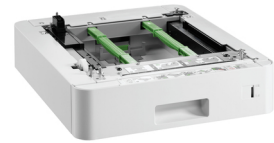
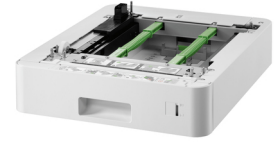
Brother LT-330CL tulostustarvikkeiden varaosa Lokero

Tuotemerkki : Brother

Tuotekoodi: LT-330CL

Tuotteen nimi : LT-330CL

Brother LT-330CL. Malli: Lokero, Laitteiden yhteensopivuus: Laser-/LED-tulostin, Tuotemerkin yhteensopivuus: Brother, Yhteensopivuus: HL-L8260CDW, HL-L8360CDW, HL-L9310CDW, HL-L9310CDWT, DCP-L8410CDW, MFC-L8690CDW, MFC-L8900CDW, MFC-L9570CDW,...



Features		Packaging data	
Type *	Tray	Package weight	7.48 kg
Device compatibility *	Laser/LED printer	Technical details	
Brand compatibility *	Brother	Master (outer) cases per pallet	12 pc(s)
Compatibility *	HL-L8260CDW, HL-L8360CDW, HL-L9310CDW, HL-L9310CDWT, DCP-L8410CDW, MFC-L8690CDW, MFC-L8900CDW, MFC-L9570CDW, MFC-L9570CDWT	Pallet type	800 x 1200 mm
		Logistics data	
Maximum capacity	250 sheets	Products per pallet	12 pc(s)
Country of origin	China	Master (outer) cases per pallet layer	2 pc(s)
Weight & dimensions		Layers per pallet	6 pc(s)
Width	570 mm	Pallet gross height	17.7 cm
Depth	270 mm	Pallet gross weight	110.4 kg
Height	640 mm	Harmonized System (HS) code	84439990
Weight	5.42 kg		



4977766774567



0012502646761



012502646761

Disclaimer. The information published here (the "Information") is based on sources that can be considered reliable, typically the manufacturer, but this Information is provided "AS IS" and without guarantee of correctness or completeness. The Information is only indicative and can be changed at any time without notification. No rights can be based on the Information. Suppliers or aggregators of this Information do not accept any liability with regard to the content of (web)pages and other documents, including its Information. The publisher of the Information can not be held liable for the content of 3rd party websites that are linking this Information or are linked to from this Information. You as the User of the Information are solely responsible for the choice and usage of this Information. You are not entitled to transfer, copy or otherwise multiply or distribute the Information. You are obliged to follow the directions of the copyright owner(s) with regard to the use of the Information. Exclusively Dutch law is applicable. With regard to price and stock data on the site, the publisher followed a number of starting points, which are not necessarily relevant for your private or business circumstances. Therefore, the price and stock data are only indicative and are subject to changes. You are personally responsible for the way you use and apply this information. As a user of the Information or sites or documents in which this Information is included, you will adhere to standard fair use including avoidance of spamming, ripping, intellectual-property violations, privacy violations, and any other illegal activity.