



Simply Better Connections

UH3239

USB-C Multiport Mini Dock
with Power Pass-Through
User Manual

Compliance Statements

FEDERAL COMMUNICATIONS COMMISSION INTERFERENCE STATEMENT

This equipment has been tested and found to comply with the limits for a Class B digital service, pursuant to Part 15 of the FCC rules. These limits are designed to provide reasonable protection against harmful interference in a residential installation. Any changes or modifications made to this equipment may void the user's authority to operate this equipment. This equipment generates, uses, and can radiate radio frequency energy. If not installed and used in accordance with the instructions, may cause harmful interference to radio communications. However, there is no guarantee that interference will not occur in a particular installation. If this equipment does cause harmful interference to radio or television reception, which can be determined by turning the equipment off and on, the user is encouraged to try to correct the interference by one or more of the following measures:

- ◆ Reorient or relocate the receiving antenna.
- ◆ Increase the separation between the equipment and receiver.
- ◆ Connect the equipment into an outlet on a circuit different from that to which the receiver is connected.
- ◆ Consult the dealer or an experienced radio/TV technician for help.

The device complies with Part 15 of the FCC Rules. Operation is subject to the following two conditions: (1) this device may not cause harmful interference, and (2) this device must accept any interference received, including interference that may cause undesired operation.

FCC Caution: Any changes or modifications not expressly approved by the party responsible for compliance could void the user's authority to operate this equipment.



KCC Statement

유선 제품용 / B 급 기기 (가정용 방송 통신 기기)
 이 기기는 가정용 (B 급) 전자파적합기기로서 주로 가정에서 사용하는
 것을 목적으로 하며, 모든 지역에서 사용할 수 있습니다.

HDMI Trademark Statement

The terms HDMI, HDMI High-Definition Multimedia Interface, and the HDMI Logo are trademarks or registered trademarks of HDMI Licensing Administrator, Inc.



RoHS

This product is RoHS compliant.

About this Manual

This user manual is provided to help you get the most from the UH3239 unit. It covers all aspects of installation, configuration, and operation. An overview of the information found in the manual is provided below.

Chapter 1, Introduction introduces you to the USB-C Multiport Mini Dock with Power Pass-Through. Its purpose, features, and panel components are presented and described.

Chapter 2, Hardware Setup / Configuration describes the steps to quickly and safely set up your installation and presents the suggested video resolutions.


Appendix provides a list of safety instructions and precautions, contact information for ATEN technical support, product specifications, and other technical information.

Note:

- ◆ Read this manual thoroughly and follow the installation and operation procedures carefully to prevent any damage to the unit or any connected devices.
 - ◆ ATEN regularly updates its product documentation for new features and fixes. For an up-to-date UH3239 documentation, visit <http://www.aten.com/global/en/>
-

Conventions

This manual uses the following conventions:

- Monospaced** Indicates text that you should key in.
- [] Indicates keys you should press. For example, [Enter] means to press the **Enter** key. If keys need to be chorded, they appear together in the same bracket with a plus sign between them: [Ctrl+Alt].
1. Numbered lists represent procedures with sequential steps.
- ◆ Bullet lists provide information, but do not involve sequential steps.
- > Indicates selecting the option (on a menu or dialog box, for example), that comes next. For example, Start > Run means to open the *Start* menu, and then select *Run*.
-  Indicates critical information.

Terminology

| Terminology | Description |
|-----------------------|---|
| host device | A host device is the device that you wish to access and control through the mini dock. |
| PD | PD is short for USB Power Delivery, a charging standard for handling higher power and allows a range of devices to charge quickly over a USB connection. Through a USB-C PD port, a device charges faster from a PD-compatible power bank/ adapter. |
| pass-through charging | Pass-through charging is the ability of a power bank or adapter to charge itself and other connected devices at the same time. The device is equipped with an extra USB-C Power Delivery (PD) port so the user can connect a separated USB-C PD power adapter for charging. |

Product Information

For information about all ATEN products and how they can help you connect without limits, visit ATEN on the Web or contact an ATEN Authorized Reseller. Visit ATEN on the Web for a list of locations and telephone numbers:

| | |
|---------------|---|
| International | http://www.aten.com |
| North America | http://www.aten-usa.com |

User Information

Online Registration

Be sure to register your product at our online support center:

| | |
|---------------|---|
| International | http://eservice.aten.com |
|---------------|---|

Telephone Support

For telephone support, call this number:

| | |
|---------------|---|
| International | 886-2-8692-6959 |
| China | 86-400-810-0-810 |
| Japan | 81-3-5615-5811 |
| Korea | 82-2-467-6789 |
| North America | 1-888-999-ATEN ext 4988 1-949-428-1111 |

User Notice

All information, documentation, and specifications contained in this manual are subject to change without prior notification by the manufacturer. The manufacturer makes no representations or warranties, either expressed or implied, with respect to the contents hereof and specifically disclaims any warranties as to merchantability or fitness for any particular purpose. Any of the manufacturer's software described in this manual is sold or licensed *as is*. Should the programs prove defective following their purchase, the buyer (and not the manufacturer, its distributor, or its dealer), assumes the entire cost of all necessary servicing, repair and any incidental or consequential damages resulting from any defect in the software.

Table of Contents

| | |
|---------------------------------|------|
| Compliance Statements | ii |
| About this Manual | iv |
| Conventions | v |
| Terminology | v |
| Product Information | vi |
| User Information | vi |
| Online Registration | vi |
| Telephone Support | vi |
| User Notice | vii |
| Table of Contents | viii |

1. Introduction

| | |
|---|---|
| Overview | 1 |
| Features | 1 |
| Getting Started Tasks | 2 |
| Supported Host Devices and Requirements | 3 |
| Windows-based USB-C enabled computer | 3 |
| Kaby Lake Graphics | 3 |
| Mac-based USB-C enabled computer | 4 |
| iPadOS USB-C enabled Tablet | 4 |
| Components | 5 |

2. Hardware Setup / Configuration

| | |
|-------------------------------|---|
| Connecting the Unit | 7 |
|-------------------------------|---|

Appendix

| | |
|--|----|
| Safety Instructions | 9 |
| General | 9 |
| Cables | 10 |
| Troubleshooting | 11 |
| Power Supply Consideration | 11 |
| iPadOS Limitation | 11 |
| Identifying Computer's System Processor Version | 12 |
| Identifying Computer's System Architecture Version | 13 |
| Specifications | 14 |
| Technical Support | 16 |
| International | 16 |
| North America | 16 |
| Limited Warranty | 17 |

Chapter 1

Introduction

Overview

The UH3239 USB-C Multiport Mini Dock is a portable device that helps you expand your USB-C workstation with a USB mouse, USB keyboard, monitor, external hard drive, SD card, and micro SD card, all through a USB-C port. While providing expansion to external keyboard, monitor, mouse, and storage, the mini dock also supports power pass-through that allows you to supply power to the connected devices.

Features

- ◆ 6-in-1 multi-function dock – includes 1 x HDMI, 1x SD / Micro SD card reader, 1 x USB-C PD port and 2 x USB 3.2 Gen 1 Type-A ports
- ◆ Supports USB Power Delivery 2.0 for laptop charging up to 60W via USB-C PD power adapter - power profiles include 5V, 12V, 15V, 20V
- ◆ Supports resolutions up to 4K (3840 x 2160 @ 30Hz) for superior video distribution
- ◆ Plug and Play – no drivers needed
- ◆ Works with all major operating systems: Windows, macOS X and iPadOS
- ◆ Compatible with Thunderbolt™ 3 (USB-C)

Getting Started Tasks

Follow the steps below to get started with your UH3239 USB-C Multiport Mini Dock.

| Step | Task | Detailed Information |
|------|---|---|
| 1 | Unpack the package and check if you have the following: <ul style="list-style-type: none"> ◆ 1 x UH3239 USB-C Multiport Mini Dock with Power Pass-Through ◆ 1 x user instructions | |
| 2 | Check if your mobile device or computer is supported by the UH3239 USB-C Multiport Mini Dock. | See <i>Supported Host Devices and Requirements</i> , page 3. |
| 3 | Check if you have the equipment you need: <ul style="list-style-type: none"> ◆ 1 x UH3239 USB-C Multiport Mini Dock ◆ 1 x USB-C PD power adapter of at least 65W (not included in the package) <p>Note: For laptop charging, a pure USB-C PD (LPS-certified) of at least 65 W power adapter is recommended.</p> <ul style="list-style-type: none"> ◆ 1 x USB-C enabled host device ◆ 1 x HDMI enabled monitor ◆ 1 x USB keyboard ◆ 1 x USB mouse ◆ 1 x SD card ◆ 1 x micro SD card | |
| 4 | Connect your prepared devices. | See <i>Connecting the Unit</i> , page 7. See <i>Troubleshooting</i> , page 11. |

Supported Host Devices and Requirements

Windows-based USB-C enabled computer

| Component | Minimum Requirements |
|------------------|---|
| Operating System | Windows® 10 (32-bit / 64-bit) or above |
| Processor | Intel 7th-Generation Core Processor (Kaby Lake with HD 6XX series integrated graphics) or above. Note: For a procedure on how to check the processor and system architecture version, see <i>Identifying Computer's System Processor Version</i> , page 12 and <i>Identifying Computer's System Architecture Version</i> , page 13. |
| USB-C port | At least one USB-C port for connecting the UH3239 USB-C Multiport Mini Dock. |
| DP Alt Mode | To transmit video through a USB-C port, make sure your USB-C host device supports DP Alt Mode over the USB-C port, and that it has been enabled. |

Kaby Lake Graphics

Make sure your Windows-based USB-C computer is compatible with the system requirements below.

| Intel 6 th -Generation processor micro architecture Sky Lake | | Intel 7 th -Generation processor micro architecture Kaby Lake | |
|--|--------|---|--------|
| Processor Branding | GPU | Processor Branding | GPU |
| Core i7 | HD 530 | Core i7 | HD 620 |
| Core i5 | HD 530 | Core i7 | HD 615 |
| Core i5 | HD 510 | Core i5 | HD 620 |
| Core i3 | HD 530 | Core i5 | HD 615 |
| Core i3 | HD 510 | Core i3 | HD 620 |
| | | Core m3 | HD 615 |

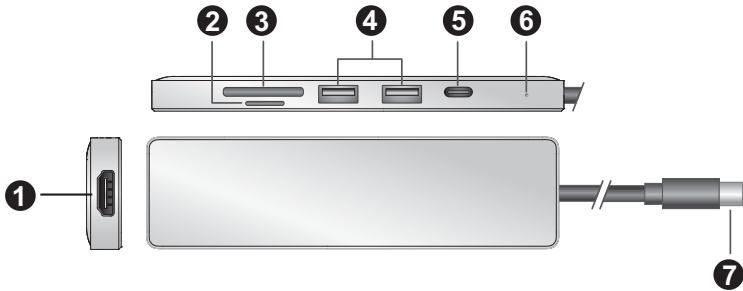
Mac-based USB-C enabled computer

| Component | Minimum Requirements |
|------------------|---|
| Operating System | <ul style="list-style-type: none">◆ MacBook 2015 or above◆ MacBook Pro 2016 or above◆ Mac OS X 10.12 or later |
| USB-C port | At least one USB-C port for connecting the UH3239 USB-C Multiport Mini Dock. |

iPadOS USB-C enabled Tablet

| Component | Minimum Requirements |
|------------------|--|
| Operating System | <ul style="list-style-type: none">◆ iPadOS 13.1 or later◆ iPad Pro 3rd Generation or above |
| USB-C port | At least one USB-C port for connecting the UH3239 USB-C Multiport Mini Dock. |

Components



| No. | Component | Description |
|-----|----------------------------|--|
| 1 | HDMI output port | Connects to an HDMI monitor for video display. |
| 2 | Micro SD card slot | Receives a Micro SD card. |
| 3 | SD card slot | Receives an SD card. |
| 4 | USB 3.2 Gen 1 Type-A ports | Connects to USB peripheral devices. Note: We do not recommend to connect these ports to Bluetooth mouse or keyboard as it may cause interference with the USB transmission. |
| 5 | USB-C DC-in port | Connect a USB-C PD power adapter or a USB-C peripheral device to the unit's USB-C DC-in port, respectively for power redundancy or peripheral device operation. Note: <ul style="list-style-type: none"> ◆ This USB-C DC-in port also supports USB 3.2 Gen 1 Type-C data transfer. ◆ Please use Limited Power Source (LPS-certified) USB-C PD power adapter. |
| 6 | power LED | The LED lights blue to indicate the unit is powered on. |
| 7 | USB-C host connector | Connects to the host's USB-C port. |

Note: For laptop charging, a pure USB-C PD (LPS-certified) of at least 65 W power adapter is recommended.

This Page Intentionally Left Blank

Chapter 2

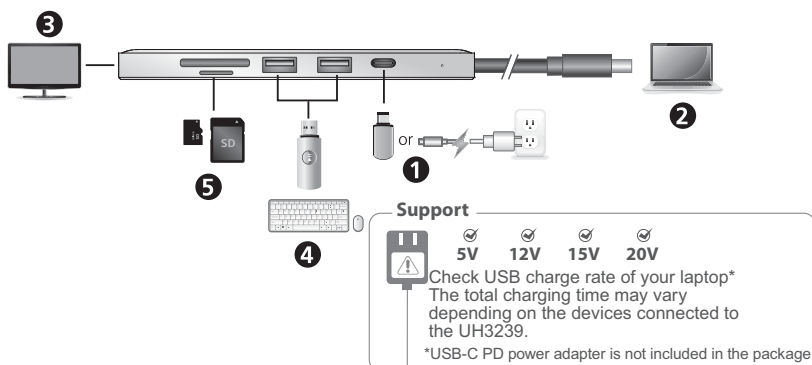
Hardware Setup / Configuration



Please review the safety information regarding the placement of this device in *Safety Instructions*, page 9.

Connecting the Unit

Follow the steps below to connect the UH3239 unit.



1. Connect a USB-C PD power adapter or a USB-C peripheral device to the unit's USB-C DC-in port, respectively for power redundancy or peripheral device operation.

Note: Please connect the USB-C PD power adapter to the USB-C DC-in port before using the dock. Plugging or unplugging of the USB-C DC-in port may cause a momentary disconnection on USB devices connected to the dock.

2. Connect a USB-C enabled host device to the unit's USB-C host connector.
 3. For video display, connect an HDMI monitor to the units' HDMI output port.
 4. Connect USB peripheral devices to the unit's USB 3.2 Gen 1 Type-A ports.
 5. Insert an SD or Micro SD card into their respectively card reader slots.
-

This Page Intentionally Left Blank

Safety Instructions

General

- ◆ This product is for indoor use only.
- ◆ Read all of these instructions. Save them for future reference.
- ◆ Follow all warnings and instructions marked on the device.
- ◆ Do not place the device on any unstable surface (cart, stand, table, etc.). If the device falls, serious damage will result.
- ◆ Do not use the device near water.
- ◆ Do not place the device near, or over, radiators or heat registers.
- ◆ The device cabinet is provided with slots and openings to allow for adequate ventilation. To ensure reliable operation, and to protect against overheating, these openings must never be blocked or covered.
- ◆ The device should never be placed on a soft surface (bed, sofa, rug, etc.) as this will block its ventilation openings. Likewise, the device should not be placed in a built in enclosure unless adequate ventilation has been provided.
- ◆ Never spill liquid of any kind on the device.
- ◆ Unplug the device from the wall outlet before cleaning. Do not use liquid or aerosol cleaners. Use a damp cloth for cleaning.
- ◆ The device should be operated from the type of power source indicated on the marking label. If you are not sure of the type of power available, consult your dealer or local power company.
- ◆ To prevent damage to your installation it is important that all devices are properly grounded.
- ◆ Do not allow anything to rest on the power cord or cables. Route the power cord and cables so that they cannot be stepped on or tripped over.
- ◆ Position system cables and power cables carefully; Be sure that nothing rests on any cables.
- ◆ Never push objects of any kind into or through cabinet slots. They may touch dangerous voltage points or short out parts resulting in a risk of fire or electrical shock.
- ◆ Do not attempt to service the device yourself. Refer all servicing to qualified service personnel.

- ◆ If the following conditions occur, unplug the device from the wall outlet and bring it to qualified service personnel for repair.
 - ◆ The power cord or plug has become damaged or frayed.
 - ◆ Liquid has been spilled into the device.
 - ◆ The device has been exposed to rain or water.
 - ◆ The device has been dropped, or the cabinet has been damaged.
 - ◆ The device exhibits a distinct change in performance, indicating a need for service.
 - ◆ The device does not operate normally when the operating instructions are followed.
- ◆ Only adjust those controls that are covered in the operating instructions. Improper adjustment of other controls may result in damage that will require extensive work by a qualified technician to repair.

Cables

- ◆ Cables and connectors that connect cables are designed and manufactured for the purpose of combining electrical and electrical signals. Therefore, we do not design or manufacture on the premise that external force is applied.
- ◆ Do not energize the cable and connector with force applied. Do not apply excessive external force as it may cause damage and cause a malfunction or accident.
- ◆ Do not use the cable or connector as a structure such as the housing of KVM or other equipment to be connected (KVM body is not fixed, and the connector is used to prevent movement or replace the fixing bracket) or as a part of it. Please give me.
- ◆ When wiring, make sure that you have enough room to bend it so that it can be handled. Extreme bending or pulling the cable in two directions can damage the connector.
- ◆ Do not install cables or connected connectors in a corrosive substance, corrosive gas (ammonia, sulfur, etc.), hot and humid environment, or in direct sunlight. It may cause malfunctions such as performance deterioration due to damage or corrosion.

Troubleshooting

Power Supply Consideration

The UH3239 USB-C Multiport Mini Dock requires a total of 15 W power consumption from a dedicated power adapter, and then provides balanced power supply to the connected USB-C host device with the rest of the power supply.

When the total of power consumption of the UH3239 exceeds 15 W, a self-protection mechanism is activated, and some of the connected devices (excludes USB-C host device) may not be found.

| Component | Power Consumption |
|------------------------------|--|
| USB-C host device | 7 W ~ 45 W depending on your USB-C host device's power specification. Note: We recommend using a USB-C PD (LPS-certified) power adapter of at least 65 W. |
| USB Type-A peripheral device | The power consumption varies depending on your USB Type-A peripheral device's power specification. Note: We recommend using a USB-C PD (LPS-certified) power adapter of at least 65 W. |

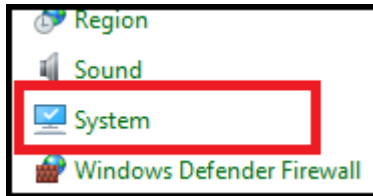
iPadOS Limitation

For iPad USB-C enable tablets power delivery, make sure to upgrade its iPadOS version to iPadOS 13.2 or later to meet the power delivery standards for iPads.

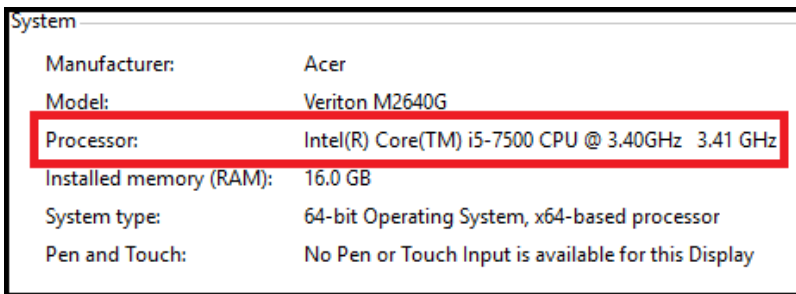
Identifying Computer's System Processor Version

To identify the system processor version from your Windows-based USB-C computer, follow the steps below:

1. From your Windows-based USB-C computer, go to **Control Panel > System**.



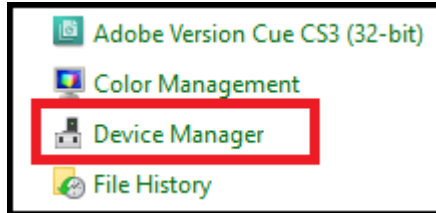
2. This page appears. You should find the processor information there.



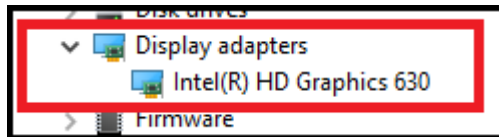
Identifying Computer's System Architecture Version

To identify the system architecture version from your Windows-based USB-C computer, follow the steps below:

1. From your Windows-based USB-C computer, go to **Control Panel > Device Manager**.



2. This page appears and click **Display adapters** to show the architecture version.



Specifications

| Function | UH3239 |
|-----------------------------|---|
| Computer Connections | 1 |
| Cable Length | 55cm |
| Connectors | |
| Computer | 1 x USB 3.2 Gen1 Type-C Male Cable |
| Device | 2 x USB 3.2 Gen1 Type-A Female (Blue) |
| Video Output | 1 x HDMI Female (Black) |
| Power | <p>1 x USB Type-C Female (supports USB 3.2 Gen1 Type-C Port data transfer)</p> <p>Supports Power Delivery 2.0 for laptop charging up to 60W*</p> <p>*Supported power profiles include: 5V, 12V, 15V, 20V (additional USB-C power adapter needed).</p> |
| Performance | <p>Flash Memory:</p> <p>Supports SD V1.0 / v1.1 / v2.0 / V3.01 and V5.0</p> <p>SD – Capacity up to 2GB</p> <p>SDHC – Capacity up to 32GB</p> <p>SDXC – Capacity up to 2TB</p> |
| Video Resolution | HDMI - 3840*2160@30Hz |
| Power Consumption | DC 5V, 15W |

| Function | UH3239 |
|----------------------------|---|
| System Requirements | <ol style="list-style-type: none"> 1. Windows USB-C enabled computer: <ul style="list-style-type: none"> ◆ Windows® 10 (32-bit / 64-bit) or above ◆ With Intel 7th-Generation Core Processor (Kaby – Lake with HD 6xx series integrated graphics) or above ◆ For video output to work through a USB-C port, it must support DP Alt Mode 2. Mac USB-C enabled computer: <ul style="list-style-type: none"> ◆ MacBook 2015 or above ◆ MacBook pro 2016 or above ◆ Mac OS X 10.12 or later 3. USB-C enabled iPadOS Tablet: <ul style="list-style-type: none"> ◆ iPadOS 13.1 or later ◆ iPad Pro 3rd generation (USB-C) or above |
| Environmental | |
| Operating Temperature | 0 - 40 °C |
| Storage Temperature | -20 - 60 °C |
| Humidity | 0 - 80% RH, Non-Condensing |
| Physical Properties | |
| Housing | Aluminum |
| Weight | 0.078 kg (0.17 lb) |
| Dimensions (L x W x H) | 13.30 x 3.60 x 1.10 cm (5.24 x 1.42 x 0.43 in.) |

Technical Support

International

- ◆ For online technical support – including troubleshooting, documentation, and software updates: <http://support.aten.com>
- ◆ For telephone support, see *Telephone Support*, page vi:

North America

| | | |
|--------------------------|--|---|
| Email Support | | support@aten-usa.com |
| Online Technical Support | Troubleshooting Documentation Software Updates | http://www.aten-usa.com/support |
| Telephone Support | | 1-888-999-ATEN ext 4988 1-949-428-1111 |

When you contact us, please have the following information ready beforehand:

- ◆ Product model number, serial number, and date of purchase
- ◆ Your computer configuration, including operating system, revision level, expansion cards, and software
- ◆ Any error messages displayed at the time the error occurred
- ◆ The sequence of operations that led up to the error
- ◆ Any other information you feel may be of help

Limited Warranty

ATEN warrants its hardware in the country of purchase against flaws in materials and workmanship for a Warranty Period of two [2] years (warranty period may vary in certain regions/countries) commencing on the date of original purchase. This warranty period includes the [LCD panel of ATEN LCD KVM switches](#). Select products are warranted for an additional year (see [A+ Warranty](#) for further details). Cables and accessories are not covered by the Standard Warranty.

What is covered by the Limited Hardware Warranty

ATEN will provide a repair service, without charge, during the Warranty Period. If a product is defective, ATEN will, at its discretion, have the option to (1) repair said product with new or repaired components, or (2) replace the entire product with an identical product or with a similar product which fulfills the same function as the defective product. Replaced products assume the warranty of the original product for the remaining period or a period of 90 days, whichever is longer. When the products or components are replaced, the replacing articles shall become customer property and the replaced articles shall become the property of ATEN.

To learn more about our warranty policies, please visit our website:
<http://www.aten.com/global/en/legal/policies/warranty-policy/>

© Copyright 2021 ATEN® International Co., Ltd.
Released: 2021-08-10

ATEN and the ATEN logo are registered trademarks of ATEN International Co., Ltd. All rights reserved. All other brand names and trademarks are the registered property of their respective owners.