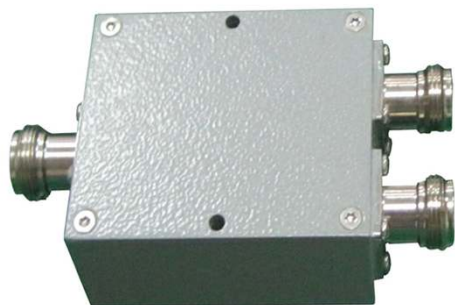


698-2700 MHz 2-Way High Power Splitter with N-Style Female Connector



Ventev splitters are designed to divide or “split” the signal. The splitters are perfect for applications that require coverage of two different areas with a single access point or bridge. The rugged design and small footprint make Ventev splitters ideal for most bridging and LAN applications. *Every splitter is covered by the Company’s one-year warranty program.*

For more information or to purchase, contact Ventev: 800.851.4965 or sales@ventev.com.

SPECIFICATIONS

SKU: 323511
Product #: RMFLT-2-M3-NJ-PR
Frequency Range: 698 ~ 2700 MHz
Division: 2
Insertion Loss: ≤ 0.4 dB
Splitter loss: 3 dB
Isolation between ports: >20 dB
Intermodulation: ≤ -130 dBc
Peak Power, Maximum: 1 kW
Power Rating, Combining: 0.5 W
Power Rating, Splitting: 100W
Reflected Power, Maximum: 3 W
VSWR: ≤1.3
Impedance: 50 Ω
Power Rating: 100 Watts
FIT: 500 ppm/year
Operating Temperature: -22°F to +122°F
Dimensions: 3.98” x 2.05” x 1.02”
Weight: .46 lbs
Ingress Protection Rating: IP65
Connector: N-Style Female (Jack) Connector

FEATURES AND BENEFITS

- Compact, lightweight design
- Easy to mount
- High isolation, low insertion loss and minimal VSWR
- N-Style Female Jack connectors included
- Excellent value—Superior performance at a competitive price

698-2700 MHz 2-Way High Power Splitter with N-Style Female Connector

Technical Drawing

