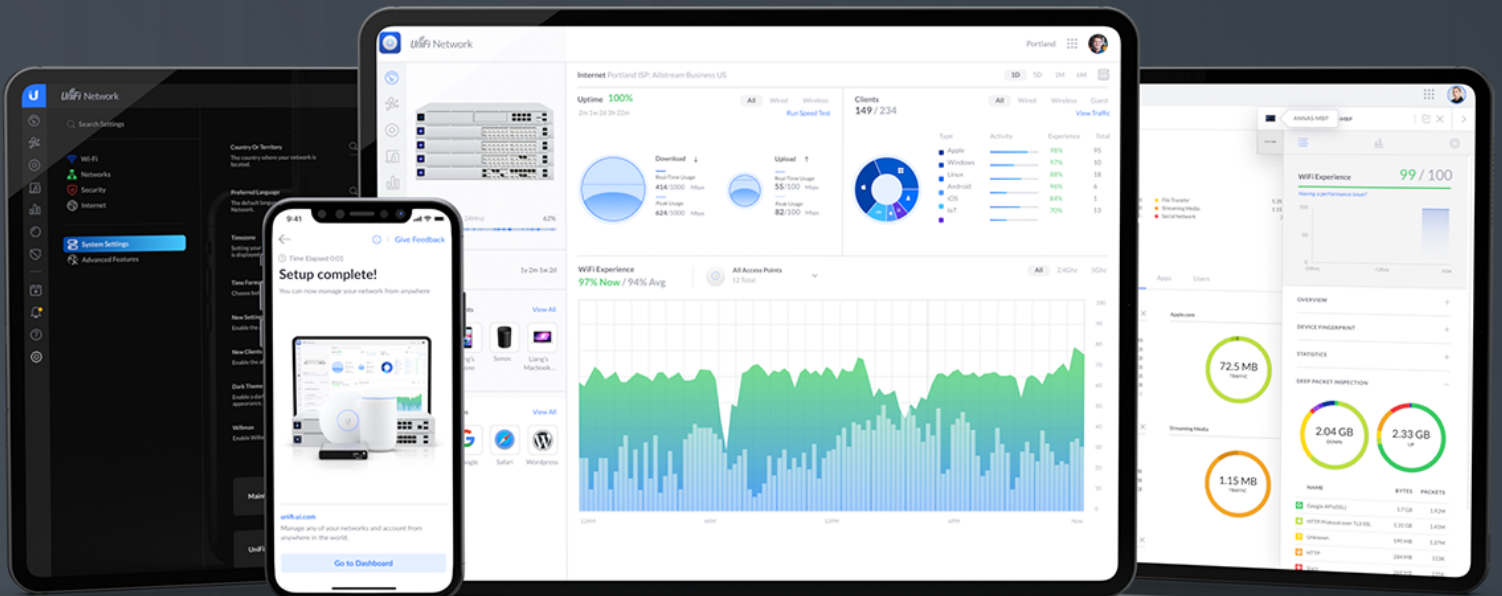




Datasheet UACC-Cable-Patch-Outdoor-W



UniFi Patch Cable Outdoor



Rugged, outdoor patch cable designed to function in the harshest environments.

The UniFi Patch Cable Outdoor is an all-weather patch cable designed for outdoor UniFi deployments that require enhanced protection from the elements. It features a shielded RJ45 plug, internal foil shielding, and a built-in ESD drain wire—all encased in a weatherproof, insulating jacket. The UniFi Patch Cable Outdoor is available in multiple lengths (1, 2, 3, 5, and 8 meters) to ensure that you can reach all of your devices.

Specifications

Weight	60 / 90 / 125 / 200 / 315 g (2.12 / 3.17 / 4.41 / 7.05 / 11.11 oz)
Cable length	1 / 2 / 3 / 5 / 8 m (3.28 / 6.56 / 9.84 / 16.40 / 26.25 ft)
Cable color	White
Cable type	Category 5e
Shielding type	STP
Flame rating	VW-1 (UL1581)
Conductor wire gauge	24 AWG
Conductor type	Stranded copper
Jacket material	Thermoplastic elastomer (TPE)
Jacket diameter	6 mm (0.24")
Bend radius	Min. 24 mm (0.94")
Storage temperature	-30 to 75°C (-22 to 167°F)
Installation temperature	-20 to 60°C (-4 to 140°F)
Operation temperature	-40 to 80°C (-40 to 176°F)
Anti-crosstalk divider	No
Standards	TIA/EIA-568-B.2 ISO/IEC 11801



Specifications are subject to change. Ubiquiti products are sold with a limited warranty described at www.ui.com/support/warranty

©2021 Ubiquiti Inc. All rights reserved. Ubiquiti, Ubiquiti Networks, the Ubiquiti U logo, the Ubiquiti beam logo, UniFi, and UniFi Network are trademarks or registered trademarks of Ubiquiti Inc. in the United States and in other countries. All other trademarks are the property of their respective owners.