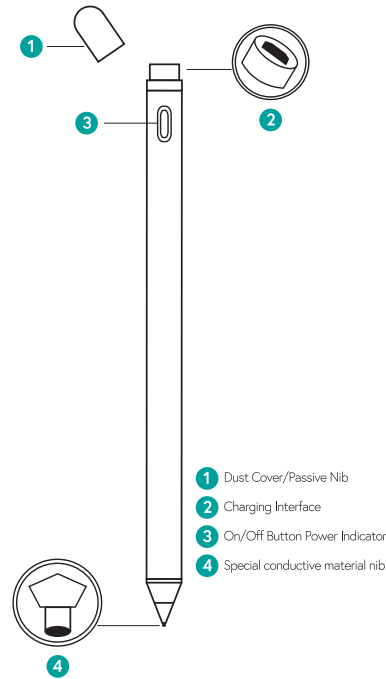


User Manual

Active Capacitive Pen



Product Details



Product Specifications

Model No.: Active capacitive pen
 Material: Aluminum alloy
 Process: Spraying, Plating
 Input: 5V 0.1A
 Color: Grey
 Compatible devices: Capacitive touch-screen devices

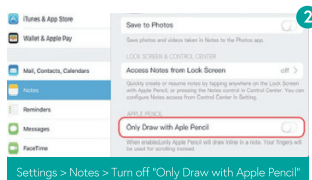
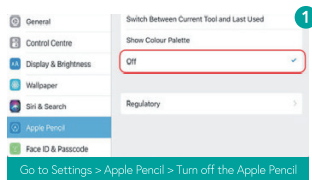
Product Features

1. Stylish and minimalist style, aluminum alloy with piano baking varnish, calm and luxurious, novel and durable.
2. The tip of the pen is made of special conductive material and is precision ground. Create a smooth tip to prevent damage to the screen.
3. It is compatible with 98% of capacitive touch-screen devices on the market like smartphones, tablets etc.
4. The product lasts for 15-20 hour at full power and does not use intelligent power cut for 5/30 minutes.

How to connect

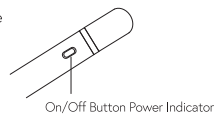
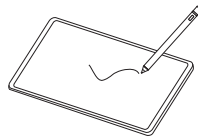
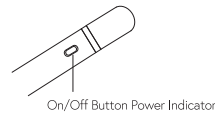
Please follow these steps to make sure the Active Stylus is allowed to work on your iPad or iPad Pro:

1. Go to Settings > Apple Pencil > Turn off the Apple Pencil. Settings > Notes > Turn off "Only Draw with Apple Pencil".
2. Please turn off the Bluetooth connection before using your new stylus pen if you have connected the "apple pencil". No need to install Bluetooth.
3. ALL iPad IOS systems must be updated to iOS 12.2 or above.
4. It will be a better user experience if used with the tempered glass screen protector.
5. Please ensure it has enough power before use and notice that there is NO press sensitivity, all lines are at the same thickness.



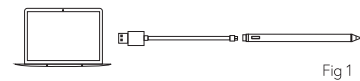
How to Use

1. Please press the button directly on the top of the pen, the blue light will quickly turn on, the active capacitive pen enters into the working mode.
2. Now you can complete the operations like clicking, sliding and etc on the screen of phones, tablets or laptops through the pen instead of finger. You can also use the pen to write, paint in specific Apps.
3. When you press the button again, the active capacitive stylus enters the shutdown state.



How to Charge

- You can charge the pen battery in three ways:
1. Please use the standard USB to micro USB data cable to charge, connect one end to the pen's USB interface and the other to the USB interface on the tablet or computer. (FIG 1)
 2. Please connect one end of the data cable to the pen and the other end to the 5V DC power adapter. (FIG 2)
 3. Please connect one end of the data cable to the pen and the other end to the 5V power bank. (FIG 3)



Note: During the charging process * the red indicator is on, the charging time is 1-2 hours. When it is fully charged, red indicator will auto off.