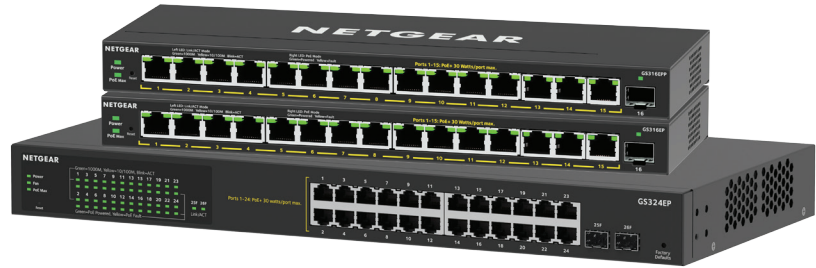
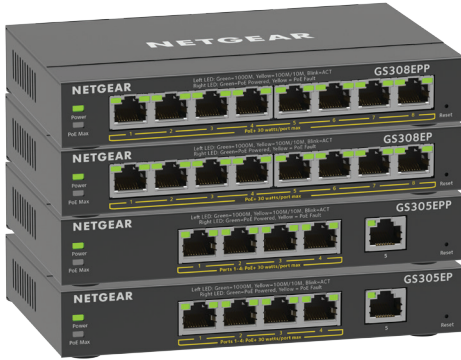




Control and Configure Beyond Plug-and-Play

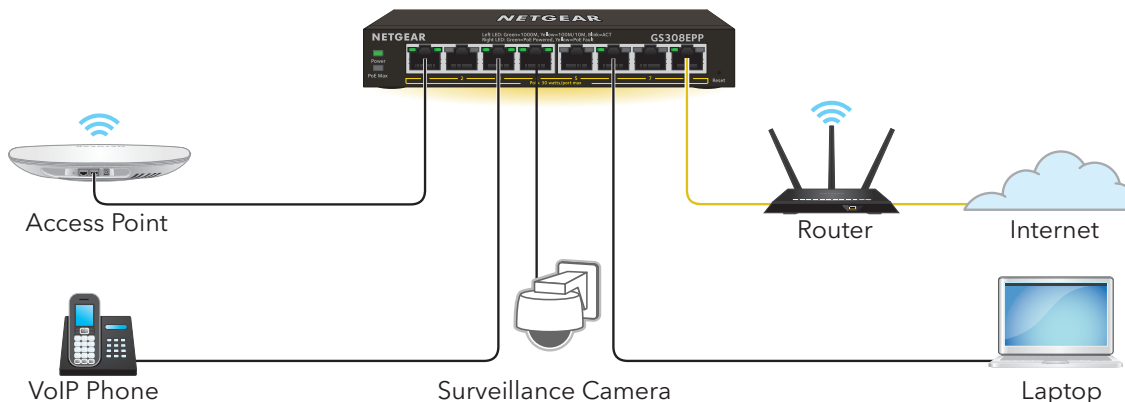


NETGEAR Plus Switches with PoE meets business networks growing need by providing fundamental network features such as simplified VLANs, QoS set-up and IGMP Snooping that will help optimize the performance of business networks. Plus Switches are the perfect upgrade from the plug-and-play unmanaged switch, delivering essential networking features at a very affordable price. These models support Power-Over-Ethernet (PoE) and can power devices such as VOIP phones, surveillance IP cameras, wireless access points and many other applications. These new Plus switches models include advance PoE control to help optimize the performance and troubleshooting of business networks. The new and improved business-friendly GUI allows easy management and simple configuration. With the growing deployment of applications and an all-in-one solution, providing management and power to these applications would be ideal.

Highlights

- Enable network configuration and management at the price point of unmanaged switches
- Simple, yet useful network set-up on top of plug-and-play connectivity
- Business-friendly and easy-to-use web browser-based management GUI
- VLAN support for traffic segmentation
- Quality of Service (QoS) for traffic prioritization
- Auto “denial-of-service” (DoS) prevention
- Troubleshoot connection issues via cable test
- Loop detection (some models) and broadcast storm controls
- Rate limiting for better bandwidth allocation
- Port mirroring for network monitoring
- Jumbo frame support
- Advanced features such as per port PoE controls
- Uninterrupted PoE keeps PoE power on even when the switch is updating firmware or performing software reboot.
- 802.3at standard offering 30W/port
- Fanless and versatile mounting option of desktop and wall-mountable (except for GS324EP)
- Quiet operation at 32.4dB @ 25°C with rack-mounting option for GS324EP

Small Office/Home Office Network Diagram



Technical Specifications

Features	GS305EP	GS305EPP	GS308EP	GS308EPP	GS316EP	GS316EPP	GS324EP
10/100/1000 RJ45 Copper Ports (Auto Uplink)	5	5	8	8	16	16	24
Enclosure	Metal	Metal	Metal	Metal	Metal	Metal	Metal
Connector Type	Metal	Metal	Metal	Metal	Metal	Metal	Metal
PoE							
# of PoE ports	4	4	8	8	15	15	24
# PoE+ 802.3at Ports	4	4	8	8	15	15	24
SFP ports	0	0	0	0	1	1	2
Total PoE/PoE+ Budget	63W	120W	62W	123W	180W	231W	190W
Advanced PoE Controls	Yes	Yes	Yes	Yes	Yes	Yes	Yes
PoE Scheduling	No	No	No	No	Yes	Yes	Yes
Uninterrupted PoE	Yes	Yes	Yes	Yes	Yes	Yes	No
Performance Specification							
Forwarding modes	Store-and-forward						
Bandwidth	10Gbps	10Gbps	16Gbps	16Gbps	32Gbps	32Gbps	52Gbps
Max MAC entries	4K	4K	4K	4K	4K	4K	4K
Buffer Size	192KB	192KB	192KB	192KB	192KB	192KB	192KB
Energy Efficient Ethernet (IEEE 802.3az) compliant	Yes	Yes	Yes	Yes	Yes	Yes	Yes
Priority queuing	WRR	WRR	WRR	WRR	WRR	WRR	WRR
Jumbo frame support	9,216 bytes	9,216 bytes	9,216 bytes	9,216 bytes	10,000 bytes	10,000 bytes	10,000 bytes
Acoustic noise level @ 25° C (dBA) (ANSI-S10.12)	0	0	0	0	0	0	32.4dBA
Mean Time Between Failures (MTBF) @ 25° C	1,164,104 hrs	853,770 hrs	859,126 hrs	842,428 hrs	784,742 hrs	570,435 hrs	634,966 hours
L2 Services - VLANs							
VLAN (# Supported)	64	64	64	64	64	64	64
IEEE 802.1Q VLAN Tagging	Yes	Yes	Yes	Yes	Yes	Yes	Yes
Port-based VLANs	Yes	Yes	Yes	Yes	Yes	Yes	Yes
L2 Services - Availability							
Link Aggregation/Port Trunking	Yes	Yes	Yes	Yes	Yes	Yes	Yes
Number of Static Manual LAGs and # of members	1/4	1/4	2/4	2/4	8/8	8/8	8/8
L2 Services - Multicast Filtering							
IGMP snooping (v1, v2, and v3)	Yes	Yes	Yes	Yes	Yes	Yes	Yes
Block unknown multicast	Yes	Yes	Yes	Yes	Yes	Yes	Yes
Supported Multicast groups	128	128	128	128	128	128	128
L3 Services - DHCP							
DHCP client	Yes	Yes	Yes	Yes	Yes	Yes	Yes
Quality of Service							
Rate Limiting	Yes	Yes	Yes	Yes	Yes	Yes	Yes
DSCP	Yes	Yes	Yes	Yes	Yes	Yes	Yes
IEEE 802.1p COS	Yes	Yes	Yes	Yes	Yes	Yes	Yes
Port-based VLAN	Yes	Yes	Yes	Yes	Yes	Yes	Yes
TOS	Yes	Yes	Yes	Yes	Yes	Yes	Yes
WRR (Weighted Round Robin)	Yes	Yes	Yes	Yes	Yes	Yes	Yes
Strict Priority queue technology	No	No	No	No	No	No	No

Technical Specifications

IEEE Network Protocols	GS305EP	GS305EPP	GS308EP	GS308EPP	GS316EP	GS316EPP	GS324EP
<ul style="list-style-type: none"> IEEE 802.3 Ethernet IEEE 802.3ab 1000BASE-T IEEE 802.3u 100BASE-T IEEE 802.1p Class of Service 	<ul style="list-style-type: none"> IEEE 802.1Q VLAN Tagging IEEE 802.3x Full-duplex Flow Control IEEE 802.3af PoE IEEE 802.3at PoE+ 	<ul style="list-style-type: none"> IEEE 802.3az Energy Efficient Ethernet (deactivated by default) IEEE 802.3ad Dynamic Link Aggregation (LACP) only on GS316EP, GS316EPP and GS324EP 					
Management							
System Password	Yes	Yes	Yes	Yes	Yes	Yes	Yes
Web browserbased management GUI	Yes	Yes	Yes	Yes	Yes	Yes	Yes
PC Utility	No	No	No	No	No	No	No
Port Mirroring	Yes	Yes	Yes	Yes	Yes	Yes	Yes
Max number of source ports allowed (one-to-one port mirroring)	1	1	1	1	1	1	1
Many-to-one Port Mirroring	No (1 to 1 only)	No (1 to 1 only)	No (1 to 1 only)	No (1 to 1 only)	No (1 to 1 only)	No (1 to 1 only)	No (1 to 1 only)
Cable Test Utility	Yes	Yes	Yes	Yes	Yes	Yes	Yes
FW Upgrade Thru Plus Utility (TFTP)	No	No	No	No	No	No	No
Config download (to Switch) thru Plus Utility	No	No	No	No	No	No	No
Config upload (to server)	Yes	Yes	Yes	Yes	Yes	Yes	Yes
LEDs							
Per port	Speed, Link, Activity, PoE						
Per device	Power, System, PoE Max						Power, PoE Max, FAN
Physical Specifications							
Dimensions (W x D x H)	158 x 101 x 27 mm (6.2 x 4.0 x 1.1 in)	158 x 101 x 27 mm (6.2 x 4.0 x 1.1 in)	158 x 101 x 27 mm (6.2 x 4.0 x 1.1 in)	158 x 101 x 27 mm (6.2 x 4.0 x 1.1 in)	286 x 102 x 27 mm (11.26 x 4.02 x 1.06 in)	286 x 102 x 27 mm (11.26 x 4.02 x 1.06 in)	440 x 204 x 43 mm (17.32 x 8.03 x 1.69 in)
Weight	0.39 kg (0.86 lb)	0.40 kg (0.88 lb)	0.49 kg (1.08 lb)	0.49 kg (1.08 lb)	0.883 kg (1.95 lb)	0.883 kg (1.95 lb)	3.145 kg (6.95 lb)
Environmental Specifications							
Operating							
Operating temperature	32° to 104°F (0° to 40°C)	32° to 104°F (0° to 40°C)	32° to 104°F (0° to 40°C)	32° to 104°F (0° to 40°C)	32° to 104°F (0° to 40°C)	32° to 104°F (0° to 40°C)	32° to 122°F (0° to 50°C)
Humidity (relative)	90% maximum relative humidity (RH), non-condensing						
Altitude	10,000 ft (3,000 m) maximum						
Storage							
Storage temperature	-4° to 158°F (-20° to 70°C)						
Humidity (relative)	95% maximum relative humidity (RH), non-condensing						
Altitude	10,000 ft (3,000 m) maximum						

Technical Specifications

Electromagnetic Emissions and Immunity	GS305EP	GS305EPP	GS308EP	GS308EPP	GS316EP	GS316EPP	GS324EP
Certifications				EMC class B		EMC class A	
				CE		CE	
				UKCA		UKCA	
				FCC		FCC	
				ISED		ISED	
				VCCI		VCCI	
				RCM		RCM	
				KC		KC	
			BSMI		BSMI		
Warranty and Support							
Hardware Warranty (All Except China/India)				5-year warranty			
China/India				1-year warranty			
External Power Adapter Warranty				2-year warranty			N/A
Technical Support (online, phone)				90 days free of Technical Support with registration			
	Category S1	Category S1	Category S1	Category S1	Category 1	Category 1	Category 1
ProSUPPORT OnCall 24x7 Service Plans	PMB0S11-10000S	PMB0S11-10000S	PMB0S11-10000S	PMB0S11-10000S	PMB0311-10000S	PMB0311-10000S	PMB0311-10000S
	PMB0S31-10000S	PMB0S31-10000S	PMB0S31-10000S	PMB0S31-10000S	PMB0331-10000S	PMB0331-10000S	PMB0331-10000S
	PMB0S51-10000S	PMB0S51-10000S	PMB0S51-10000S	PMB0S51-10000S	PMB0351-10000S	PMB0351-10000S	PMB0351-10000S
Package Contents							
All Models							NETGEAR Smart Managed Plus Switch
							Power adapter
							Detachable power cable (varies by region)
							Wall installation kit
							Rubber feet
							Installation guide
							Rack installation kit
						Rubber feet	
						Installation guide	
Optional Modules, Software Licenses and Accessories (For GS316EP, GS316EPP and GS324EP only)							
AGM731F			SFP Transceiver 1000BASE-SX (Short range, multimode)				
AGM732F			SFP Transceiver 1000BASE-LX (Long range, single mode)				
AGM734-10000S			SFP Transceiver 1000BASE-T Copper RJ45 GBIC				

*This product comes with a limited warranty that is valid only if purchased from a NETGEAR authorized reseller, and covers unmodified hardware, fans and internal power supplies -not software or external power supplies, and requires product registration at <https://www.netgear.com/business/registration> within 90 days of purchase; see <https://www.netgear.com/about/warranty> for details. Intended for indoor use only.

*NETGEAR #1 in US Market Share according to NPD data for Unmanaged and Smart Switches, September 2019. NETGEAR #1 in Europe Market Share according to Context data for Unmanaged and Smart Switches, September 2019.

The use of the proper type of cable is required for optimum performance. Please consult this Knowledge Base article for more information: www.netgear.com/cables

NETGEAR and the NETGEAR Logo are trademarks of NETGEAR, Inc. in the United States and/or other countries. Other brand names mentioned herein are for identification purposes only and may be trademarks of their respective holder(s). Information is subject to change without notice. ©NETGEAR, Inc. All Rights reserved.