

TPM-SPI (14-1 pin)

Quick Start Guide

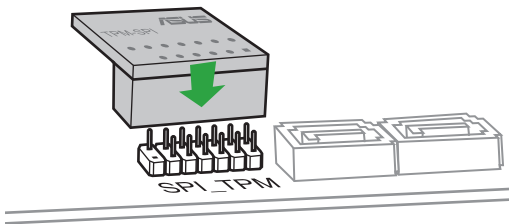
Using the TPM-SPI card

The TPM-SPI card securely store keys, digital certificates, passwords, and data. It helps enhance the network security, protects digital identities, and ensures platform integrity.

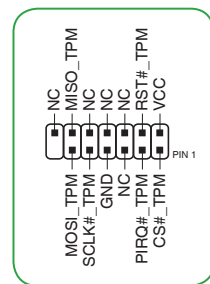
The TPM-SPI card supports 64-bit Windows[®] 10 UEFI OS only.

To use the TPM-SPI card:

1. Insert the TPM-SPI card to the SPI_TPM connector on your motherboard.

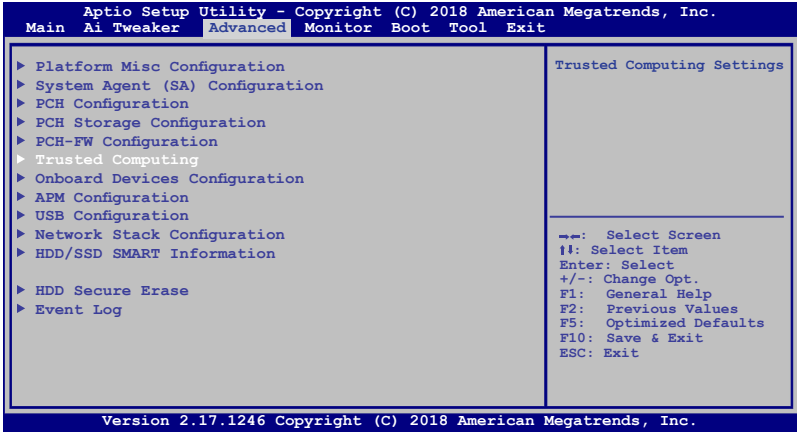


Pin definition:

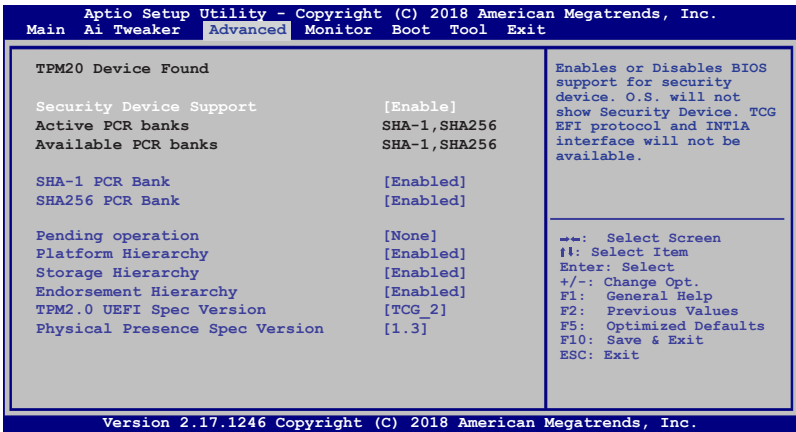


NOTE: The TPM module and BIOS share the same pin layout. The NC signal is used for the TPM-SPI, while the BIOS signal is used for the motherboard.

2. Press <Delete> or <F2> to enter the BIOS Setup program at the system startup.
3. From the Advanced menu, click **Trusted Computing**.



4. Set the **Security Device Support** and **TPM State** items to [Enabled].



5. Press <F10> to save the changes, exit the BIOS Setup program and boot into the OS.
Now you can start using the TPM-SPI card with Windows® BitLocker.

Clearing the TPM security hardware

You can clear the TPM security hardware either from the BIOS or the OS.

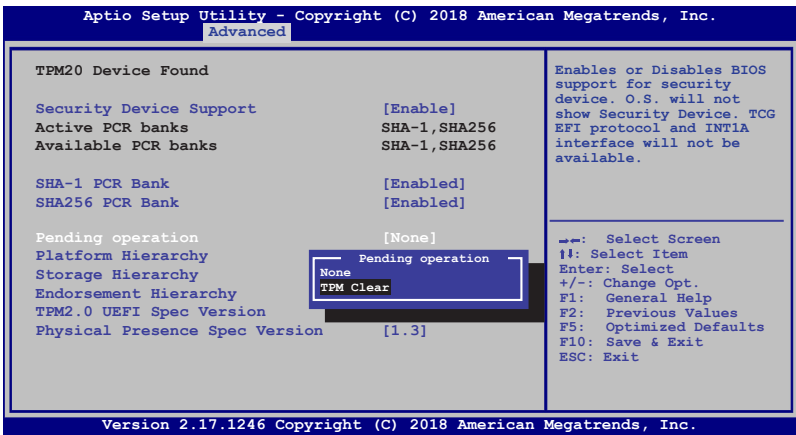
Clearing from the BIOS

To clear from the BIOS:

1. Launch the **Trusted Computing BIOS** screen.

NOTE: For details, refer to steps 2-3 of the section **Using the TPM-SPI card**.

2. Set the **Pending operation** item to **[TPM Clear]**.

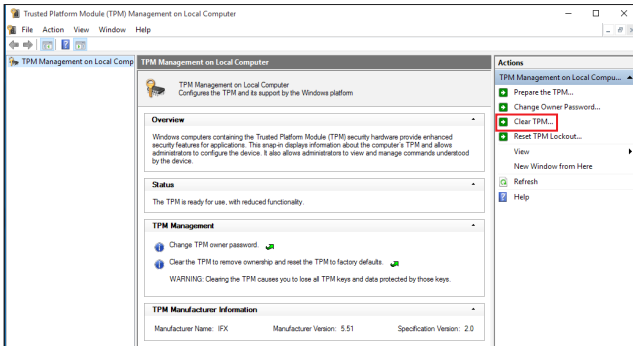


3. Press **<F10>** to save the changes and exit the BIOS Setup program.

Clearing from the OS

To clear from the OS:

1. In the Windows® Search box, key in **tpm.msc** and press <Enter>. The TPM Management screen appears.



2. Under **Actions**, click **Clear TPM...**
3. Click **Restart** to restart your computer.

