

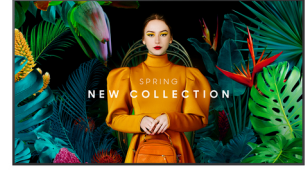
Samsung QH65C Digitaalinen litteä infotaulu 165,1 cm (65") LCD Wi-Fi 700 cd/m² 4K Ultra HD musta Tizen 24/7

Tuotemerkki : Samsung

Tuoteperhe: QHC

Tuotekoodi:
LH65QHCEBGCXEN

Tuotteen nimi : QH65C



Samsung QH65C. Tuotteen muotoilu: Digitaalinen litteä infotaulu. Näytön halkaisija: 165,1 cm (65"), Näytön teknologia: LCD, Näytön erottelutarkkuus: 3840 x 2160 pikseliä, Näytön kirkkaus: 700 cd/m², HD-tyyppi: 4K Ultra HD. Wi-Fi. Toiminta-aika (tunteja/päiviä): 24/7. Käyttöjärjestelmä asennettu: Tizen. Tuotteen väri: musta

Display		Design	
Panel type	VA	Panel mounting interface	400 x 300 mm
LED backlight	✓	Bezel width (bottom)	1.15 cm
Display diagonal *	165.1 cm (65")	Bezel width (side)	1.15 cm
Display technology *	LCD	Bezel width (top)	1.15 cm
Display resolution *	3840 x 2160 pixels	Bezel colour	Charcoal Black
Display brightness *	700 cd/m ²		
HD type *	4K Ultra HD	Performance	
Touchscreen *	✗	Purpose *	Universal
Response time	8 ms	Operating hours (hours/days)	24/7
Contrast ratio (typical)	4000:1	HDCP	✓
Dynamic contrast ratio marketing name	Mega Contrast	HDCP version	2.2
Viewing angle, horizontal	178°	Power	
Viewing angle, vertical	178°	Power consumption (typical) *	203.5 W
Pixel pitch	0.372 x 0.372 mm	Power consumption (sleep)	0.5 W
Display diagonal (metric)	163 cm	Energy efficiency class (SDR)	G
Horizontal scan range	30 - 81 kHz	Energy consumption (SDR) per 1000 hours	148 kWh
Vertical scan range	48 - 75 Hz	AC input voltage	100 - 240 V
Haze rate	25%	AC input frequency	50/60 Hz
Pixel frequency (max)	594 MHz	Energy efficiency scale	A to G
Colour gamut	72%	Computer system	
Ports & interfaces		Operating system installed	Tizen
HDMI ports quantity *	3	Operating system version	7.0
HDMI version	2.0	Weight & dimensions	
HDMI input ports quantity	3	Display width	1456.8 mm
DVI port *	✗	Display depth	28.5 mm
DisplayPorts quantity *	1	Display height	831.9 mm
DisplayPorts in	1	Display weight	22.7 kg
DisplayPort version	1.2	Packaging data	
USB port *	✓	Package width	1616 mm
USB ports quantity	2	Package depth	164 mm
Ethernet LAN *	✓	Package height	945 mm
Ethernet LAN (RJ-45) ports	1	Package volume	29600 cm ³
Wi-Fi *	✓		
Audio (L/R) out	1		

Ports & interfaces		Operational conditions	
RS-232 interface	✓	Operating temperature (T-T)	0 - 40 °C
Infrared data port	✓	Operating relative humidity (H-H)	10 - 80%
Design		Certificates	
Product design *	Digital signage flat panel	Certification	Class B 60950-1, 62368-1
Placement supported *	Indoor	Other features	
Product colour *	Black	Bluetooth	✓
Screen shape	Flat	Flash memory	16000 MB
VESA mounting *	✓	Optional features	WMN-B50SC STN-L6585C



8806094975017

Disclaimer. The information published here (the "Information") is based on sources that can be considered reliable, typically the manufacturer, but this Information is provided "AS IS" and without guarantee of correctness or completeness. The Information is only indicative and can be changed at any time without notification. No rights can be based on the Information. Suppliers or aggregators of this Information do not accept any liability with regard to the content of (web)pages and other documents, including its Information. The publisher of the Information can not be held liable for the content of 3rd party websites that are linking this Information or are linked to from this Information. You as the User of the Information are solely responsible for the choice and usage of this Information. You are not entitled to transfer, copy or otherwise multiply or distribute the Information. You are obliged to follow the directions of the copyright owner(s) with regard to the use of the Information. Exclusively Dutch law is applicable. With regard to price and stock data on the site, the publisher followed a number of starting points, which are not necessarily relevant for your private or business circumstances. Therefore, the price and stock data are only indicative and are subject to changes. You are personally responsible for the way you use and apply this information. As a user of the Information or sites or documents in which this Information is included, you will adhere to standard fair use including avoidance of spamming, ripping, intellectual-property violations, privacy violations, and any other illegal activity.

Publication date: 29-DEC-2024. Prints or copies of Information are only valid on the printed Publication date