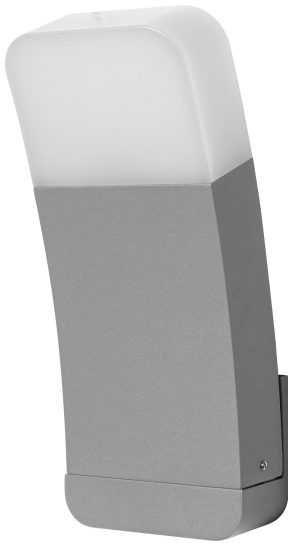


PRODUCT DATASHEET

SMART+ WIFI CURVE SI

SMART+ CURVE MULTICOLOR | Luminaires with WiFi technology



Areas of application

- General illumination
- Gardens
- Patios, balconies

Product benefits

- Easy and quick installation
- Colorful garden lighting with smart and intelligent control options
- Combines the functionality of general lighting and mood lighting

Product features

- Controllable via LEDVANCE SMART+ WiFi App (with minimum Android 4.4 or iOS 9.0)
- Controllable via voice control available: Google Assistant or Amazon Alexa
- RGB color control, approx. 16 million color options adjustable
- Dimmable
- Color temperature: 3,000 K (Warm White)
- Network protocol: WiFi
- Type of protection: IP44



TECHNICAL DATA

Electrical data

Nominal wattage	10.00 W
Nominal voltage	220...240 V
Nominal current	70 mA
Mains frequency	50...60 Hz
Power factor λ	> 0.5
Operating mode	Mains voltage

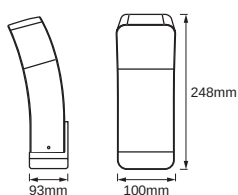
Photometrical data

Light color (designation)	RGBW
Standard deviation of color matching	< 6 sdcn
Nominal luminous flux	550 lm
Luminous flux	550 lm
Luminous efficacy	58 lm/W
Color temperature	3000 K
Color rendering index Ra	≥ 80

Light technical data

Beam angle	260.00 °
Starting time	< 0.5 s

Dimensions & Weight



Product weight	950.00 g
Length	93.00 mm
Width	100.00 mm
Height	248.00 mm

Lifespan

Number of switching cycles	12500
Lifespan	25000 h

Colors & materials

Product color	Silver
Housing color	Silver
Body material	Aluminum
Cover material	Polycarbonate (PC)

Temperatures & operating conditions

Ambient temperature range	-20...+40 °C
---------------------------	--------------

Additional product data

Product remark	Reset settings to default by switching the product on for three seconds and off for three seconds and repeating this five times.
Mounting location	Wall

Capabilities

Dimmable	Yes
Type of connection	Terminal, 3-Pole (L, N, PE)
Compatible smart home technology	Google Assistant / Amazon Alexa
LED module replaceable	Not replaceable

Certificates & Standards

Standards	CE / EAC / REACH / RoHS
Protection class	I
Type of protection	IP44

Energy labelling regulation data acc EU 2019/2015

Correlated colour temperature type	SINGLE_VALUE
Displacement factor	0.70
EPREL ID	1086189
Model number	AC33621

EQUIPMENT / ACCESSORIES

- Mounting screws and dowels included
- Control via app or voice control requires compatible Smart home system
- For control via LEDVANCE SMART + WiFi App, a smart phone or Tablet PC is required

DOWNLOAD DATA**DOWNLOAD DATA**

User instruction
SMART OUTD WIFI CURVE WALL RGBW



Declarations of conformity
CE_SMART OUTD WIFI CURVE WALL RGBW SI

LOGISTICAL DATA

Product code	Packaging unit (Pieces/Unit)	Dimensions (length x width x height)	Gross weight	Volume
4058075478350	Folding box 1	112 mm x 112 mm x 264 mm	1023.00 g	3.31 dm ³
4058075478367	Shipping box 4	278 mm x 238 mm x 249 mm	4463.00 g	16.47 dm ³

The mentioned product code describes the smallest quantity unit which can be ordered. One shipping unit can contain one or more single products. When placing an order, for the quantity please enter single or multiples of a shipping unit.

DISCLAIMER

Subject to change without notice. Errors and omission excepted. Always make sure to use the most recent release.