



# Cisco Integrated Services Routers Generation 2

## Ordering Guide

June 2015

---

# Contents

<b>1. Cisco Integrated Services Routers Generation 2.....</b>	<b>3</b>
1.1 Ordering the Cisco 3900 Series Integrated Services Routers.....	3
1.2 Ordering the Cisco 2900 Series Integrated Services Routers.....	5
1.3 Ordering the Cisco 1900 Series Integrated Services Routers.....	8
1.4 Ordering Common Items across Cisco 3900, 2900, and 1900 Series Routers.....	10
<b>2. Ordering Cisco IOS Software Images and Licenses.....</b>	<b>11</b>
<b>3. Ordering Modules for Cisco Integrated Services Routers Generation 2 .....</b>	<b>14</b>
<b>4. Bundled Systems for Integrated Services Routers Generation 2.....</b>	<b>15</b>
4.1 Security Bundles.....	15
4.2 Unified Communications Bundles .....	17
4.3 Application Services (SRE) Bundles.....	19
4.4 Cisco Unified Computing System Express Bundles.....	20
4.5 Cisco Wide Area Application Services Bundles .....	21
<b>5. Cisco and Partner Services for the Branch Office.....</b>	<b>22</b>
5.1 Technical Services Available for Cisco ISR G2 Products.....	23
<b>6. Additional Information and Marketing Contacts .....</b>	<b>23</b>

## 1. Cisco Integrated Services Routers Generation 2

Cisco® 3900, 2900, and 1900 Series Integrated Services Routers (ISR) build on 25 years of innovation and product leadership. Cisco Integrated Services Routers Generation 2 (ISR G2) are architected to enable the next wave of branch-office evolution, enabling richer media experiences with video, and local compute resources for local application flexibility and survivability. Adding to the rich breadth of services available on the original ISRs - security, unified communications, wireless, and application optimization services - the ISR G2 routers enhance the reduction in overall branch-office expenses with the introduction of flexible services “on demand” through software licensing and simplified Cisco IOS® Software packaging.

As part of the available security services, Cisco Firepower™ Threat Defense for ISR provides the industry-leading threat protection for the entire network surface areas as part of the Cisco Intelligent WAN (IWAN) deployment for hybrid WANs and direct Internet access. With Cisco Firepower services, the ability to detect anomalies, enforce policy, and accelerate mitigation is now built into the ISRs. By using existing ISR G2 and the Cisco 4000 Integrated Services Router, customers gain continuous visibility and control to defeat malware across the extended network and the full attack continuum: before, during, and after an attack.

The ISR G2 portfolio consists of three product families similar to the first generation of ISRs: the Cisco 3900, 2900, and 1900 Series Integrated Services Routers. From the Cisco 1921 through the Cisco 3945E, the portfolio provides increasing performance, module slot density, and features to match the needs of diverse branch offices running varying degrees of rich services.

You can order the platforms as base systems or bundled systems for security, unified communications, or application services. This ordering guide focuses on base system configurations and options, but most of the elements are applicable to bundle ordering as well. For a detailed list of advanced technology bundles on the Cisco ISR G2 routers, please refer to section 4 of this ordering guide.

### 1.1 Ordering the Cisco 3900 Series Integrated Services Routers

The Cisco 3900 Series Integrated Services Routers offer the highest performance and services density among the ISR portfolio. The series comprises the Cisco 3945E, 3925E, 3945, and 3925 routers, which differ primarily in performance capabilities and service-module slot count.

The Cisco 3900 Series ISRs offer a field-replaceable Cisco Services Performance Engine (SPE), which hosts the system route processor, enhanced high-speed WAN interface card (EHWIC) slots, and onboard Ethernet and digital-signal-processor (DSP) slots, an option available uniquely on the Cisco 3900 Series. The SPE is a modular motherboard that you can upgrade with higher-performance engines that will be developed in the future. The Cisco 3945E ships with the Cisco Services Performance Engine (SPE250), the Cisco 3925E ships with the SPE200, the Cisco 3945 ships with the SPE150, and the Cisco 3925 ships with the SPE100. When ordering SPE spares or upgrading, it is important to note that the SPE250 and SPE150 are supported only on Cisco 3945 platforms, whereas the SPE200 and SPE100 are supported on the Cisco 3925 platforms. Table 1 lists the part numbers for the Cisco 3900 Series platforms and SPEs.

**Table 1.** Cisco 3900 Series Platforms and Services Performance Engines

Ordering SKU	Description	Technical Service SKU (Cisco SMARTnet® 8x5xNBD)
<b>CISCO3945E/K9</b>	Cisco 3945E w/SPE250 (4GE, 3EHWIC, 3DSP, 4SM, 256MBCF, 1GBDRAM, IPB)	CON-SNT-3945E
<b>CISCO3925E/K9</b>	Cisco 3925E w/SPE200 (4GE, 3EHWIC, 3DSP, 2SM, 256MBCF, 1GBDRAM, IPB)	CON-SNT-3925E

Ordering SKU	Description	Technical Service SKU (Cisco SMARTnet® 8x5xNBD)
<b>CISCO3945/K9</b>	Cisco 3945 w/SPE150 (3GE, 4EHWIC, 4DSP, 4SM, 256MBCF, 1GBDRAM, IPB)	CON-SNT-3945
<b>CISCO3925/K9</b>	Cisco 3925 w/SPE100 (3GE, 4EHWIC, 4DSP, 2SM, 256MBCF, 1GBDRAM, IPB)	CON-SNT-3925
<b>C3900-SPE250/K9=</b>	Cisco Services Performance Engine 250 for Cisco 3945E ISR (Spare)	Not Applicable
<b>C3900-SPE200/K9=</b>	Cisco Services Performance Engine 200 for Cisco 3925E ISR (Spare)	Not Applicable
<b>C3900-SPE150/K9=</b>	Cisco Services Performance Engine 150 for Cisco 3945 ISR (Spare)	Not Applicable
<b>C3900-SPE100/K9=</b>	Cisco Services Performance Engine 100 for Cisco 3925 ISR (Spare)	Not Applicable

You can order each Cisco 3900 Series platform with dual power supplies that you can configure for power-supply redundancy or increased power for Power over Ethernet (PoE). The primary and secondary power supplies can be AC, PoE, DC, or any combination thereof. In order to power PoE ports on a switch module integrated into a router, you must order the router with a PoE power supply.

You can order the power supplies listed in Table 2 with the system or as spares. The PoE power supply on the Cisco 3900 Series ISRs requires a C15-rated power cable to accommodate the higher current rating of these power supplies.

**Table 2.** Cisco 3900 Series Router Power Supply Options (Offered with the System and as Spares)

Ordering SKU	Description
<b>PWR-3900-AC</b>	Cisco 3925-3945E AC Power Supply (Both system and spare). Spare SKU should be ordered for a Secondary PS of a system already deployed
<b>PWR-3900-AC/2</b>	Cisco 3925-3945E AC Power Supply (Secondary PS) - only as system
<b>PWR-3900-POE</b>	Cisco 3925-3945E AC Power Supply with Power Over Ethernet (Both system and spare)
<b>PWR-3900-POE/2</b>	Cisco 3925-3945E AC Power Supply with Power Over Ethernet (Secondary PS) - only as system
<b>PWR-3900-DC*</b>	Cisco 3925-3945E DC Power Supply (Both system and spare)
<b>PWR-3900-DC/2*</b>	Cisco 3925-3945E DC Power Supply (Secondary PS) - only as system
<b>CAB-C15-ACx</b>	AC Power Cord (country specific SKU), C15, (country-specific plug), (length)

\* The DC versions of power supply will be available in 1HCY10.

The Cisco 3945E, 3925E, 3945, and 3925 ship with a default memory of 1-GB DRAM and 256-MB Compact Flash. The 1-GB DRAM configuration is derived by the installation of two symmetrical dual in-line memory modules (DIMMs) of 512 MB in each of the memory slots on the SPE of the Cisco 3900 Series platforms. When upgrading memory to higher densities, both memory slots must be populated with DIMMs of symmetrical type and density for high system performance. The Cisco 3900 Series does not support the use of different DRAM densities in the two available DIMM slots or the use of only one slot. The memory type and part numbers are shared among all Cisco 3900 Series platforms, as listed in Table 3.

**Table 3.** Cisco 3900 Series Routers DRAM (Factory Upgrades and Spares)

Ordering SKU	Description
<b>MEM-3900-1GU4GB</b>	1GB to 4GB DRAM Upgrade (2GB+2GB) for Cisco 3925/3945 ISR
<b>MEM-3900-1GB-DEF</b>	1GB DRAM (512MB+512MB) for Cisco 3925-3945E ISR (Default)
<b>MEM-3900-1GU2GB</b>	1GB to 2GB DRAM Upgrade (1GB+1GB) for Cisco 3925-3945E ISR

Ordering SKU	Description
<b>MEM-3900-512MB=</b>	512MB DRAM for Cisco 3925-3945E ISR (only as spare)
<b>MEM-3900-1GB=</b>	1GB DRAM for Cisco 3925-3945E ISR (only as spare)

The Compact Flash part numbers in Table 4 are shared across all the routers in the Cisco ISR G2 portfolio. Compact Flash slot 0 is populated with a 256-MB Compact Flash by default from the factory. There is an additional Compact Flash slot 1 that you can optionally configure and order with another Compact Flash of desired density.

**Table 4.** Cisco 3900 Series Routers Compact Flash (Factory Upgrades and Spares)

Ordering SKU	Description
<b>MEM-CF-256U4GB</b>	256MB to 4GB Compact Flash Upgrade for Cisco 1900, 2900, 3900 ISR
<b>MEM-CF-256U2GB</b>	256MB to 2GB Compact Flash Upgrade for Cisco 1900, 2900, 3900 ISR
<b>MEM-CF-256U1GB</b>	256MB to 1GB Compact Flash Upgrade for Cisco 1900, 2900, 3900 ISR
<b>MEM-CF-256U512MB</b>	256MB to 512MB CF Upgrade for Cisco 1900, 2900, 3900 ISR
<b>MEM-CF-256MB</b>	256MB Compact Flash for Cisco 1900, 2900, 3900 ISR (Default)
<b>MEM-CF-4GB=</b>	4GB Compact Flash (Spare) for Cisco 1900, 2900, 3900 ISR (only as spare)
<b>MEM-CF-2GB=</b>	2GB Compact Flash (Spare) for Cisco 1900, 2900, 3900 ISR (only as spare)
<b>MEM-CF-1GB=</b>	1GB Compact Flash (Spare) for Cisco 1900, 2900, 3900 ISR (only as spare)
<b>MEM-CF-512MB=</b>	512MB Compact Flash (Spare) for Cisco 1900, 2900, 3900 ISR (only as spare)
<b>MEM-CF-256MB=</b>	256MB Compact Flash (Spare) for Cisco 1900, 2900, 3900 ISR (only as spare)

The Cisco 3900 Series routers ship with a default fan assembly that drives “business-to-bezel” airflow in the router chassis. An alternate, optional fan assembly provides a “bezel-to-business” airflow and includes an air filter appropriate for dusty operation environments or Network Equipment Building Standards (NEBS) installations. You can configure either fan assembly with the system or order them as spares if needed. You can also order spare air filters to allow for periodic maintenance and replacement. Additionally, the cover for the redundant power supply (RPS) on the Cisco 3900 Series is orderable as a spare. Table 5 lists the part numbers for Cisco 3900 Series fan-related products.

**Table 5.** Cisco 3900 Series Routers Fan-Related Products

Ordering SKU	Description
<b>3900-FANASSY</b>	Cisco 3925-3945E Fan Assembly (Both system & spare)
<b>3900-FANASSY-NEBS</b>	Cisco 3925/3945 Fan Assembly for NEBS w/3900-FANFLTR-NEBS & Bezel (Both system & spare)
<b>RPS-COVER-3900=</b>	Cover for empty 2 <sup>nd</sup> Power Supply slot on Cisco 3925 - 3945E(only as spare)

## 1.2 Ordering the Cisco 2900 Series Integrated Services Routers

The Cisco 2900 Series Integrated Service Routers comprise four platforms: the Cisco 2901, 2911, 2921, and 2951 ISRs with part numbers shown in Table 6.

**Table 6.** Cisco 2900 Series Integrated Services Routers

Ordering SKU	Description	Technical Service SKU (SMARTnet 8x5XNBD)
<b>CISCO2951/K9</b>	Cisco 2951 w/3 GE, 4 EHWIC, 3 DSP, 2 SM, 256MB CF, 512MB DRAM, IPB	CON-SNT-2951
<b>CISCO2921/K9</b>	Cisco 2921 w/3 GE, 4 EHWIC, 3 DSP, 1 SM, 256MB CF, 512MB DRAM, IPB	CON-SNT-2921
<b>CISCO2911/K9</b>	Cisco 2911 w/3 GE, 4 EHWIC, 2 DSP, 1 SM, 256MB CF, 512MB DRAM, IPB	CON-SNT-2911
<b>CISCO2901/K9</b>	Cisco 2901 w/2 GE, 4 EHWIC, 2 DSP, 256MB CF, 512MB DRAM, IPB	CON-SNT-2901

You can order Cisco 2911, 2921, and 2951 with a power supply that is AC, PoE, or DC. During product configuration you must select the type of power supply and the power-supply cable you need for use in a particular country. These platforms also offer power redundancy with the use of an external RPS device (Cisco Redundant Power System 2300 [RPS 2300]). A RPS adapter is needed in order to connect a Cisco 2911, 2921, or 2951 to the external RPS device. You can order the Cisco 2901 with an AC or PoE power supply. The Cisco 2901 does not offer a DC version of power supply and it does not support an external RPS.

You can order the power supply and RPS adapter part numbers in Table 7 with the router or as spares. In order to power ports on a switch module plugged into a router, it is important to order the router with PoE power supply. Note that the Cisco 2921 and Cisco 2951 have the same part numbers.

**Table 7.** Cisco 2900 Series Router Power Supply and RPS Adapter Options (Factory Options and Spares)

Ordering SKU	Description
<b>PWR-2921-51-AC</b>	Cisco 2921/2951 AC Power Supply (Both system & spare)
<b>PWR-2911-AC</b>	Cisco 2911 AC Power Supply (Both system & spare)
<b>PWR-2901-AC</b>	Cisco 2901 AC Power Supply (Both system & spare)
<b>PWR-2921-51-POE</b>	Cisco 2921/2951 AC Power Supply with Power Over Ethernet (Both system & spare)
<b>PWR-2911-POE</b>	Cisco 2911 AC Power Supply with Power Over Ethernet (Both system & spare)
<b>PWR-2901-POE</b>	Cisco 2901 AC Power Supply with Power Over Ethernet (Both system & spare)
<b>PWR-2921-51-DC**</b>	Cisco 2921/2951 DC Power Supply (Both system & spare)
<b>PWR-2911-DC*</b>	Cisco 2911 DC Power Supply (Both system & spare)
<b>RPS-ADPTR-2921-51</b>	Cisco 2921/2951 RPS Adapter for use with External RPS (Both system & spare)
<b>RPS-ADPTR-2911</b>	Cisco 2911 RPS Adapter for use with External RPS (Both system & spare)

\* The DC versions of power supply for the Cisco 2911 will be available in 1HCY10.

\*\* The DC versions of power supply for the Cisco 2951 and 2921 will be available in CY10.

All the Cisco 2900 Series base platforms ship with a default memory of 512-MB DRAM and 256-MB Compact Flash. The default Cisco 2951 has a unique memory configuration, whereby a 512-MB DIMM is installed in one of the two memory slots on the router. Memory upgrades on the Cisco 2951 can involve an increase in the density of that single DIMM or a combination of DIMMs with both slots populated. The Cisco 2951 allows the use of asymmetric densities of DRAM in both slots. On the Cisco 2921, 2911, and 2901, the default DRAM of 512 MB is soldered onto the motherboard. Hence, memory upgrades will populate the remaining memory slot in densities of 512 MB, 1 GB, and 2 GB. DRAM part numbers are shared across the Cisco 2921, 2911, and 2901, and you cannot use them on a Cisco 2951. Likewise, you cannot use the Cisco 2951 DRAM memory on other Cisco 2900 Series platforms. Table 8 gives DRAM information about the Cisco 2900 Series routers.

**Table 8.** Cisco 2900 Series Routers DRAM (Factory Upgrades and Spares)

Ordering SKU	Description
<b>MEM-3900-1GU4GB</b>	1GB to 4GB DRAM Upgrade (2GB+2GB) for Cisco 3925/3945 ISR
<b>MEM-2951-512MB-DEF</b>	512MB DRAM (1 512MB DIMM) for Cisco 2951 ISR (Default)
<b>MEM-2951-512U2GB</b>	512MB to 2GB DRAM Upgrade (1 2GB DIMM) for Cisco 2951 ISR
<b>MEM-2951-512U1.5GB</b>	512MB to 1.5GB DRAM Upgrade (1GB+512MB) for Cisco 2951 ISR
<b>MEM-2951-512U1GB</b>	512MB to 1GB DRAM Upgrade (1 1GB DIMM) for Cisco 2951 ISR
<b>MEM-2951-2GB=</b>	2GB DRAM for Cisco 2951 ISR (only as spare)
<b>MEM-2951-1GB=</b>	1GB DRAM for Cisco 2951 ISR (only as spare)

Ordering SKU	Description
<b>MEM-2951-512MB=</b>	512MB DRAM for Cisco 2951 ISR (only as spare)
<b>MEM-2900-512MB-DEF</b>	512MB DRAM for Cisco 2901-2921 ISR (Default)
<b>MEM-2900-512U2.5GB</b>	512MB to 2.5GB DRAM Upgrade (2GB+512MB) for Cisco 2901-2921
<b>MEM-2900-512U1.5GB</b>	512MB to 1.5GB DRAM Upgrade (1GB+512MB) for Cisco 2901-2921
<b>MEM-2900-512U1GB</b>	512MB to 1GB DRAM Upgrade (512MB+512MB) for Cisco 2901-2921
<b>MEM-2900-2GB=</b>	2GB DRAM for Cisco 2901, 2911, 2921 ISR (only as spare)
<b>MEM-2900-1GB=</b>	1 GB DRAM for Cisco 2901, 2911, 2921 ISR (only as spare)
<b>MEM-2900-512MB=</b>	512MB DRAM for Cisco 2901, 2911, 2921 ISR (only as spare)

The Compact Flash part numbers in Table 9 are shared across all the platforms in the Cisco ISR G2 portfolio. Compact Flash slot 0 is populated with a 256-MB Compact Flash by default from the factory. You can optionally configure and order an additional Compact Flash slot 1 with another Compact Flash of desired density.

**Table 9.** Cisco 2900 Series Routers Compact Flash (Factory Upgrades and Spares)

Ordering SKU	Description
<b>MEM-CF-256U4GB</b>	256MB to 4GB Compact Flash Upgrade for Cisco 1900, 2900, 3900 ISR
<b>MEM-CF-256U2GB</b>	256MB to 2GB Compact Flash Upgrade for Cisco 1900, 2900, 3900 ISR
<b>MEM-CF-256U1GB</b>	256MB to 1GB Compact Flash Upgrade for Cisco 1900, 2900, 3900 ISR
<b>MEM-CF-256U512MB</b>	256MB to 512MB CF Upgrade for Cisco 1900, 2900, 3900 ISR
<b>MEM-CF-256MB</b>	256MB Compact Flash for Cisco 1900, 2900, 3900 ISR (Default)
<b>MEM-CF-4GB=</b>	4GB Compact Flash (Spare) for Cisco 1900, 2900, 3900 ISR (only as spare)
<b>MEM-CF-2GB=</b>	2GB Compact Flash (Spare) for Cisco 1900, 2900, 3900 ISR (only as spare)
<b>MEM-CF-1GB=</b>	1GB Compact Flash (Spare) for Cisco 1900, 2900, 3900 ISR (only as spare)
<b>MEM-CF-512MB=</b>	512MB Compact Flash (Spare) for Cisco 1900, 2900, 3900 ISR (only as spare)
<b>MEM-CF-256MB=</b>	256MB Compact Flash (Spare) for Cisco 1900, 2900, 3900 ISR (only as spare)

You can order the fan assemblies on all the Cisco 2900 Series as spares if needed. An air filter is offered on the Cisco 2911 for dusty environments or NEBS deployments. You can order the filters along with the system or as spares for periodic maintenance and replacement. You can order the cover for the RPS slot on the Cisco 2951, 2921, and 2911 as spares. The same fan assembly is shared between the Cisco 2951 and 2921. Similarly, a fan blower assembly is shared between the Cisco 2901 and 1941 routers. Table 10 lists the fan-related products for the Cisco 2900 Series routers.

**Table 10.** Cisco 2900 Series Routers Fan-Related Products

Ordering SKU	Description
<b>2921-51-FANASSY=</b>	Cisco 2921/2951 Fan Assembly and Bezel (only as spare)
<b>2911-FANASSY=</b>	Cisco 2911 Fan Assembly (no Bezel included) (only as spare)
<b>2911-FANFLTR-NEBS</b>	Cisco 2911 Fan Filter for NEBS environment (Both system & spare)
<b>2911-AIRCVTR-NEBS=</b>	Cisco 2911 Front-to-Back Air Flow Converter for NEBS use (only as spare)
<b>1941-2901-FANBLWR=</b>	Cisco 1941/2901 Fan Blower Assembly (only as spare)
<b>RPS-COVER-2921-51=</b>	Cover for empty RPS Adapter slot on Cisco 2921/2951 (only as spare)
<b>RPS-COVER-2911=</b>	Cover for empty RPS Adapter slot on Cisco 2911 (only as spare)

### 1.3 Ordering the Cisco 1900 Series Integrated Services Routers

The Cisco 1900 Integrated Services Routers have primarily two series, the Cisco 1941 and Cisco 1921. With five times the performance of the Cisco 1841, the Cisco 1941 is positioned for high-performance security, Metro Ethernet, high-density switching, and integrated wireless solutions. The Cisco 1921 Series, with three times the performance of the Cisco 1841, is targeted at the broad range of broadband solutions currently offered by Cisco 1841: Serial, T1/E1, and xDSL.

The Cisco 1941 ISR supports two models: the Cisco 1941 and the Cisco 1941W, a wireless version. The Cisco 1941W is delivered from Cisco with an internal module for an 802.11 a/b/g/n wireless LAN (WLAN) access point. Because the radio settings are country- and region-specific, the Cisco 1941W has part-number variants that offer these region-specific solutions; part numbers are listed in Table 11.

**Table 11.** Cisco 1900 Series Integrated Services Routers

Cisco 1941 Ordering SKU	Description	Technical Service SKU (SMARTnet 8x5xNBD)
<b>CISCO1941W-A/K9</b>	Cisco 1941 Router w/802.11 a/b/g/n FCC Compliant WLAN ISM	CON-SNT-1941WA
<b>CISCO1941W-C/K9</b>	Cisco 1941 Router w/802.11 a/b/g/n China Compliant WLAN ISM	CON-SNT-1941WC
<b>CISCO1941W-E/K9</b>	Cisco 1941 Router w/802.11 a/b/g/n ETSI Compliant WLAN ISM	CON-SNT-1941WE
<b>CISCO1941W-P/K9</b>	Cisco 1941 Router w/802.11 a/b/g/n Japan Compliant WLAN ISM	CON-SNT-1941WP
<b>CISCO1941W-N/K9</b>	Cisco 1941 Router w/802.11 a/b/g/n Aus, NZ Compliant WLAN ISM	CON-SNT-1941WN
<b>CISCO1941/K9</b>	Cisco 1941 w/2 GE, 2 EHWIC slots, 256MB CF, 512MB DRAM, IP Base	CON-SNT-1941
<b>CISCO1921/K9</b>	CISCO 1921 Modular Router, 2 GE, 2 EHWIC slots, 256F/512D, IP Base Lic	CON-SNT-1921
<b>CISCO1921-ADSL2/K9</b>	Cisco 1921 ADSL2+ Bundle, HWIC-1ADSL, 256F/512D, IP Base Lic	CON-SNT-1921DSL2
<b>C1921-ADSL2-M/K9</b>	Cisco 1921 ADSL2 Annex M Bundle, HWIC-1ADSL-M, 256F/512D, IP Base Lic	CON-SNT-1921AD2M
<b>C1921-4SHDSL/K9</b>	Cisco 1921 4-pair G.SHDSL Bundle, HWIC-4SHDSL, 256F/512D, IP Base Lic	CON-SNT-19214DSL

You can order the Cisco 1941 with an AC or PoE type of power supply. The Cisco 1941 does not offer a DC version of the power supply, and it does not support an external RPS.

The Cisco 1921 ships with an integrated AC power supply by default, and you do not need to select the AC power supply. In order to power ports on a switch module in a Cisco 1921 or 1941, you must order the router with a PoE power supply. For the Cisco 1921, the PoE power supply is external to the router. Table 12 lists the part numbers for the Cisco 1900 Series power supplies.

**Table 12.** Cisco 1900 Series Router Power-Supply Options

Cisco 1941 Ordering SKU	Description
<b>PWR-1941-AC</b>	Cisco 1941 AC Power Supply (Both system & spare)
<b>PWR-1941-POE</b>	Cisco 1941 AC Power Supply with Power Over Ethernet (Both system & spare)
<b>CISCO 1921 AC Power Supply</b>	Included by default and does not require user selection
<b>PWR-1900-POE</b>	Cisco 1905, Cisco 1921 Power Over Ethernet Power Supply



The Cisco 1921 ISRs are offered in a fixed-memory configuration, whereas the Cisco 1941 ISRs are offered in an expandable memory configuration. Cisco 1921 ISRs support an internal 256-MB embedded USB (eUSB) flash and an internal soldered 512-MB DRAM memory. On Cisco 1941 and 1941W routers, the default DRAM of 512 MB is also soldered onto the motherboard. Memory upgrades on the Cisco 1941 are available as modular DIMMs in densities of 512 MB, 1 GB, and 2 GB. Table 13 lists part numbers for Cisco 1900 Series DRAM.

**Table 13.** Cisco 1900 Series Routers DRAM

Cisco 1941 Ordering SKU	Description
<b>MEM-1900-512MB-DEF</b>	512MB DRAM for Cisco 1941 ISR (Default)
<b>MEM-1900-512U2.5GB</b>	512MB to 2.5GB DRAM Upgrade (2GB+512MB) for Cisco 1941 ISR
<b>MEM-1900-512U1.5GB</b>	512MB to 1.5GB DRAM Upgrade (1GB+512MB) for Cisco 1941 ISR
<b>MEM-1900-512U1GB</b>	512MB to 1GB DRAM Upgrade (512MB+512MB) for Cisco 1941 ISR
<b>MEM-1900-2GB=</b>	2GB DRAM for Cisco 1941/1941W ISR (only as spare)
<b>MEM-1900-1GB=</b>	1GB DRAM for Cisco 1941/1941W ISR (only as spare)
<b>MEM-1900-512MB=</b>	512MB DRAM for Cisco 1941/1941W ISR (only as spare)
<b>DRAM memory upgrade</b>	None available; Fixed 512MB DRAM only

The Compact Flash part numbers in Table 14 are shared across all the routers in the Cisco ISR G2 portfolio. Compact Flash slot 0 is populated with a 256-MB Compact Flash by default from the factory. You can order an additional Compact Flash slot 1 that you can configure with another Compact Flash of desired density.

**Table 14.** Cisco 1900 Series Routers Compact Flash

Cisco 1941 Ordering SKU	Description
<b>MEM-CF-256U4GB</b>	256MB to 4GB Compact Flash Upgrade for Cisco 1900, 2900, 3900 ISR
<b>MEM-CF-256U2GB</b>	256MB to 2GB Compact Flash Upgrade for Cisco 1900, 2900, 3900 ISR
<b>MEM-CF-256U1GB</b>	256MB to 1GB Compact Flash Upgrade for Cisco 1900, 2900, 3900 ISR
<b>MEM-CF-256U512MB</b>	256MB to 512MB CF Upgrade for Cisco 1900, 2900, 3900 ISR
<b>MEM-CF-256MB</b>	256MB Compact Flash for Cisco 1900, 2900, 3900 ISR (Default)
<b>MEM-CF-4GB=</b>	4GB Compact Flash (Spare) for Cisco 1900, 2900, 3900 ISR (only as spare)
<b>MEM-CF-2GB=</b>	2GB Compact Flash (Spare) for Cisco 1900, 2900, 3900 ISR (only as spare)
<b>MEM-CF-1GB=</b>	1GB Compact Flash (Spare) for Cisco 1900, 2900, 3900 ISR (only as spare)
<b>MEM-CF-512MB=</b>	512MB Compact Flash (Spare) for Cisco 1900, 2900, 3900 ISR (only as spare)
<b>MEM-CF-256MB=</b>	256MB Compact Flash (Spare) for Cisco 1900, 2900, 3900 ISR (only as spare)
<b>Flash memory upgrade</b>	None available; Fixed internal 256MB eUSB Flash only

You can order a spare of the fan blower on the Cisco 1941 if needed (Table 15).

**Table 15.** Cisco 1900 Series Routers Fan-Related Products

Ordering SKU	Description
<b>1941-2901-FANBLWR=</b>	Cisco 1941/2901 Fan Blower Assembly (only as spare)

## 1.4 Ordering Common Items across Cisco 3900, 2900, and 1900 Series Routers

Each of the routers in the Cisco ISR G2 portfolio (except the Cisco 1921) ships with a default accessory kit consisting of:

- 19-inch rack-mount brackets (for the Cisco 1921, you must order the rack-mount kit because it does not ship by default)
- Regulatory and Compliance Safety Information (RCSI) guide

The default accessory kit does not include any Category 5 RJ-45 Ethernet cables or cables for the router console or auxiliary port. You can order the console and auxiliary cables as an option during router configuration or as spares. The Cisco ISR G2 routers offer an innovative USB-based console port, which needs a separate console cable.

You can order the 23-inch rack-mount brackets, the blank faceplates for module slots, and slot dividers as spares (Table 16). There is a blank faceplate spare for the service-module slot (SM-BLANK-KIT=) that is unique to the Cisco 2921 and 3925 to cover the gap left behind on removal of doublewide service modules. This part number is a combination of the service-module blank attached to the service-module slot divider to create an L-shaped piece. Under normal usage with singlewide service modules, this area is covered by a blank faceplate and does not allow for insertion of any singlewide service module.

Similarly, for the Cisco 1941, there is a high-speed WAN interface card (HWIC) blank faceplate spare (HWIC-BLANK-KIT=) to cover the gap left behind from the removal of doublewide HWICs. This part number is a combination of the HWIC blank attached to the HWIC slot divider to form an L-shaped piece.

Opacity shields are also available on the Cisco 1921, 2900, and 3900 ISRs that meet the Federal Information Processing Standards Publications (FIPS) 140-3 Level 2 opacity requirement. Opacity shields are not required for the Cisco 1941 because the router ships with a solid cover and the router interior is not exposed. Table 16 lists the part numbers for cables, rack-mount brackets, blank faceplates, and FIPS shields for the Cisco 3900, 2900, and 1900 Series ISRs.

**Table 16.** Cables, Rack-Mount Brackets, Blank Faceplates, and FIPS Shields for Cisco 3900, 2900, and 1900 Series Routers

Ordering SKU	Description
<b>CAB-CONSOLE-RJ45</b>	Console Cable 6ft with RJ45 and DB9F (Both system and spare)
<b>CAB-AUX-RJ45</b>	Auxiliary Cable 8ft with RJ45 and DB25M (Both system and spare)
<b>CAB-CONSOLE-USB</b>	Console Cable 6 ft with USB Type A and mini-B connectors (Both system and spare)
<b>ACS-3900-RM-23=</b>	23 inch rack mount kit for Cisco 3925 - 3945EISR (only as spare)
<b>ACS-3900-RM-19(=)</b>	19 inch rack mount kit for Cisco 3925 - 3945E ISR.
<b>ACS-2900-RM-23=</b>	23 inch rack mount kit for Cisco 2911/2921/2951 ISR (only as spare)
<b>ACS-2900-RM-19(=)</b>	19 inch rack mount kit for Cisco 2911, 2921, 2951 ISR
<b>ACS-2901-RM-23=</b>	23 inch rack mount kit for Cisco 2901 ISR (only as spare)
<b>ACS-2901-RM-19(=)</b>	19 inch rack mount kit for Cisco 2901 & 891-24X ISR
<b>ACS-1900-RM-19(=)</b>	19 inch rack mount kit for Cisco 1905 &1921 ISR
<b>ACS-1941-RM-19=</b>	19 inch rack mount kit for Cisco 1941 &1941W ISR
<b>SM-S-BLANK=</b>	Removable faceplate for SM slot on Cisco 2900, 3900 ISR (only as spare)
<b>SM-BLANK-KIT=</b>	Blank faceplate for SM slot with divider on Cisco 2951 & 3925 (only as spare)
<b>HWIC-BLANK=</b>	Blank faceplate for HWIC/EHWIC slot on Cisco ISR (only as spare)
<b>HWIC-BLANK-KIT=</b>	Blank faceplate for HWIC slot with divider for Cisco1941 ISR (only as spare)

Ordering SKU	Description
<b>HWIC-SLOT-DIVIDER=</b>	HWIC/EHWIC Slot Divider (Guide) for Cisco 1900, 2900, 3900 ISR (only as spare)
<b>SM-SLOT-DIVIDER=</b>	SM Slot Divider (Guide) for Cisco 2900, 3900 ISR (only as spare)
<b>ACS-CF-COVER=</b>	Compact Flash Cover (Guard) for Cisco 1900, 2900, 3900 ISR (only as spare)
<b>FIPS-SHIELD-3900=</b>	FIPS opacity shield for Cisco 3925 - 3945EISR
<b>FIPS-SHIELD-2921=</b>	FIPS opacity shield for Cisco 2921 ISR
<b>FIPS-SHIELD-2951=</b>	FIPS opacity shield for Cisco 2951 ISR
<b>FIPS-SHIELD-2911=</b>	FIPS opacity shield for Cisco 2911 ISR
<b>FIPS-SHIELD-2901=</b>	FIPS opacity shield for Cisco 2901 ISR
<b>FIPS-SHIELD-1900=</b>	FIPS opacity shield for Cisco 1905, Cisco 1921 ISR

Cisco Configuration Professional is a device-configuration application that supports configuration of the Cisco ISR G2 routers. By default, the platforms ship with Cisco Configuration Professional Express installed on the Compact Flash in slot 0 (ISR-CCP-EXP). A full version of Cisco Configuration Professional is available as a free download on Cisco.com, or you can order a CD with a new ISR system. To order a full copy of the Cisco Configuration Professional software, select one of the CD option part numbers during router configuration or order it as a spare later (Table 17).

**Table 17.** Cisco Configuration Professional for Cisco 3900, 2900, and 1900 Series Routers

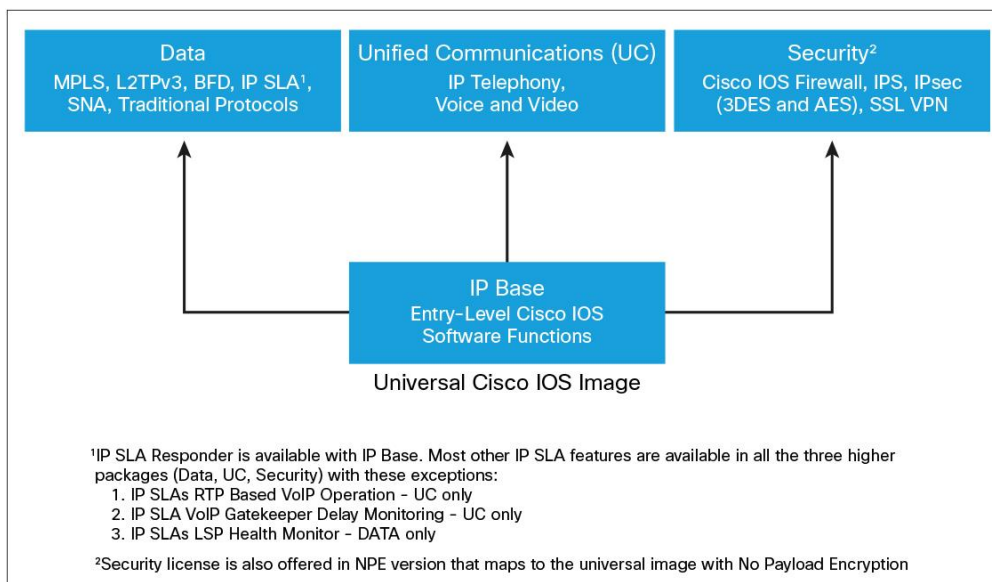
Ordering SKU	Description
<b>ISR-CCP-EXP</b>	Cisco Config Pro Express on Router Flash
<b>ISR-CCP-EXP-NOCONF</b>	Cisco Config Pro Express on Router Flash w/o default config
<b>ISR-CCP-CD</b>	Cisco Config Professional on CD, CCP-Express on Router Flash (Both system and spare)
<b>ISR-CCP-CD-NOCONF</b>	Cisco Config Pro on CD, CCP-Express on CF w/o default config

## 2. Ordering Cisco IOS Software Images and Licenses

Cisco ISRs deliver innovative technologies running on the industry-leading Cisco IOS Software.

Cisco ISR G2 routers ship with a universal Cisco IOS Software image that contains all the features available for use on the routers. A specific feature set is activated by using technology package licenses such as Security, Unified Communications, and Data. Figure 1 shows the Cisco IOS Software packaging model for the Cisco 3900, 2900, and 1900 Series Integrated Services Routers.

**Figure 1.** Cisco IOS Software Packaging Model for Cisco 3900, 2900, and 1900 Series Integrated Services Routers



Two types of universal images are supported on Cisco ISR G2 routers:

- **Universal images with the universalk9 in the image name:** This universal image offers all the Cisco IOS Software features, including strong payload cryptography features such as IP Security VPN (IPsec VPN), Secure Sockets Layer VPN (SSL VPN), and Secure Unified Communications.
- **Universal images with the universalk9\_npe in the image name:** The strong control of encryption capabilities by Cisco Software Activation helps meet U.S. export control requirements for cryptography. However, some countries have import requirements that require that the platform does not support any strong payload cryptography. To satisfy the import requirements of those countries, Cisco allows you to order the router with an “npe” universal image that does not support any strong payload encryption. The npe image does support security features such as zone-based firewall and intrusion prevention through the SECNPE-K9 license.

For a given type and version of the universal Cisco IOS Software image, both the Cisco 3945E and 3925 share the same Cisco IOS Software image; the Cisco 3945 and 3925 share another Cisco IOS Software image. Similarly, the Cisco 1921 and 1941 and Cisco 1941W routers share the same universal Cisco IOS Software image. Within the Cisco 2900 Series product family, the Cisco 2901, 2911, and 2921 share the universal Cisco IOS Software images for a given type and version. The Cisco 2951 has its own unique Cisco IOS Software image different from the rest of the Cisco 2900 Series images. Table 18 lists part numbers for universal Cisco IOS Software images for the Cisco 3900, 2900, and 1900 Series ISRs.

**Table 18.** Part Numbers for Universal Cisco IOS Software Image for Cisco 3900, 2900, and 1900 Series Routers (for Releases 15.1(4)M)

Ordering SKU	Description
S39EUK9-15014M	Cisco IOS universal Image for 3945E/3925E
S39UK9-15014M	Cisco IOS universal Image for 3945/3925
S2951UK9-15014M	Cisco IOS universal Image for 2951
S29UK9-15014M	Cisco IOS universal Image for 2901-2921

Ordering SKU	Description
<b>S19UK9-15014M</b>	Cisco IOS universal Image for 1941, 1921
<b>S39ENPEK9-15014M</b>	Cisco IOS univ. Image (No Payload Encryption) for 3945E/3925E
<b>S39NPEK9-15014M</b>	Cisco IOS univ. Image (No Payload Encryption) for 3945/3925
<b>S2951NPEK9-15014M</b>	Cisco IOS universal Image (No Payload Encryption) for 2951
<b>S29NPEK9-15014M</b>	Cisco IOS univ. Image (No Payload Encryption) for 2901-2921
<b>S19NPEK9-15014M</b>	Cisco IOS universal Image (No Payload Encryption) for 1941, 1921

By default, all the routers ship with an IP Base license. You can order the routers from the factory with technology licenses preinstalled using the paper license part numbers (start with the keyword “SL”). Alternately, if you plan to deploy the advanced technology features later, you can order the required licenses as spares. You can order spares for technology licenses as paper licenses or e-delivery licenses (start with keyword “L-SL”).

For a given technology, the license product part numbers are common for routers in a particular product family; for example, the IP Base license part number is common across the Cisco 2901, 2911, 2921, and 2951. The part numbers vary across the platform family, as listed in Table 19.

**Table 19.** IP Base Licenses for Cisco 3900, 2900, and 1900 Series Routers - Maps to Both Types of Universal Images

Ordering SKU	Description
<b>SL-39-IPB-K9</b>	IP Base License (Paper) for Cisco 3945E-3925
<b>SL-29-IPB-K9</b>	IP Base License (Paper) for Cisco 2951-3901
<b>SL-19-IPB-K9</b>	IP Base License (Paper) for Cisco 1941, 1921

You can use the security licenses in Table 20 to activate the advanced security features offered on the Cisco 3900, 2900, and 1900 Series platforms. You can order these part numbers only for the universal image that supports payload cryptography.

**Table 20.** Security Licenses for Cisco 3900, 2900, and 1900 Series Routers - Maps to universalk9 Image

Ordering SKU	Description
<b>SL-39-SEC-K9</b>	Security License (Paper) for Cisco 3945E-3925 (Both system & spare)
<b>SL-29-SEC-K9</b>	Security License (Paper) for Cisco 2951-2901 (Both system & spare)
<b>SL-19-SEC-K9</b>	Security License (Paper) for Cisco 1941, 1921 (Both system & spare)
<b>L-SL-39-SEC-K9=</b>	Security PAK (E-Delivery) for Cisco 3945E-3925 (only as spare)
<b>L-SL-29-SEC-K9=</b>	Security PAK (E-Delivery) for Cisco 2951-2901 (only as spare)
<b>L-SL-19-SEC-K9=</b>	Security PAK (E-Delivery) for Cisco 1941, 1921 (only as spare)

For activating security features on the universal image with no payload encryption, the security license part numbers are unique, as listed in Table 21.

**Table 21.** Security Licenses (No Payload Encryption) for Cisco 3900, 2900, and 1900 Series Routers - Maps to universalk9\_npe Image

Ordering SKU	Description
<b>SL-39-SECNPE-K9</b>	Security No Payload Encryption (Paper) License for Cisco 3945E-3925 (System & spare)
<b>SL-29-SECNPE-K9</b>	Security No Payload Encryption (Paper) License for Cisco 2951-2901 (System & spare)
<b>SL-19-SECNPE-K9</b>	Security No Payload Encryption (Paper) License for Cisco 1941, 1921 (System & spare)
<b>L-SL-39-SECNPE-K9=</b>	Security No Payload Encryption PAK (E-Delivery) for Cisco 3945E-3925 (only as spare)
<b>L-SL-29-SECNPE-K9=</b>	Security No Payload Encryption PAK (E-Delivery) for Cisco 2951-2901 (only as spare)
<b>L-SL-19-SECNPE-K9=</b>	Security No Payload Encryption PAK (E-Delivery) for Cisco 1941, 1921 (only as spare)

For activating unified communications features on the Cisco 2900 and 3900 Series routers, the Unified Communications license part numbers are listed in Table 22.

**Table 22.** Unified Communications License for Cisco 3900 and 2900 Series Routers - Maps to Both Images

Ordering SKU	Description
<b>SL-39-UC-K9</b>	Unified Commn. License (Paper) for Cisco 3945E-3925 (Both system & spare)
<b>SL-29-UC-K9</b>	Unified Commn. License (Paper) for Cisco 2951-2901 (Both system & spare)
<b>L-SL-39-UC-K9=</b>	Unified Commn. PAK (E-Delivery) for Cisco 3945E-3925 (only as spare)
<b>L-SL-29-UC-K9=</b>	Unified Commn. PAK (E-Delivery) for Cisco 2951-2901 (only as spare)

You can use the Data license in Table 23 to activate the data features offered on the Cisco 3900, 2900, and 1900 Series routers.

**Table 23.** Data Licenses for Cisco 3900 and 2900 Series Routers - Maps to Both Universal Images

Ordering SKU	Description
<b>SL-39-DATA-K9</b>	Data License (Paper) for Cisco 3945E-3925 (Both system & spare)
<b>SL-29-DATA-K9</b>	Data License (Paper) for Cisco 2951-2901 (Both system & spare)
<b>SL-19-DATA-K9</b>	Data License (Paper) for Cisco 1941, 1921 (Both system & spare)
<b>L-SL-39-DATA-K9=</b>	Data PAK (E-Delivery) for Cisco 3945E-3925 (only as spare)
<b>L-SL-29-DATA-K9=</b>	Data PAK (E-Delivery) for Cisco 2951-2901 (only as spare)
<b>L-SL-19-DATA-K9=</b>	Data PAK (E-Delivery) for Cisco 1941, 1921 (only as spare)

The Cisco 3900, 2900, and 1900 Series routers also offer a wide variety of feature and subscription licenses for advanced security and unified communications functions such as Cisco Unified Communications Manager Express (Unified CME), Survivable Remote Site Telephony (SRST), Cisco Unified Border Element, SSL VPN, and Cisco IOS IPS. You need these licenses in addition to the technology license for a given solution deployment. Please refer to the Licensing Deployment Guide for a complete list of feature and subscription licenses at: <http://www.cisco.com/en/US/products/ps10616/index.html>.

### 3. Ordering Modules for Cisco Integrated Services Routers Generation 2

Most of the existing modules from the original Cisco ISRs are supported on the Cisco ISR G2 portfolio. For a complete list of supported and unsupported modules, please refer to the Cisco Relevant Modules and Interfaces document for each product family:

- Cisco 3900 Series Relevant Modules and Interfaces:  
[http://www.cisco.com/en/US/products/ps10536/products\\_relevant\\_interfaces\\_and\\_modules.html](http://www.cisco.com/en/US/products/ps10536/products_relevant_interfaces_and_modules.html)
- Cisco 2900 Series Relevant Modules and Interfaces:  
[http://www.cisco.com/en/US/products/ps10537/products\\_relevant\\_interfaces\\_and\\_modules.html](http://www.cisco.com/en/US/products/ps10537/products_relevant_interfaces_and_modules.html)
- Cisco 1900 Series Relevant Modules and Interfaces:  
[http://www.cisco.com/en/US/products/ps10538/products\\_relevant\\_interfaces\\_and\\_modules.html](http://www.cisco.com/en/US/products/ps10538/products_relevant_interfaces_and_modules.html)

You need a network module adapter to integrate existing network modules (NMs), enhanced network modules (NMEs), or extended voice modules (EVMs) into the service-module (SM) slot on the Cisco ISR G2 routers. Similarly, you need a packet voice digital signal processor module (PVDM) adapter to insert existing PVDM2s into the PVDM3 slot of the Cisco 3900 or 2900 Series routers. You need one adapter for each module that needs to be plugged in; you can order it during system configuration in the Cisco Dynamic Configuration tool. You can also order these adapters as spares in order to insert any existing modules from original ISRs in use. Part numbers for the module adapters are listed in Table 24.

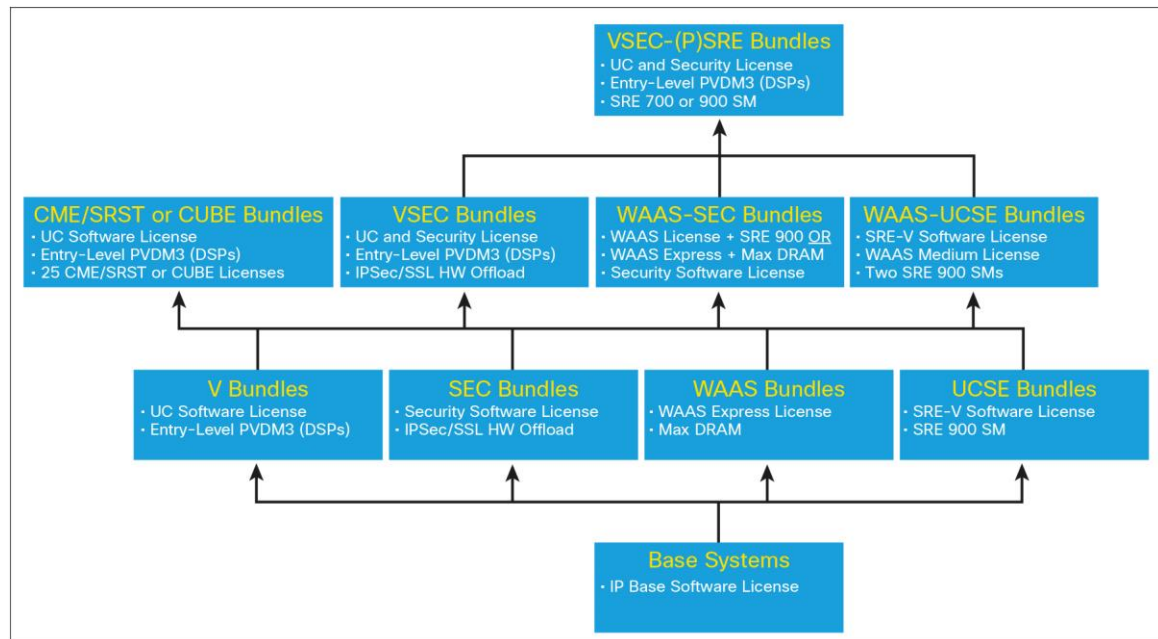
**Table 24.** Module Adapters for Cisco 2900 and 3900 Series Routers (Factory Option and Spares)

Ordering SKU	Description
SM-NM-ADPTR	Network Module Adapter for SM Slot on Cisco 2900, 3900 ISR (Both system & spare)
PVDM2-ADPTR	PVDM2 Adapter for PVDM Slot on Cisco 2900, 3900 Series ISR (Both system & spare)

## 4. Bundled Systems for Integrated Services Routers Generation 2

You can also order the Cisco ISR G2 portfolio products as prepackaged bundled systems for deploying advanced technologies such as security, unified communications, and application services in the branch office. Many of the bundled systems are being preserved from the first-generation ISRs and are being updated for the ISR G2 routers, as illustrated in Figure 2.

**Figure 2.** Bundled System Offerings for Cisco 3900, 2900, and 1900 Series Integrated Services Routers



### 4.1 Security Bundles

Cisco router security bundles deliver security features such as Cisco IOS Software-based intrusion prevention systems (IPSs), firewall, VPN, content filtering, and infrastructure security services over numerous WAN access technologies, offering high levels of performance, scalability, and availability to meet today's growing business requirements. Table 25 lists the Cisco ISR G2 security bundles for the Cisco 3900, 2900, and 1900 Series routers that come with the Security technology license activated and the advanced security features available for use. By default, these bundles ship with the universal Cisco IOS Software image that supports payload cryptography.



**Table 25.** Security Bundles for Cisco 3900, 2900, and 1900 Series Routers - Include universalk9 Image and SEC License

Ordering SKU	Description	Technical Service SKU*(SMARTnet 8x5xNBD or Cisco Services for IPS 8x5xNBD)
<b>CISCO3945E-SEC/K9</b>	Cisco 3945E Security Bundle w/SEC license PAK	CON-SNT-3945ESEC or CON-SU1-3945ESEC
<b>CISCO3925E-SEC/K9</b>	Cisco 3925E Security Bundle w/SEC license PAK	CON-SNT-3925ESEC or CON-SU1-3925ESEC
<b>CISCO3945-SEC/K9</b>	Cisco 3945 Security Bundle w/SEC license PAK	CON-SNT-3945SEC or CON-SU1-3945SEC
<b>CISCO3925-SEC/K9</b>	Cisco 3925 Security Bundle w/SEC license PAK	CON-SNT-3925SEC or CON-SU1-3925SEC
<b>CISCO2951-SEC/K9</b>	Cisco 2951 Security Bundle w/SEC license PAK	CON-SNT-2951SEC or CON-SU1-2951SEC
<b>CISCO2921-SEC/K9</b>	Cisco 2921 Security Bundle w/SEC license PAK	CON-SNT-2921SEC or CON-SU1-2921SEC
<b>CISCO2911-SEC/K9</b>	Cisco 2911 Security Bundle w/SEC license PAK	CON-SNT-2911SEC or CON-SU1-2911SEC
<b>CISCO2901-SEC/K9</b>	Cisco 2901 Security Bundle w/SEC license PAK	CON-SNT-2901SEC or CON-SU1-2901SEC
<b>CISCO1941-SEC/K9</b>	Cisco 1941 Security Bundle w/SEC license PAK	CON-SNT-1941SEC or CON-SU1-1941SEC
<b>C1941W-A-N-SEC/K9</b>	Cisco 1941 w/2 GE, 2 EHWIC slots, 256MB CF, 512MB DRAM, FCC Compliant, SEC Lic	CON-SNT-1941WASC
<b>C1941W-E-N-SEC/K9</b>	Cisco 1941 w/2 GE, 2 EHWIC slots, 256MB CF, 512MB DRAM, ETSI Compliant, SEC Lic	CON-SNT-1941WESC
<b>CISCO1921-T1SEC/K9</b>	Cisco 1921 T1 Security Bundle w/SEC license PAK	CON-SNT-1921T1SC
<b>CISCO1921-SEC/K9</b>	Cisco 1921 Security Bundle w/SEC license PAK	CON-SNT-1921SEC

\* Customers can purchase either the Cisco SMARTnet™ Service (CON-SNT-XXX) or the Cisco Services for IPS (CON-SU1-XXX), which includes SMARTnet® Service and Signature Updates for Intrusion Prevention System (IPS).

Table 26 lists part numbers for Cisco Firepower™ licenses for Cisco 3900 and 2900 Series routers.

**Table 26.** Cisco Firepower Subscription Licenses for Cisco 3900 and 2900 Series Routers

Ordering SKU	Description
<b>L-FP2900-TA-1Y</b>	Cisco NGIPSv IPS and Apps on ISR 29xx 1Y Svc Sub
<b>L-FP2900-TA-3Y</b>	Cisco NGIPSv IPS and Apps on ISR 29xx 3Y Svc Sub
<b>L-FP2900-TAC-1Y</b>	Cisco NGIPSv IPS, Apps and URL on ISR 29xx 1Y Svc Sub
<b>L-FP2900-TAC-3Y</b>	Cisco NGIPSv IPS, Apps and URL on ISR 29xx 3Y Svc Sub
<b>L-FP2900-TAM-1Y</b>	Cisco NGIPSv IPS, Apps and AMP on ISR 29xx 1Y Svc Sub
<b>L-FP2900-TAM-3Y</b>	Cisco NGIPSv IPS, Apps and AMP on ISR 29xx 3Y Svc Sub
<b>L-FP2900-TAMC-1Y</b>	Cisco NGIPSv IPS, Apps, AMP and URL on ISR 29xx 1Y Svc Sub
<b>L-FP2900-TAMC-3Y</b>	Cisco NGIPSv IPS, Apps, AMP and URL on ISR 29xx 3Y Svc Sub
<b>L-FP3900-TA-1Y</b>	Cisco NGIPSv IPS and Apps on ISR 39xx 1Y Svc Sub
<b>L-FP3900-TA-3Y</b>	Cisco NGIPSv IPS and Apps on ISR 39xx 3Y Svc Sub
<b>L-FP3900-TAC-1Y</b>	Cisco NGIPSv IPS, Apps and URL on ISR 39xx 1Y Svc Sub
<b>L-FP3900-TAC-3Y</b>	Cisco NGIPSv IPS, Apps and URL on ISR 39xx 3Y Svc Sub
<b>L-FP3900-TAM-1Y</b>	Cisco NGIPSv IPS, Apps and AMP on ISR 39xx 1Y Svc Sub
<b>L-FP3900-TAM-3Y</b>	Cisco NGIPSv IPS, Apps and AMP on ISR 39xx 3Y Svc Sub
<b>L-FP3900-TAMC-1Y</b>	Cisco NGIPSv IPS, Apps, AMP and URL on ISR 39xx 1Y Svc Sub
<b>L-FP3900-TAMC-3Y</b>	Cisco NGIPSv IPS, Apps, AMP and URL on ISR 39xx 3Y Svc Sub
<b>L-FP3945E-TA-1Y</b>	Cisco NGIPSv IPS and Apps on ISR 3945E 1Y Svc Sub
<b>L-FP3945E-TA-3Y</b>	Cisco NGIPSv IPS and Apps on ISR 3945E 3Y Svc Sub
<b>L-FP3945E-TAC-1Y</b>	Cisco NGIPSv IPS, Apps and URL on ISR 3945E 1Y Svc Sub
<b>L-FP3945E-TAC-3Y</b>	Cisco NGIPSv IPS, Apps and URL on ISR 3945E 3Y Svc Sub



Ordering SKU	Description
L-FP3945E-TAM-1Y	Cisco NGIPSv IPS, Apps and AMP on ISR 3945E 1Y Svc Sub
L-FP3945E-TAM-3Y	Cisco NGIPSv IPS, Apps and AMP on ISR 3945E 3Y Svc Sub
L-FP3945E-TAMC-1Y	Cisco NGIPSv IPS, Apps, AMP and URL on ISR 3945E 1Y Svc Sub
L-FP3945E-TAMC-3Y	Cisco NGIPSv IPS, Apps, AMP and URL on ISR 3945E 3Y Svc Sub

## 4.2 Unified Communications Bundles

Cisco ISR G2 Voice and Voice Security bundles enable unified communications through a rich signaling and media-processing infrastructure, including a variety of protocols, media interworking, signal and media security, transcoding, conferencing, and quality of service (QoS). You can order these bundles with optional licenses for Cisco Unified Communications Manager Express (Unified CME) or Survivable Remote Site Telephony (SRST).

All the Unified Communications bundles on Cisco 3900 and 2900 Series routers include the new PVDM3, which has been optimized for concurrent voice and video support. The PVDM3 modules support all voice-gateway functions of earlier generations of PVDMs, and they add higher density and more processing power to support emerging rich-media applications.

Table 27 lists the Cisco ISR G2 voice bundles for the Cisco 3900 and 2900 Series routers that come with entry-level PVDM3, UC technology license, and the unified communications features available for use. By default, these bundles ship with the universal Cisco IOS Software image that supports payload cryptography.

**Table 27.** Voice and Video Bundles for Cisco 3900 and 2900 Series Routers - Include universalk9 Image, UC License, and PVDM3

Ordering SKU	Description	Technical Service SKU (SMARTnet 8x5xNBD)
CISCO3945E-V/K9	Cisco 3945E Voice Bundle, PVDM3-64, UC License PAK	CON-SNT-3945EV
CISCO3925E-V/K9	Cisco 3925E Voice Bundle, PVDM3-64, UC License PAK	CON-SNT-3925EV
CISCO3945-V/K9	Cisco 3945 Voice Bundle, PVDM3-64, UC License PAK	CON-SNT-3945V
CISCO3925-V/K9	Cisco 3925 Voice Bundle, PVDM3-64, UC License PAK	CON-SNT-3925V
CISCO2951-V/K9	Cisco 2951 Voice Bundle, PVDM3-32, UC License PAK	CON-SNT-2951V
CISCO2921-V/K9	Cisco 2921 Voice Bundle, PVDM3-32, UC License PAK	CON-SNT-2921V
CISCO2911-V/K9	Cisco 2911 Voice Bundle, PVDM3-16, UC License PAK	CON-SNT-2911V
CISCO2901-V/K9	Cisco 2901 Voice Bundle, PVDM3-16, UC License PAK	CON-SNT-2901V

Table 28 lists the Cisco ISR G2 CME-SRST bundles for the Cisco 3900 and 2900 Series routers that come with the entry-level PVDM3, UC technology license, and right-to-use licenses for 25 seats of Cisco Unified CME or SRST.

**Table 28.** CME-SRST Bundles for Cisco 3900 and 2900 Series Routers - Include universalk9 Image, UC and CME/SRST Licenses, and PVDM3

Ordering SKU	Description	Technical Service SKU (SMARTnet 8x5xNBD)
C3945E-CME-SRST/K9	3945E Voice Bundle w/PVDM3-64, FL-CME-SRST-25, UC License PAK	CON-SNT-3945ECST
C3925E-CME-SRST/K9	3925E Voice Bundle w/PVDM3-64, FL-CME-SRST-25, UC License PAK	CON-SNT-3925ECST
C3945-CME-SRST/K9	3945 Voice Bundle w/PVDM3-64, FL-CME-SRST-25, UC License PAK	CON-SNT-3945CMST
C3925-CME-SRST/K9	3925 Voice Bundle w/PVDM3-64, FL-CME-SRST-25, UC License PAK	CON-SNT-3925CMST

Ordering SKU	Description	Technical Service SKU (SMARTnet 8x5xNBD)
<b>C2951-CME-SRST/K9</b>	2951 Voice Bundle w/PVDM3-32, FL-CME-SRST-25, UC License PAK	CON-SNT-2951CMST
<b>C2921-CME-SRST/K9</b>	2921 Voice Bundle w/PVDM3-32, FL-CME-SRST-25, UC License PAK	CON-SNT-2921CMST
<b>C2911-CME-SRST/K9</b>	2921 Voice Bundle w/PVDM3-16, FL-CME-SRST-25, UC License PAK	CON-SNT-2911CMST
<b>C2901-CME-SRST/K9</b>	2901 Voice Bundle w/PVDM3-16, FL-CME-SRST-25, UC License PAK	CON-SNT-2901CMST

Table 29 lists the Cisco ISR G2 voice and video security bundles for the Cisco 3900 and 2900 Series routers that come with the entry-level PVDM3, Unified Communications, and Security technology license activated. By default, these bundles ship with the universal Cisco IOS Software image that supports payload cryptography.

**Table 29.** VSEC Bundles for Cisco 3900 and 2900 Series Routers - Include universalk9 Image, UC and SEC License, and PVDM3

Ordering SKU	Description	Technical Service SKU (SMARTnet 8x5xNBD or Cisco Services for IPS 8x5xNBD)
<b>C3945E-VSEC/K9</b>	Cisco 3945E Voice Sec. Bundle, PVDM3-64, UC and SEC License PAK	CON-SNT-3945EVSC or CON-SU1-3945EVSC
<b>C3925E-VSEC/K9</b>	Cisco 3925 EVoice Sec. Bundle, PVDM3-64, UC and SEC License PAK	CON-SNT-3925EVSC or CON-SU1-3925EVSC
<b>C3945-VSEC/K9</b>	Cisco 3945 Voice Sec. Bundle, PVDM3-64, UC and SEC License PAK	CON-SNT-3945VSEC or CON-SU1-3945VSEC
<b>C3925-VSEC/K9</b>	Cisco 3925 Voice Sec. Bundle, PVDM3-64, UC and SEC License PAK	CON-SNT-3925VSEC or CON-SU1-3925VSEC
<b>C2951-VSEC/K9</b>	Cisco 2951 Voice Sec. Bundle, PVDM3-32, UC and SEC License PAK	CON-SNT-2951VSEC or CON-SU1-2951VSEC
<b>C2921-VSEC/K9</b>	Cisco 2921 Voice Sec. Bundle, PVDM3-32, UC and SEC License PAK	CON-SNT-2921VSEC or CON-SU1-2921VSEC
<b>C2911-VSEC/K9</b>	Cisco 2911 Voice Sec. Bundle, PVDM3-16, UC and SEC License PAK	CON-SNT-2911VSEC or CON-SU1-2911VSEC
<b>C2901-VSEC/K9</b>	Cisco 2901 Voice Sec. Bundle, PVDM3-16, UC and SEC License PAK	CON-SNT-2901VSEC or CON-SU1-2901VSEC

Table 30 lists the ISR G2 CUBE bundles for the Cisco 3900 and 2900 Series routers that come with the entry-level PVDM3, Unified Communications and Security technology license activated, and right-to-use licenses for 25 sessions of CUBE. By default, these bundles will ship with the universal Cisco IOS Software image that supports payload cryptography.

**Table 30.** CUBE Bundles for Cisco 3900, 2900 Series Routers - Include universalk9 Image, UC, and SEC License and PVDM3

Ordering SKU	Description	Technical Service SKU (SMARTnet 8x5xNBD)
<b>C3945E-VSEC-CUBEK9</b>	Cisco 3945E VSEC CUBE Bundle, PVDM3-64, FL-CUBEE-25, UC and SEC License PAK	CON-OS-C3945EVE
<b>C3925E-VSEC-CUBE/K9</b>	Cisco 3925E VSEC CUBE Bundle, PVDM3-64, FL-CUBEE-25, UC and SEC Lic PAK	CON-OS-C3925EVSE
<b>C3945-VSEC-CUBE/K9</b>	Cisco 3945 VSEC CUBE Bundle, PVDM3-64, FL-CUBEE-25, UC and SEC License PAK	CON-OS-C3945VS
<b>C3925-VSEC-CUBE/K9</b>	Cisco 3925 VSEC CUBE Bundle, PVDM3-64, FL-CUBEE-25, UC and SEC Lic PAK	CON-OS-C3925VS

Ordering SKU	Description	Technical Service SKU (SMARTnet 8x5xNBD)
<b>C2951-VSEC-CUBE/K9</b>	Cisco 2951 VSEC CUBE Bundle, PVDM3-32, FL-CUBEE-25, UC and SEC License PAK	CON-OS-2951VSCC
<b>C2921-VSEC-CUBE/K9</b>	Cisco 2921 VSEC CUBE Bundle, PVDM3-32, FL-CUBEE-25, UC and SEC Lic PAK	CON-OS-2921VSCC
<b>C2911-VSEC-CUBE/K9</b>	Cisco 2911 VSEC CUBE Bundle, PVDM3-16, FL-CUBEE-25, UC and SEC License PAK	CON-OS-2911VSCC
<b>C2901-VSEC-CUBE/K9</b>	Cisco 2901 VSEC CUBE Bundle, PVDM3-16, FL-CUBEE-25, UC and SEC License PAK	CON-OS-2901VSCC

### 4.3 Application Services (SRE) Bundles

The Cisco Services-Ready Engine (SRE) modules are high-performance router blades for Cisco ISR G2 routers; they provide the capability to host Cisco, third-party, and custom applications. The modules have their own processors, storage, network interfaces, and memory that operate independently of the host router resources, helping ensure maximum concurrent routing and application performance.

The Cisco Services-Ready Engine modules support an on-demand deployment model that enables you to provision integrated services and branch-office applications on the modules at any time. This solution can help your organization reduce the cost of integrated services deployment, help ensure your network will be prepared for new services and versions, and help your organization quickly deploy new branch-office applications when and where they are needed.

Table 31 lists the Cisco ISR G2 SRE bundles for the Cisco 3900, 2900, and 1900 Series routers. The Cisco 1941 SRE bundle includes the ISM-SRE-300-K9 module along with the Security technology license. The Cisco 2900 and 3900 SRE bundles are based on voice security (VSEC) configurations and hence include the UC and Security technology license and the entry-level PVDM3 in each router. The Cisco 2901 and 2911 VSEC-SRE bundles include the ISM-SRE-300-K9 module, whereas the Cisco 2921, 2951, 3925, and 3945 SRE bundles include the SM-SRE-700-K9 module for deployment of application services in the branch office. The Cisco 3945E and 3925E SRE bundles include by default the SM-SRE-900-K9. The ISR G2 PSRE bundles for the Cisco 3900 Series routers include by default the SM-SRE-900-K9. By default, all SRE and PSRE bundles ship with the universal Cisco IOS Software image that supports payload cryptography.

**Table 31.** SRE Bundles for Cisco 3900, 2900, and 1900 Series Routers - Include SRE Module

Ordering SKU	Description	Technical Service SKUs (SMARTnet 8x5xNBD, Software Application Support with Upgrades (SASU))
<b>C3945E-VSEC-SRE/K9</b>	Cisco 3945E SRE Bundle, SRE 900, PVDM3-64, UC and SEC License PAK	CON-SNT-3945EVSEC, CON-SAU-SMSRE900
<b>C3925E-VSEC-SRE/K9</b>	Cisco 3925E SRE Bundle, SRE 900, PVDM3-64, UC and SEC License PAK	CON-SNT-3925EVSEC, CON-SAU-SMSRE900
<b>C3945-VSEC-PSRE/K9</b>	Cisco 3945 PSRE Bundle, SRE 900, PVDM3-64, UC and SEC License PAK	CON-SNT-3945VSEC, CON-SAU-SMSRE900
<b>C3925-VSEC-PSRE/K9</b>	Cisco 3925 PSRE Bundle, SRE 900, PVDM3-64, UC and SEC License PAK	CON-SNT-3925VSEC, CON-SAU-SMSRE900
<b>C3945-VSEC-SRE/K9</b>	Cisco 3945 SRE Bundle, SRE 700, PVDM3-64, UC and SEC License PAK	CON-SNT-3945VSEC, CON-SAU-SMSRE700
<b>C3945-VSEC-PSRE/K9</b>	Cisco 3945 SRE Bundle, SRE 900, PVDM3-64, UC and SEC License PAK	CON-SNT-3945VSEC, CON-SAU-SMSRE900
<b>C3925-VSEC-SRE/K9</b>	Cisco 3925 SRE Bundle, SRE 700, PVDM3-64, UC and SEC License PAK	CON-SNT-3925VSEC, CON-SAU-SMSRE700
<b>C3925-VSEC-PSRE/K9</b>	Cisco 3925 SRE Bundle, SRE 900, PVDM3-64, UC and SEC License PAK	CON-SNT-3925VSEC, CON-SAU-SMSRE900

Ordering SKU	Description	Technical Service SKUs* (SMARTnet 8x5xNBD, Software Application Support with Upgrades (SASU))
<b>C2951-VSEC-SRE/K9</b>	Cisco 2951 SRE Bundle, SRE 700, PVDM3-32, UC and SEC License PAK	CON-SNT-2951VSEC, CON-SAU-SMSRE700
<b>C2921-VSEC-SRE/K9</b>	Cisco 2921 SRE Bundle, SRE 700, PVDM3-32, UC and SEC License PAK	CON-SNT-2921VSEC, CON-SAU-SMSRE700
<b>C2911-VSEC-SRE/K9</b>	Cisco 2911 SRE Bundle, SRE 300, PVDM3-16, UC and SEC License PAK	CON-SNT-2911VSEC, CON-SAU-SRE300
<b>C2901-VSEC-SRE/K9</b>	Cisco 2901 SRE Bundle, SRE 300, PVDM3-16, UC and SEC License PAK	CON-SNT-2901VSEC, CON-SAU-ISRE300
<b>C1941-SEC-SRE/K9</b>	Cisco 1941 SRE Bundle, SRE 300, SEC license PAK	CON-SNT-1941SEC, CON-SAU-ISRE300

\* Customers can purchase Cisco SMARTnet Service (CON-SNT-XXX) for technical support on SRE bundles; the service covers the router and the modules including the "blank" SRE module. SASU Service is necessary for the application running on the SRE module if one is being purchased along with the bundle.

#### 4.4 Cisco Unified Computing System Express Bundles

The Cisco Unified Computing System™ Express (Cisco UCS® Express) is a converged computing, virtualization, and networking platform for hosting essential infrastructure services and mission-critical business applications in the lean branch office.

It comprises the following:

- Cisco SRE x86 Blade Server computing platform
- Cisco SRE Virtualization (SRE-V) server virtualization platform powered by VMware vSphere Hypervisor (ESXi)
- Cisco ISR G2 networking platform with Multigigabit Fabric (MGF) backplane switch
- Cisco Integrated Management Controller Express (IMC Express) blade-management system

Cisco UCS Express is best suited for multisite organizations with centralized IT infrastructure that need to host applications locally in the branch office because of performance, survivability, or compliance reasons. It enables multiple virtual instances of Microsoft Windows Server to run on dedicated general-purpose x86 blades directly in the Cisco ISR G2 chassis. With Cisco UCS Express, multisite organizations can increase business agility, lower total cost of ownership (TCO), and get more value out of their branch-office infrastructure.

Table 32 lists the Cisco ISR G2 UCSE bundles for the Cisco 3900 and 2900 Series routers. The Cisco 2900 and 3900 UCSE bundles include SM-SRE-900-K9, SRE-V license (VMware vSphere Hypervisor), maximum DRAM for the router, and an additional 256 MB of Compact Flash (768 MB total) required to run Cisco IMC Express on the router. The ISR G2 ES24 UCSE bundles include the Cisco EtherSwitch® Service Module in addition to SM-SRE-900-K9, SRE-V license (VMware vSphere Hypervisor), maximum DRAM for the router, and an additional 256 MB of Compact Flash (768 MB total). The specific capabilities of the Cisco EtherSwitch module vary depending on the router selected. The intent of the ES24 UCSE bundles is to provide a basic "branch-office-in-a-box" function featuring router, switch, and server consolidated into a single device. By default, all UCSE and ES24 UCSE bundles ship with the universal Cisco IOS Software image that supports IP services.

**Table 32.** UCSE Bundles for Cisco 3900 and 2900 Series Routers

Ordering SKU	Description	Technical Service SKUs* (SMARTnet 8x5xNBD)
<b>C3945-UCSE/K9</b>	Cisco 3945 UCSE Bundle, SRE 900, SRE-V License, 4 GB ISR DRAM, 768 MB Compact Flash	CON-SNT-3945UCSE
<b>C3925-UCSE/K9</b>	Cisco 3925 UCSE Bundle, SRE 900, SRE-V License, 4 GB ISR DRAM, 768 MB Compact Flash	CON-SNT-3925UCSE

Ordering SKU	Description	Technical Service SKUs* (SMARTnet 8x5xNBD)
<b>C2951-UCSE/K9</b>	Cisco 2951 UCSE Bundle, SRE 900, SRE-V License, 4 GB ISR DRAM, 768 MB Compact Flash	CON-SNT-2951UCSE
<b>C2921-UCSE/K9</b>	Cisco 2921 UCSE Bundle, SRE 900, SRE-V License, 2.5 GB ISR DRAM, 768 MB Compact Flash	CON-SNT-2921UCSE
<b>C2911-UCSE/K9</b>	Cisco 2911 UCSE Bundle, SRE 900, SRE-V License, 2.5 GB ISR DRAM, 768 MB Compact Flash	CON-SNT-2911UCSE
<b>C3945-ES24-UCSE/K9</b>	Cisco 3945 ES24 UCSE Bundle, SRE 900, SRE-V License, 24 port Layer 2 EtherSwitch SM, 4 GB ISR DRAM, 768 MB Compact Flash	CON-SNT-3945UCSE
<b>C3925-ES24-UCSE/K9</b>	Cisco 3925 ES24 UCSE Bundle, SRE 900, SRE-V License, 24 port Layer 2 PoE EtherSwitch SM, PoE Power Supply, 4 GB ISR DRAM, 768 MB Compact Flash	CON-SNT-3925UCSE
<b>C2951-ES24-UCSE/K9</b>	Cisco 2951 ES24 UCSE Bundle, SRE 900, SRE-V License, 24 port Layer 3 PoE EtherSwitch SM, PoE Power Supply, 4 GB ISR DRAM, 768 MB Compact Flash	CON-SNT-2951UCSE

\* Customers can purchase Cisco SMARTnet Service (CON-SNT-XXX) for technical support on UCSE bundles; the service covers the router and the modules including the SRE module and the SRE-V software.

#### 4.5 Cisco Wide Area Application Services Bundles

Cisco Wide Area Application Services (WAAS) solutions for Cisco ISR platforms enable the distributed organization to implement application acceleration and WAN optimization with fast return on investment. There are two Cisco WAAS solutions for the Cisco 3900, 2900, and 1900 Series routers. One solution is hosted on the SRE modules (WAAS on SRE) and the other is integrated directly into Cisco IOS Software (WAAS Express).

Cisco WAAS on SRE provides full-feature WAN optimization and on-demand provisioning without a physical visit to the branch office, and it is hosted on a compact, energy-efficient module. Cisco WAAS Express is a cost-effective Cisco IOS Software-based WAN optimization solution that increases the amount of available bandwidth for small to midsize branch offices and remote locations, while accelerating TCP-based applications operating in a WAN environment.

Table 33 lists the ISR G2 WAAS bundles for the Cisco 3900, 2900, and 1900 Series routers. The Cisco 2900 and 3900 WAAS UCSE bundles include two SM-SRE-900-K9 modules, SRE-V license (VMware vSphere Hypervisor), WAAS Enterprise Medium license, maximum DRAM for the router, and an additional 256 MB of Compact Flash (768 MB total). By default, all WAAS UCSE bundles ship with the universal Cisco IOS Software image that supports IP services. The Cisco 2900 and 3900 WAAS SEC bundles include either SM-SRE-700-K9 or SM-SRE-900-K9, depending on the router selected; WAAS Enterprise Small, Medium, or Large software license, depending on the router selected; and the Cisco IOS Security software license. By default, all WAAS SEC bundles ship with the universal Cisco IOS Software image that supports payload cryptography. The WAAS Express SEC bundles include the maximum amount of router DRAM, WAAS Express software license, and a Cisco IOS Security software license. By default, all WAAS Express SEC bundles ship with the universal Cisco IOS Software image that supports payload cryptography. The WAAS Express bundles include the maximum amount of router DRAM and the WAAS Express software license. By default, all WAAS Express bundles ship with the universal Cisco IOS Software image that supports IP services.

**Table 33.** WAAS Bundles for Cisco 3900 and 2900 Series Routers

Ordering SKU	Description	Technical Service SKUs* (SMARTnet 8x5xNBD, Software Application Support with Upgrades (SASU))
<b>C3945-WAAS-UCSE/K9</b>	Cisco 3945 UCSE Bundle, two SRE 900, SRE-V License, WAAS Enterprise Medium License, 4 GB ISR DRAM, 768 MB Compact Flash	CON-SNT-3945WAAS, CON-SAU-SMSRE900
<b>C3925-WAAS-UCSE/K9</b>	Cisco 3925 UCSE Bundle, two SRE 900, SRE-V License, WAAS Enterprise Medium License, 4 GB ISR DRAM, 768 MB Compact Flash	CON-SNT-3925WAAS, CON-SAU-SMSRE900

Ordering SKU	Description	Technical Service SKUs* (SMARTnet 8x5xNBD, Software Application Support with Upgrades (SASU))
<b>C2951-WAAS-UCSE/K9</b>	Cisco 2951 UCSE Bundle, two SRE 900, SRE-V License, WAAS Enterprise Medium License, 4 GB ISR DRAM, 768 MB Compact Flash	CON-SNT-2951WAAS, CON-SAU-SMSRE900
<b>C3945-WAAS-SEC/K9</b>	Cisco 3945 WAAS SEC Bundle, SRE 900, WAAS Enterprise Large License, SEC License PAK	CON-SNT-3945WAAS, CON-SAU-SMSRE900
<b>C3925-WAAS-SEC/K9</b>	Cisco 3925 WAAS SEC Bundle, SRE 900, WAAS Enterprise Large License, SEC License PAK	CON-SNT-3925WAAS, CON-SAU-SMSRE900
<b>C2951- WAAS-SEC//K9</b>	Cisco 2951 WAAS SEC Bundle, SRE 900, WAAS Enterprise Large License, SEC License PAK	CON-SNT-2951WAAS, CON-SAU-SMSRE900
<b>C2921- WAAS-SEC//K9</b>	Cisco 2921 WAAS SEC Bundle, SRE 700, WAAS Enterprise Medium License, SEC License PAK	CON-SNT-2921WAAS, CON-SAU-SMSRE700
<b>C2911- WAAS-SEC//K9</b>	Cisco 3945 WAAS SEC Bundle, SRE 700, WAAS Enterprise Small License, SEC License PAK	CON-SNT-2911WAAS, CON-SAU-SMSRE700
<b>C3945-WAASX-SEC/K9</b>	Cisco 3945, WAAS Express Feature License, IOS Security PAK, 4GB DRAM	CON-SNT-3945WSXS
<b>C3925-WAASX-SEC/K9</b>	Cisco 3925, WAAS Express Feature License, IOS Security PAK, 4GB DRAM	CON-SNT-3925WSXS
<b>C2951-WAASX-SEC/K9</b>	Cisco 2951, WAAS Express Feature License, IOS Security PAK, 4GB DRAM	CON-SNT-2951WSXS
<b>C2921-WAASX-SEC/K9</b>	Cisco 2921, WAAS Express Feature License, IOS Security PAK, 2.5GB DRAM	CON-SNT-2921WXSC
<b>C2911-WAASX-SEC/K9</b>	Cisco 2911, WAAS Express Feature License, IOS Security PAK, 2.5GB DRAM	CON-SNT-2911WXSC
<b>C2901-WAASX-SEC/K9</b>	Cisco 2901, WAAS Express Feature License, IOS Security PAK, 2.5GB DRAM	CON-SNT-2901WXSC
<b>C1941-WAASX-SEC/K9</b>	Cisco 1941, WAAS Express Feature License, IOS Security PAK, 2.5GB DRAM	CON-SNT-1941WXSC
<b>C3945-WAASX/K9</b>	Cisco 3945, WAAS Express Feature License, 4GB DRAM	CON-SNT-3945WASX
<b>C3925-WAASX/K9</b>	Cisco 3925, WAAS Express Feature License, 4GB DRAM	CON-SNT-3925WASX
<b>C2951-WAASX/K9</b>	Cisco 2951, WAAS Express Feature License, 4GB DRAM	CON-SNT-2951WASX
<b>C2921-WAASX/K9</b>	Cisco 2921, WAAS Express Feature License, 2.5GB DRAM	CON-SNT-2921WXX9
<b>C2911-WAASX/K9</b>	Cisco 2911, WAAS Express Feature License, 2.5GB DRAM	CON-SNT-2911WXX9
<b>C2901-WAASX/K9</b>	Cisco 2901, WAAS Express Feature License, 2.5GB DRAM	CON-SNT-2901WXX9
<b>C1941-WAASX/K9</b>	Cisco 1941, WAAS Express Feature License, 2.5GB DRAM	CON-SNT-1941WXX9

\* Customers can purchase Cisco SMARTnet Service (CON-SNT-XXX) for technical support on SRE bundles; the service covers the router and the modules including the SRE module, and SRE-V software. SASU Service is necessary for WAAS running on the SRE.

For more information about how to order the Cisco 4451-X and its associated accessories and bundle offerings, please visit the [ISR 4451-X Ordering Guide](#).

## 5. Cisco and Partner Services for the Branch Office

Transform the branch-office experience and accelerate business innovation and growth in the Borderless Network using intelligent, personalized services from Cisco and our partners. We have the depth and breadth of expertise to create a clear, replicable, optimized branch-office footprint across technologies. Planning and design services align technology with business goals and can increase the accuracy, speed, and efficiency of deployment. Technical services help improve operational efficiency, save money, and mitigate risk. Optimization services are designed to continuously improve performance and help your team succeed with new technologies.



## 5.1 Technical Services Available for Cisco ISR G2 Products

- **Cisco SMARTnet Service:** Provides comprehensive technical support services for the Cisco ISR G2 platforms (both base systems and bundled systems), OS software and feature licenses, and modules, including the SRE module. Cisco SMARTnet Services includes advance hardware replacement, OS updates, online tools and resources, and Cisco Technical Assistance Center (TAC) support.
- **Cisco Application Support plus Upgrades (SASU)** provides technical support services including updates and upgrades for any Cisco software application running on the SRE module. Applications might include Cisco Unity® Express, the Cisco Application Extension Platform (AXP), Cisco Wireless LAN Controller (WLC), Cisco WAAS, and Cisco Video Surveillance.
- **Cisco Services for Intrusion Prevention System (IPS)** provides Cisco SMARTnet Service deliverables including hardware support, OS updates, and online tools and resources, and it provides signature updates and additional services for Cisco ISR G2 routers with a security feature set with IPS or an IPS network module.

Table 34 lists some technical services use cases.

**Table 34.** Technical Services Use Cases

If you buy an ISR G2 base or bundled system with:	You need:
Any Cisco IOS Software including technology or feature licenses for Cisco IOS Software	Cisco SMARTnet Service
Any modules including “blank” SRE modules	Cisco SMARTnet Service
An application running on an SRE module	Cisco SMARTnet Service + SASU
A security feature set and do not require IPS signature updates	Cisco SMARTnet Service
A security feature set with IPS or a chassis with an IPS network module	Cisco Services for IPS
A security feature set with IPS or a chassis with an IPS network module feature set with an application running on an SRE module	Cisco Services for IPS + SASU

## 6. Additional Information and Marketing Contacts

To obtain current information about prices for products in the Cisco ISR G2 portfolio, please refer to the Cisco price list at: <http://www.cisco.com/en/US/ordering/index.shtml>.

For more information about the Cisco Integrated Services Routers Generation 2, visit:

<http://www.cisco.com/go/isrG2>.

For more information about Cisco Technical Services, visit <http://www.cisco.com/go/ts>.



Americas Headquarters  
Cisco Systems, Inc.  
San Jose, CA

Asia Pacific Headquarters  
Cisco Systems (USA) Pte. Ltd.  
Singapore

Europe Headquarters  
Cisco Systems International BV Amsterdam,  
The Netherlands

Cisco has more than 200 offices worldwide. Addresses, phone numbers, and fax numbers are listed on the Cisco Website at [www.cisco.com/go/offices](http://www.cisco.com/go/offices).

Cisco and the Cisco logo are trademarks or registered trademarks of Cisco and/or its affiliates in the U.S. and other countries. To view a list of Cisco trademarks, go to this URL: [www.cisco.com/go/trademarks](http://www.cisco.com/go/trademarks). Third party trademarks mentioned are the property of their respective owners. The use of the word partner does not imply a partnership relationship between Cisco and any other company. (1110R)