

PATCHBOX Plus+ PATCHBOX 365 SETUP.EXE /dev/mount

PATCHBOX Plus+ PATCHBOX 365 SETUP.EXE /dev/mount

PATCHBOX Simplify IT

PATCHBOX

Simplify IT

Simplify Cable Management.

- PATCHBOX Plus+
- PATCHBOX 365

Simplify Hardware Installation.

- Setup.exe

Simplify Device Mounting.

- /dev/mount

Founded with a strong dedication to the optimization of IT workflows in mind PATCHBOX develops solutions that provide a competitive advantage, increased well-being, safer working environment as well as supporting equal opportunity in the Information Technology sector.

patchbox.com

patchbox.com

All rights reserved. Specifications subject to change. E&OE
PATCHBOX GmbH, Hernalsner Gürtel 1/12, 1170 Vienna, Austria. +43 1 99 71 960
mail@patchbox.com, www.patchbox.com. PBX20Q3 © PATCHBOX 2020

PATCHBOX Plus+ PATCHBOX 365

PATCHBOX Simplify IT



Perfect Length Patch Cords Everytime!



All-in-one: Cable Routing & Patching Solution



Organized & Structured



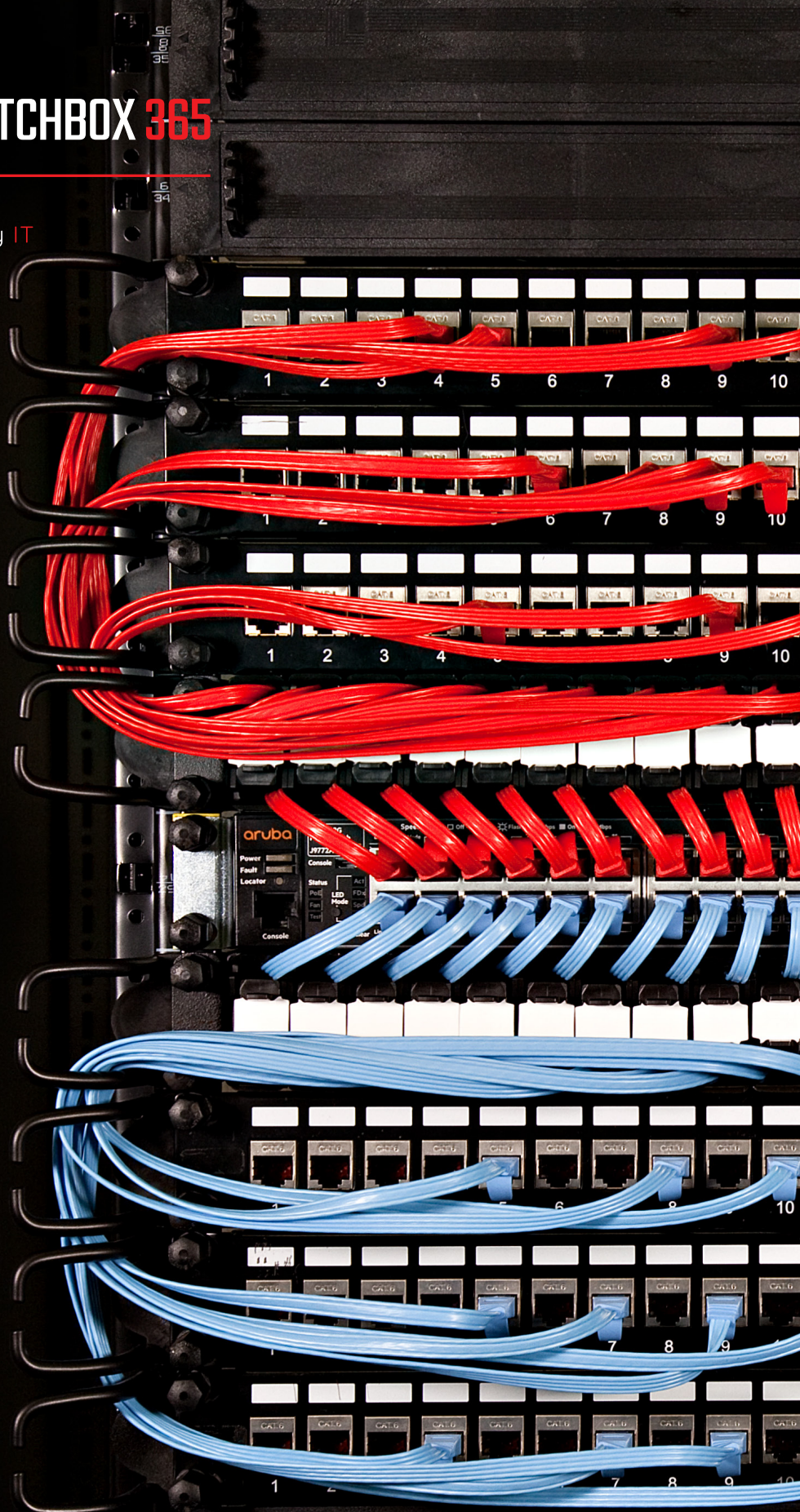
Stows Excess Patch Cords Automatically



Integrated Documentation & Labeling Solution



5 Year Manufacturer Warranty



Find your regional PATCHBOX Official Reseller at patchbox.com/reseller or email mail@patchbox.com

The PATCHBOX solution - Simplify Cable Management

The PATCHBOX is the state-of-the-art cabling system for network racks that replaces conventional patch cords and cable management. Providing the exact length patch cord required, creating benefits by accelerating rack maintenance and building an efficient and sustainable working environment by preventing cable spaghetti.



LOGIC

Achieve the impossible! A visual overview of a cabinet, always recognize what's connected and what isn't.

10X FASTER MAINTENANCE

Using the PATCHBOX solution productivity is increased and with superior accuracy.

STAYS NEAT

The spring loaded system retracts any excess patch cable and stows it safely within the PATCHBOX cassettes.

FLUKE CERTIFIED

Every cassette cable both fibre and copper are tested to ISO/IEC 11801 Class E standards.

SPACE SAVER & CORD KEEPER

Patch cords always ready when you need them and at a higher density compared to conventional methods.

MODULAR CASSETTES SYSTEM

PATCHBOX Cassettes available in Cat. 6 Cassettes (UTP / STP) Fiber optic Cassettes (OS2 / OM4)

PATCHBOX CASSETTE COLORS

Cassettes for both the PATCHBOX Plus+ and PATCHBOX 365 are available in eight colors; black, white, red, green, blue, yellow, violet and grey.



Fastest troubleshooting ever with the PATCHBOX solution

With PATCHBOX you can achieve the impossible: a forever clean and neat network rack. Save money with faster troubleshooting, maintenance and restructuring messy network racks. PATCHBOX even brings logic to your network rack so you can replace a faulty network switch in 3 minutes. Say goodbye to expensive switches with redundant power supplies and get a PATCHBOX instead.

| | PATCHBOX 365 | PATCHBOX Plus+ | PATCHBOX Long Range | Conventional Cable management* |
|---------------------------------------|--------------|----------------|----------------------|--------------------------------|
| Unit depth | 365 | 600 | 600 | NA |
| Cable length | 0.8m | 1.7m | 1.7m + 1m overlength | Cable spaghetti! |
| Modular flexibility: Cat. 6, OM4, OS2 | ✓ | ✓ | ✓ | ✗ |
| Remains organized & structured | ✓ | ✓ | ✓ | ✗ |
| Cable routing & patching solution | ✓ | ✓ | ✓ | ✗ |
| 5 year manufacturer warranty | ✓ | ✓ | ✓ | ✗ |
| Quick cable tracing solution | ✓ | ✓ | ✓ | ✗ |
| Fast troubleshooting | ✓ | ✓ | ✓ | ✗ |
| Integrated labeling & documentation | ✓ | ✓ | ✓ | ✗ |
| Manufacturer Support | ✓ | ✓ | ✓ | ✗ |

*Compared to conventional cable management / no cable management system.

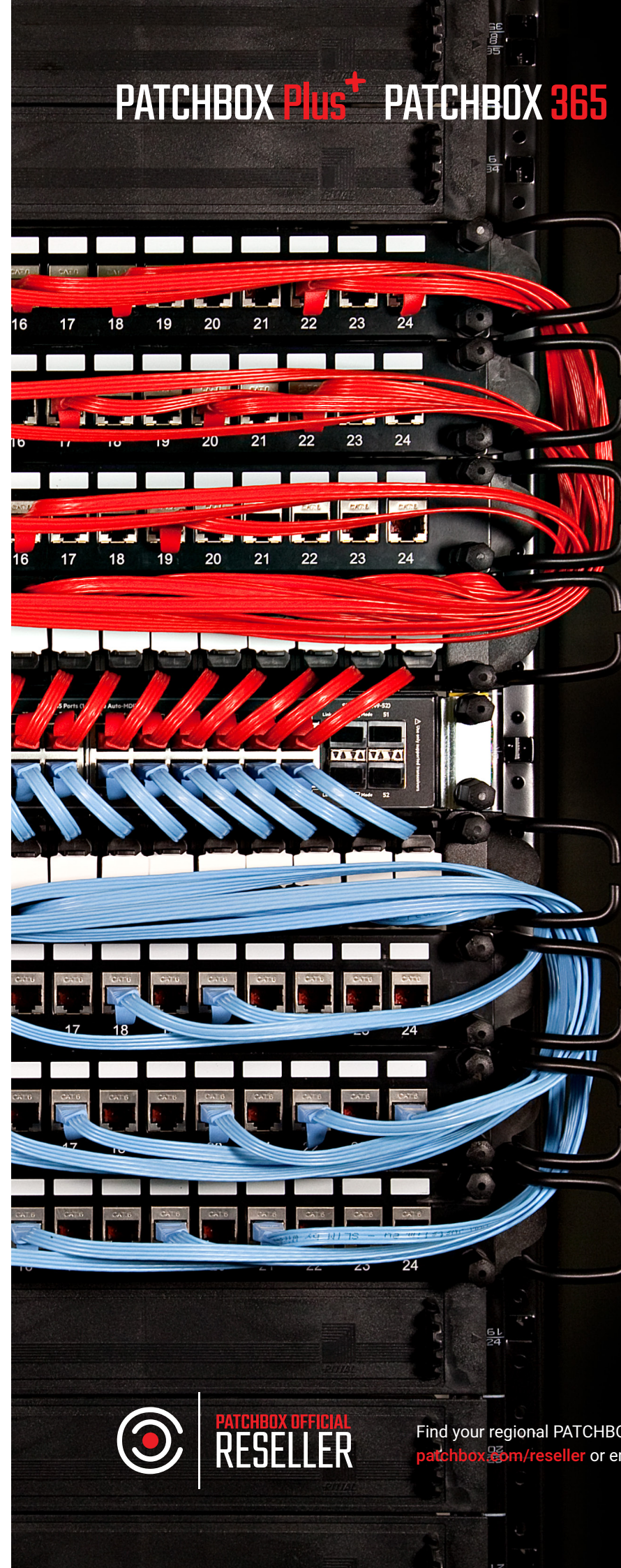
Everything included and customized to your specification

Order your PATCHBOX pre-assembled to your specific requirements with our PATCHBOX Custom. Pre-assembled PATCHBOX Plus+ and PATCHBOX 365 are available on request. Email us at mail@patchbox.com for further details.



5 year manufacturer's warranty on the PATCHBOX Plus+ and PATCHBOX 365

We believe in quality. The springs we use in our cassettes are built to last millions of pulling cycles. The cassette profiles are made of CroMo Steel. The connectors on the patch cords we use have extra thick gold plating to guarantee as many mating cycles as possible. We also source locally whenever possible to have a close relationship with our suppliers. We provide a 5 year warranty on all production related issues on both our PATCHBOX Plus+ and PATCHBOX 365 which is why 1000+ companies trust in the PATCHBOX.



5
YEAR

WARRANTY

PATCHBOX provides a 5 year warranty on our PATCHBOX Plus+ and PATCHBOX 365.

See the patchbox in 3D and at 360°
patchbox.com/patchbox

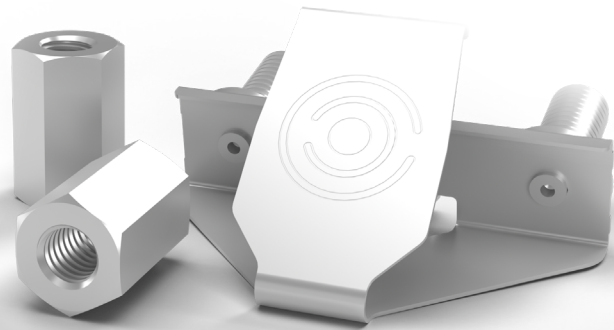


**PATCHBOX OFFICIAL
RESELLER**

Find your regional PATCHBOX Official Reseller at
patchbox.com/reseller or email mail@patchbox.com

/dev/mount

PATCHBOX Simplify IT



HOLDS EQUIPMENT SECURELY

Constructed from spring steel and aluminium the /dev/mount is the ideal tool for mounting equipment into 19" racks at superior speed.

QUICK MOUNTING & RELEASE SYSTEM

The /dev/mount increases speed and accuracy of hardware mounting / dismounting.

DUAL-SIDED / REVERSIBLE HEX-NUTS INCLUDED

The included HEX-nuts can be tightened without tools making the process completely toolless.

ZERO PRIOR ASSEMBLY REQUIRED

The /dev/mount requires zero assembly prior install and snaps securely in position.

MADE IN GERMANY

Doing more with fewer parts the /dev/mount is durable, affordable and designed to last

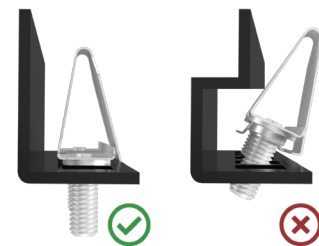
It is very common for conventional cage nuts to have sharp, unsafe serrated edges which can be painful and cause cuts. The /dev/mount has been designed with practicality, safety and ease of handling in mind safeguarding the working environment. The /dev/mount is not only faster at completing tasks but also safer.

See the /dev/mount in 3D and at 360° at patchbox.com/devmount

The /dev/mount is the fastest solution replacing conventional cage nuts used in server and network racks. Its faster mounting capabilities increases productivity of mounting 19" equipment. The /dev/mount holds equipment securely in place before the nuts are fastened, making hardware mounting a faster and more secure task.

Completely effortlessly requiring zero prior assembly as well its quick mounting & quick-release functionality the /dev/mount significantly increases productivity of mounting hardware into network and server racks. Doing more with fewer parts the /dev/mount is durable, affordable and designed to last. Conventional cage nuts consist of many individual parts and are therefore difficult to handle and install. The /dev/mount requires zero assembly prior install and snaps securely in position. Only half the parts are required to mount any 1RU 19" equipment, compared to cage nuts.

Compatibility with 19" rails: The /dev/mount is compatible with 19" rails with square punched holes that are capable of installing standard server rails.



Find your regional PATCHBOX Official Reseller at patchbox.com/reseller or email mail@patchbox.com

Network with Confidence

LIFE TIME WARRANTY

SETUP.EXE

PATCHBOX Simplify IT



The Setup.exe enables one technician to do the job of two. The Setup.exe secures the weight of equipment, such as switches, in server and network racks until they are securely screwed in. Mounted facing inside out of a rack the Setup.exe creates the ideal workspace to place a laptop or diagnostic tools during configuration or terminating a patch panel. Find out more and see the Setup.exe 3D and at 360° visit patchbox.com/setup-exe

YOUR IRREPLACEABLE THIRD HAND

The Setup.exe becomes your valuable third hand. No more acts of balancing expensive equipment with one hand while trying to get the screws in with the other.

MOBILE WORKSPACE

Easily configure Switches, Servers etc. with two hands while the Setup.exe holds your Laptop or diagnostic tools for you.

YOUR TOOLS WITH YOU ALWAYS

Hold spare cage nuts and IT technicians every-day-tools so you always have them with you.

LIFETIME WARRANTY

Quality and innovation are both of highest priority at PATCHBOX you'll only ever need one Setup.exe.

MOUNTED IN SECONDS

The Setup.exe comes with two spring loaded bolt plungers that safely secure the Setup.exe in place.

ADJUSTABLE & COMPATIBLE

The Setup.exe fit all 19" racks with square punched holes.



Find your regional PATCHBOX Official Reseller at patchbox.com/reseller or email mail@patchbox.com