

ICY BOX IB-247-C31

USB 3.1 Type-C™ (Gen 2) enclosure for 2.5" SATA drives

Key features

- External Type-C™ enclosure for 2.5" SATA III drives
- Enclosure made of high-grade aluminium
- Connection to hostcomputer: USB 3.1 Type-C™ (Gen 2) up to 10 Gbit/s
- Supports SATA III transfer rates up to 6 Gbit/s
- HDD height up to 9.5 mm, capacity unlimited
- USB cable: Type-C™ to Type-C™, length 60 cm



Packing content

1x IB-247-C31, 1x USB Type-C™ cable, 1x screwdriver, 1x rubber feet, 1x manual, drives not included

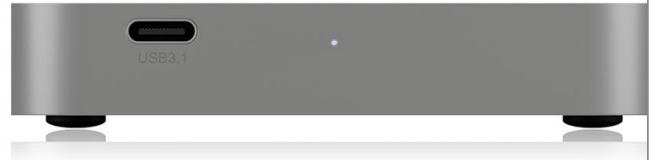
15 square inch pure speed

The enclosure provides 2.5" drives with an environment in which they can fully exploit their transfer rates. Thanks to the USB 3.1 (Gen 2) Type-C™ connection, data is transferred from A to B with the maximum transfer rate specified by SATA III of 6 Gbit/s.

Technical data

Model	IB-247-C31
Article no.	60426
EAN code	4250078168126
Brand	ICY BOX
Colour	Anthracite
Material	Aluminium
Interface to host computer	USB 3.1 (Gen2) Type-C™
HDD size	2.5"
HDD height	Up to 9.5 mm
HDD interface	SATA I,II,III (6 Gbit/s)
HDD capacity	Unlimited

Transfer rate	Up to 10 Gbit/s
Plug & Play	Yes
LED	Power and access
Chipset	VL716
Power supply	USB powered
Operating system	Windows®, macOS®
System requirements	At least one free USB Type-C™ port is required. The IB-247-C31 also works with computers and notebooks with USB 3.0/2.0/1.1 Type-A interfaces as long as the appropriate adapter is available. The full USB 3.1 (Gen2) transfer rate can only be achieved with a USB 3.1 (Gen2) Type-C™ interface.

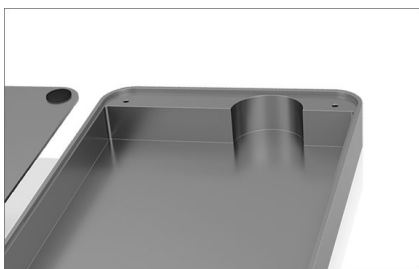


ICY BOX **IB-247-C31** USB 3.1 Type-C™ (Gen 2) enclosure for 2.5" SATA drives



AL - our favourite element from the periodic table

Aluminium - the material our accessory dreams are made of. Developed on the computer, melted in the blast furnace and finally milled from one piece of aluminium with the highest precision. More quality cannot be developed from a hard disk enclosure.



Fast pit stop

Cover up - remove drive, insert new drive, cover down - done. The CNC milled recess in the aluminium means that the exchange of hard disks and SSDs is no longer a nerve tear fest.



Are we there yet?

The copying of a huge amount of data is pending and nobody wants to devote their undivided attention to the copying process. The integrated LED shows us in stylish blue whether hard disk access and therefore the copying process is still taking place - so that you can concentrate on the important things.

Logistical data

Packing unit:	X pcs./carton
Total weight:	X kg/carton
Gross weight: (with packing):	X kg
Net weight:	X kg

Dimension/carton:	XX mm
Dimension (with packing):	XX mm
Dimension of article:	XX mm
Country of origin:	China

